

COUNTY OF SANTA FE)
STATE OF NEW MEXICO) ss

BCC MINUTES
PAGES: 71

I Hereby Certify That This Instrument Was Filed for
Record On The 1ST Day Of August, 2012 at 02:31:40 PM
And Was Duly Recorded as Instrument # **1676949**
Of The Records Of Santa Fe County

Deputy _____
Witness My Hand And Seal Of Office
Valerie Espinoza
County Clerk, Santa Fe, NM

SANTA FE COUNTY
BOARD OF COUNTY COMMISSIONERS
REGULAR MEETING

June 26, 2012

- Liz Stefanics, Chair – District 5
- Kathy Holian, Vice Chair – District 4
- Robert Anaya – District 3
- Danny Mayfield – District 1
- Virginia Vigil – District 2

SFC CLERK RECORDED 08/01/2012

SANTA FE COUNTY

REGULAR MEETING

BOARD OF COUNTY COMMISSIONERS

June 26, 2012

This regular meeting of the Santa Fe Board of County Commissioners was called to order at approximately 1:00 p.m. by Chair Liz Stefanics, in the Santa Fe County Commission Chambers, Santa Fe, New Mexico.

Employees of the Assessor's Office, Anita Lucero and Gloria Vigil led the Pledge of Allegiance and State Pledge, following roll call by County Clerk Valerie Espinoza and indicated the presence of a quorum as follows:

Members Present:

- Commissioner Liz Stefanics, Chair
- Commissioner Kathy Holian, Vice Chair
- Commissioner Robert Anaya
- Commissioner Danny Mayfield [telephonically]
- Commissioner Virginia Vigil

Members Excused:

[None]

V. Moment of Reflection

The moment of reflection was led by Herb Gerstner.

VI. Approval of the Agenda

- A. Amendments**
- B. Tabled or Withdrawn Items**

CHAIR STEFANICS: Ms. Miller, do we have all the changes or was there one other section we were moving?

KATHERINE MILLER (County Manager): Madam Chair, there's a couple of amendments or changes. The first amendment is under item IX. Presentations and Proclamations. We added item D, the presentation of an award. Then we would also request that under item XI. Staff and Elected Officials' Items, that we move items D. 1 through 4, that's the Human Resources Department, if we could move those to the beginning in front of

the Administrative Services Department. We do have members here from the bargaining unit, so if we could move those up they can not have to stay here throughout the meeting.

And then the final item is at the end under Matters from the Commission, item XVI.

B. 1 has been withdrawn.

CHAIR STEFANICS: Thank you. Other – Commissioner Anaya.

COMMISSIONER ANAYA: Madam Chair, I wanted to see if we could move the item XV. A. 3 to after the presentations.

CHAIR STEFANICS: Well, Commissioner, I'm going to wait until we get through the bargaining unit so they can get back to work.

COMMISSIONER ANAYA: Madam Chair, after the bargaining unit, that would be fine.

CHAIR STEFANICS: Is that acceptable to everybody else?

COMMISSIONER VIGIL: Where is the bargaining unit, Madam Chair?

CHAIR STEFANICS: Okay, the bargaining unit was XI. D and now it's become XI. A, so that they can speak and then go back to work.

COMMISSIONER VIGIL: Okay. So we will be going through presentations and proclamations preliminarily and the Consent Calendar.

CHAIR STEFANICS: Yes. And then we'll move XV. A. 3 after the bargaining unit, is what I hear the request.

COMMISSIONER ANAYA: Move for approval as amended, Madam Chair.

COMMISSIONER MAYFIELD: Second, Madam Chair.

The motion passed by unanimous [5-0] voice vote.

VII. Approval of Minutes

A. Approval of May 15, 2012 Budget Study Session Minutes

COMMISSIONER HOLIAN: Madam Chair, I move for approval of the May 15, 2012 budget study session minutes.

COMMISSIONER VIGIL: Second.

CHAIR STEFANICS: There's a motion and a second.

The motion passed by unanimous [5-0] voice vote.

VIII. Approval of Consent Calendar

CHAIR STEFANICS: Okay, we are now at the approval of the Consent Calendar, which is VIII. What's the pleasure of the Commission?

COMMISSIONER VIGIL: I move to approve.

COMMISSIONER HOLIAN: Second.

MS. MILLER: Madam Chair, there is one resolution. You might want to request public comment if there is any.

CHAIR STEFANICS: That's a good point. Is there anybody in the audience who is here to comment on X. B, Resolution No. 2012-77, which is a resolution authorizing the disposal of personal property in accordance with state statutes? Seeing no public comment, there is a motion for approval of the Consent and there was a second?

COMMISSIONER HOLIAN: Yes.

The motion passed by unanimous [5-0] voice vote.

X. Consent Calendar

A. Appointments/Reappointments

1. **Accept Resignation of Antoinette Montano as Member of the Santa Fe County Health Policy and Planning Commission (Community Services Department/Health and Human Services)**
2. **Accept the Removal of Juan Blea as Member of the Santa Fe County DWI Planning Council (Community Services Department/Health and Human Services/DWI)**
3. **Appoint Donna M. Bevacqua-Young to the Santa Fe County DWI Planning Council (Community Services Department/Health and Human Services/DWI)**
4. **Appoint Reena Szczepanski to the Santa Fe County Health Policy and Planning Commission to Represent City of Santa Fe. (Community Services Department/Health and Human Services)**
5. **Appoint Charlie C de Baca to the La Cienega Community Center Advisory (Community Service Department/Health and Human Services)**

B. Resolutions

1. **Resolution No. 2012-77, a Resolution Authorizing the Disposal of Personal Property in Accordance with State Statutes (Finance Division/Teresa Martinez)**

IX. Presentations/Proclamations

- A. In recognition of Dodi Salazar, Executive Director of the Santa Fe County Housing Authority, for Her Retirement After 25 ½ Years of Dedicated Service**

JOSEPH GUTIERREZ (Community Services Director): Madam Chair, members of the Commission, I think there's a little presentation that's going to run simultaneously. I've had the pleasure of working with Dodi for the last five years and she is clearly someone who is very passionate about what she does, someone who truly impacts so many people in a positive, life-changing way. Dodi has spent her whole career in housing, has always given 110 percent, and many, many times put her job first.

Under her leadership Santa Fe County Housing Authority has brought several different housing programs, has become an example of managing special housing programs throughout the state, setting the bar for best practices and responsible and efficient program management. She is a key part of network people in diverse occupations. Dodi strives to maintain the quality and appearance of all three of the housing sites and they had the cleanup days as an example. She is adamant that customer service be incorporated into every daily staff function interaction with the residents and the public.

Dodi has never lost sight of the clients and housing that she serves. Her work ethic, professionalism, passion are always very valuable assets that reflect positively in Santa Fe County. I want to thank Dodi for her dedication and commitment to the Housing Authority, and at this point I want to introduce Valerie Huerta, Housing Self Sufficiency Specialist, who is going to speak from the staff perspective. Thank you, Commissioners. I also have a certificate her for Dodi that came from the Commission.

CHAIR STEFANICS: Great. So let's hear the speakers and then we'll come down and congratulate Dodi on all of her hard work.

VALERIE HUERTA (Housing Department): Thank you, Joseph. Madam Chair, County Commissioners, as Joseph mentioned, I'm Valerie with the Santa Fe County Housing Authority. I am honored to be here today to present this to Dodi and to recognize her for her years of service. George Wilhelm once said, "Nothing great in the world has been accomplished without passion. This quote exemplifies the career of one very special individual and reminds us that in order for people to be truly successful in life there must be some form of passion to drive them.

Dodi Salazar has enough passion to drive us all. Her passion for housing started with assisting participants and took her to directing the Santa Fe County Housing Authority. Her dedication to the Housing Authority is distinguished by her years of service, the expansion of housing programs during her tenure, and her vision for providing decent safe and sanitary housing opportunities to everyone in need. Before Dodi worked in public housing she lived in public housing and learned first-hand the issues and concerns of residents and their families.

In 1986 Dodi began the start of her housing career as the front desk person. At that time the Housing Authority employed a small staff of three. Dodi's responsibilities included everything from answering phones, taking rent payments, processing applications, managing the wait list, case manager for public housing, case manager for certificate and housing [inaudible] program, and assisting with the day-to-day housing operations. She has held many positions which include supervisor, capital fund program coordinator, case manager, accountant, [inaudible] inspector and served as deputy and executive director, and has acquired many certifications, including Housing Choice Specialist, [inaudible] inspector, Family Self-Sufficiency Specialist, Public Housing Manager, just to name a few.

Dodi's passion for housing has characterized her career in a very special way. She has spent her whole 25 ½ years to increase housing opportunities for the same housing authority. In 1992 Dodi applied for and received grant funding for the housing choice voucher family self-sufficiency program. Soon after, the Housing Authority also began managing an FSS public housing program. The FSS program is one of Dodi's great loves. She enrolled many

participants, collaborated with a variety of community resources and provided numerous monthly trainings.

One of her proudest professional and personal moments was in 2001 when she presented a check for \$27,000 to a graduate in housing FSS participant. Her dedication to her programs and her participants inspired that graduate to purchase her own home. During her career Dodi was also responsible for the implementation of the Housing Choice Voucher Homeownership program and was involved in the implementation of the 5-H homeownership program. Under her leadership the Housing Authority has also managed an affordable housing program for low income individuals.

More recently, she has added foreclosure assistance to her repertoire of programs. These programs have provided many participants with the opportunity to purchase and stay in their homes for years to come. Over the years the need for housing has increased. Her ambition to ensure that housing opportunities are readily available has impacted members of our community immensely. In 2007 she applied for and received funding for a supportive housing program Linkages program. The Linkages program is a state-supported housing program for individuals with behavioral health disabilities who are homeless or precariously housed. The success of managing this program encouraged Dodi to apply for additional programs.

Currently, the Housing Authority manages 200 public housing units, 241 housing choice vouchers, the housing choice voucher homeownership program, a foreclosure prevention program, public housing and housing choice voucher FSS programs, two supportive housing programs for individuals with behavioral health disabilities and a supportive housing voucher program specifically for veterans. She continuously sought programs to assist in meeting the demands of the population we serve.

Dodi maintained an unwavering vision throughout her career to provide decent, safe and sanitary housing to all in need. She was a board member, board president and active in the New Mexico chapter of the National Association of Housing and Redevelopment Officials, NAHRO, Southwest NAHRO, and National NAHRO for most of her career. She has staffed numerous boards throughout the community, including Habitat for Humanity, the Coalition to End Homelessness, the Citizen Review Board, Boys and Girls Club and Santa Maria Pastoral Council. She has also been an advocate for housing issues during the legislative session.

Dodi's fervor is felt and seen when she talks about housing. Her passion for housing is evident in the rising of many people she has assisted over the years that are now self-sufficient and have the pride of homeownership. Her encouragement toward self-sufficient and successful life has not only impact participants but also her staff. Her mix of understanding and outgoing personality provides an atmosphere that encourages her staff to have the same passion, thirst for the same knowledge and opportunity to carry out her vision and success. Dodi's drive extends from the front desk to the executive director's desk. More importantly, it impacted those who have been fortunate enough to benefit from her services, touched the lives of many residents and their families and the lives of the Santa Fe County community. Her career may have come to an end but her advocacy and her dedication to

2012/06/26 09:00 AM REC'D 025

work in our housing programs will continue. She takes with her the friendship and memories of a great career and leaves behind the hope that we will continue her great passion.

CHAIR STEFANICS: Thank you very much. Is there anybody else who would like to make some comments before we go to the Commission and the formal recognition and bringing Dodi up. I would like to acknowledge Commissioner Harry Montoya who joined us today. We thank you very much Commissioner. Do you have anything you'd like to say about Dodi and her retirement? I don't think you can recruit her to come to work because she has retired.

HARRY MONTOYA: Can we change her mind? Madam Chair, members of the Commission, I just want to congratulate Dodi. During the tenure while I was here on the Commission it was definitely a pleasure to go to the Housing Committee meetings and find out the latest of what was going on, knowing that she was doing an excellent job, a great job. She will be missed by you all on the Housing Commission and also the residents that she served. So congratulations and all the best and have a safe retirement.

CHAIR STEFANICS: Thank you very much for joining us today, Commissioner. Ms. Salazar, would you like to step up to the podium and while you're under control would you like to say anything?

DODI SALAZAR: Oh, yes. Madam Chair, Commissioners, it's so weird to be up here for the last time as a County employee. Usually I come up here and I have my notes and I'm always prepared, and this time I really wanted to speak from my heart, so I'm going to do that.

First thing I want to do is I really want to thank Joseph Gutierrez. Joseph, you have been an amazing, amazing leader and a boss, a confidant and a really good friend. And I am going to miss you so much, and I have enjoyed working with you and I wish you the best of luck. So thank you for that.

I've been truly, truly blessed in my life. I have the most amazing family. You all met my husband. He's always had my back and been there for me and everything. I've told you how amazing – I've been blessed. I have good friends, a lot them who are here today and I have a job that I absolutely love. And I always loved my job, from the first day that I stepped into that office and on Friday when I leave that office I will still feel the same way.

I also had the opportunity to work with the most amazing staff. I can't even say enough about my staff. My staff, I have always said is the County's best kept secret. These individuals are all leaders in their own right. They are experts in their fields. They work crazy hours. It's not unusual to walk in my office during the lunch hour and everybody's work. And it's not unusual to go by my office about 6:00 and you'll still see a few people working, because I truly believe that your employees will do what they see you do. So I've always been very, very proud of that.

We're like a family over at the Housing Authority. I know that sounds like such a cliché but we've been there for each other through so many things. We've seen each other through marriages and divorces and in some cases our second marriages and divorces. We've been there through the birth of our children, the birth of our grandchildren, the death of our parents, the death of some of our brothers and sisters and in some cases the death of our own children. And if that isn't a family I don't know what is.

So that being said I really want to thank Katherine and Steve Ross, Rachel, Bernadette and Teresa, because without all you supporting the Housing Authority we would not have been as successful as we were. I want to thank the Commission for your leadership, your guidance and your support. After all these years I wish you all the very, very best of luck. Thank you.

CHAIR STEFANICS: Thank you very much. Comments, Commissioners?
Commissioner Holian.

COMMISSIONER HOLIAN: Thank you, Madam Chair. Dodi, I think you were the first or almost one of the first of the staff, the County staff whom I met after I came on board, probably because you're so friendly and outgoing. But also it was a really good thing. I knew very little about public housing when I started in this job and I had a very steep learning curve and you've helped me learn a lot over the years and I really, truly want to thank you for that and for what you've give to me. I think that you are a wonderful, caring person. You've been caring about your own staff, of course. That's why it's such a great department, and caring about the people who live in public housing, and I think that really shows. I think that we have one of the best housing departments, if not in the state then probably the entire country and I think a lot of that is due to your leadership.

So I want to just wish you congratulations and wish you the best in your retirement, and I'm really hoping that you're not going to forget about the County but you're going to come back in some way or another in the future.

MS. SALAZAR: I probably will.

CHAIR STEFANICS: Thank you. Commissioner Anaya, then Commissioner Vigil.

COMMISSIONER ANAYA: Thank you, Madam Chair. Dodi, you've done a good job at the Housing Authority. 25 ½ years is a long time committed to one place. Never left. You wanted to stay at Santa Fe County and you dedicated many, many years, not just to the Santa Fe County Housing Authority but to other entities around the state of New Mexico, through New Mexico NAHRO and through Southwest NAHRO and National NAHRO. As you heard, I made comments earlier about the tough times that you had associated with the County at one time wanting to do away with the Housing Authority. You, along with many other people at the agency were subject to a lot of scrutiny but you stuck in through thick and thin. You hung in there; you stayed with it along with the staff. I congratulate you on all your years of service. Thank you for your years of service and wish you the best of luck. And I don't know if you have the list of things for Jim to do or Jim has the list of things for you to do, but he's got them all up there, he says, but good luck to you and your family as you go forward and retirement.

MS. SALAZAR: Thank you, Commissioner. Besides, Jim doesn't do anything I tell him to do. Nothing.

CHAIR STEFANICS: Commissioner Vigil. You're going to have to work on that one.

COMMISSIONER VIGIL: Dodi, we go way back. As a matter of fact I have these visuals of when I first met you and I was a legal policy advisory with Santa Fe County. I think we were at a senior staff meeting, you, I and maybe one other. Katherine as Finance.

There were three of us in there who were females who were in sort of decision making or support systems so it was really nice to know that you were a part of that. That visual, I go way back. I had no idea that you were also living in housing. Wow. How profound is that and how does that address the issues that you've been able to do. That explains so much to me.

Because I'm looking at the values that I see you've brought to your job. It's honesty, it's integrity. It's about being fair, treating people equitably, making decisions in the best interest of everyone. And I think with that, if there's any value that I think you really scored high in it's in loyalty. Loyalty to your employees, loyalty to your job, loyalty to your purpose and your mission. That is probably the most significant value that I will always remember you by. And whatever you decide to do, when you go and leave the County, don't ever forget that. You're a highly skilled person. The position you had was critical to Santa Fe County. You were a negotiator. Gosh. I'm thinking of some of the programs. When Valerie mentioned them I thought one of them that really impressed not only me but a lot of other housing authorities was the scholarship program that you provided for a student in our housing. What a huge thing that was. And all of that outside thinking of the box continues because as you remember our meeting this morning, it's really about connecting folks about what would be available to them to support them to improve and enhance their capability to become effective civic engaged folks in our community.

You have that loyalty, to your community, to your job and to the people that you serve. Thank you so much for all you've done. You are highly appreciated.

MS. SALAZAR: Thank you, Commissioner.

CHAIR STEFANICS: Thank you, Commissioner. Commissioner Mayfield.

COMMISSIONER MAYFIELD: Thank you, Madam Chair. I'm sorry I'm not there in person but I just want to thank you for all you've done for me and with me in working with the Housing Authority. You've been an asset to the County. You definitely will be missed by the community and your staff. What you all do with the wishing tree here at Christmas time is just phenomenal and I'm sure you were in the middle of that happening. Again, Dodi, I wish you the very best, much success in your future, and do not be a stranger, please.

MS. SALAZAR: Thank you, Commissioner Mayfield.

CHAIR STEFANICS: Thank you. And Dodi, in the past four years that I've worked with you here's what I would like to comment on. I've seen your caring for residents, your caring for your staff, and caring for good policy. And that when we would discuss and fight or finesse the policy you'd come back with an even better policy and I truly appreciate that. You've been a negotiator and you've been very flexible. It's not easy responding to two or three staff bosses and five elected bosses. So thank you very much for all that. And thank you for your participation on the state and national level representing Santa Fe County.

If we could all stand for a recognition of Ms. Dodi Salazar. Dodi, we're going to come down to congratulate you and then afterwards I'd like for you and your entire staff to come up for pictures.

[Photographs were taken.]

SFC CLERK RECORDED BY 1/2/12

MS. MILLER: Dodi, I've had the great pleasure of working with you in several capacities, and as Commissioner Anaya mentioned, back several years ago when the Housing Authority was in troubled status it was a great honor to work with you. We got Finance to work through all of those issues to make sure that the Housing Authority stayed. And then I had the pleasure of being the MFA Director and seeing Santa Fe County as one of the best housing authorities in the state of New Mexico. And then it was a bonus to come back to Santa Fe County and have you as the director and I knew I wasn't going to have to worry about you and your staff making sure that everything was as it needed to be, particularly all the HUD programs, all the programs you had to administer, all the requirements from the feds, and all the state and local requirements. You do an excellent job. You've been a wonderful example of a dedicated County employee and somebody who loves what they do, loves the residents, and as everyone has said, so passionate about it. You will be greatly missed. I'm sorry I wasn't able to talk you into an extra six months.

I hope you have a wonderful retirement and you'll be missed greatly. I hope you come and visit us, particularly at Christmas. Everyone will miss your participation in the Christmas program. So thank you, Dodi.

CHAIR STEFANICS: Thank you again, Dodi, and thank you to all of the staff and friends and family who came today. Thank you.

IX. B. Recognition for Gabriella Trujillo and Lorina Sanchez for Completing the Santa Fe County College for Working Adults Program and Obtaining Their Associates Degree in Accounting

GIGI GONZALES (HR Department): Good afternoon, Madam Chair, Commissioners. First of all, I'd like to congratulate Dodi also. I happened to be one of that small staff at Housing when Dodi was hired in 1986 so it was just two of us.

Okay. The Santa Fe County College for Working Adults program was implemented in the fall of 2007. This is a very unique program for adults who have full-time work and/or family responsibilities. The curriculum was developed specifically for busy adults, where students could earn an associate in just 2 ½ years while working full time.

Santa Fe County College provided the County payroll office with flyers and I conducted several sessions where I was able to explain this program to our employees. All employees interested were required to fill out an application along with an essay saying why they wanted to be involved in the program. They also were required to be off of probation and were not allowed any disciplinary action in their personnel files.

A little bit about the program. It was a 2 ½ year program where employees could attain their associates degree in business administration. The program consisted of eight 10-week blocks with approximately nine credit hours per block. This consisted of four hours in classroom, one online course, and one full Saturday approximately every other Saturday from 8:00 to 5:00. So it took a lot for the employees also.

With County educational league at this point, which was four hours per week per employee, each employee enrolled in CWA contributed 1 ½ hours plus one full Saturday every week. The program began with 18 employees and has now graduated seven with their

associates in business administration. Two of these employees have now attained their second associates in accounting.

The second CWA group began in August 2009 and graduated in the spring of 2011 with their associates in business administration. We now have two of them who have completed the curriculum and have not received the degrees yet but that will be coming at the July 31st meeting. At this time I would like to introduce Adam Leigland who is our Public Works Director and will be presenting a certificate to these two of these employees, Gabriella Trujillo and Lorina Sanchez. Thank you.

CHAIR STEFANICS: Thank you. Mr. Leigland.

ADAM LEIGLAND (Public Works Director): Commissioners, as you know, we've been working hard to improve the capital improvement program. You also know we work hard throughout the county, maintaining roads, taking care of solid waste, maintaining County utilities. But behind that high visibility important work is where the real work happens and that is our administrative section. And so I'm really pleased to stand here today to present these certificates to probably two of the biggest stars in the Public Works Department. It's very rare that they get any kind of a recognition, and as you just heard, not only do they work hard for me in their duties at the County but they work very hard in their professional development.

And so I don't want to spend too much time. I want them to have the opportunity to speak, but I have two certificates here that I'd like the Commission to present on their behalf, so I'd like to have Gabby and Lorina come up.

GABRIELLA TRUJILLO (Public Works): Madam Chair, Commissioners, I would just like to thank all of you for the opportunity to continue my education, and I'd also like to thank the Human Resources Office and Adam and Robert and anybody who puts this program together. It's a very good program. But I probably would not have been able to continue my education if it wasn't around. I was able to do it. I have two small children and I was able to continue my education and I hope to keep going from there. Thank you.

CHAIR STEFANICS: Thank you so much.

LORINA SANCHEZ (Public Works Department): Madam Chair, Commissioners, Manager Katherine, Adam and Robert Martinez, I would like to thank all of you once again for this opportunity to get our second degree, associates, and I also wanted to comment on Dodi. I just wanted to thank her. She is really a giving person. And with that said, I also want to thank you for being so giving with this program. It is such a wonderful opportunity for the employees here in Santa Fe County and I just wanted to encourage more of the employees to follow through with this and join in and get their careers going. Thank you very much.

CHAIR STEFANICS: Thank you. We're going to come down. Let's take comments from the Commissioners. Commissioner Vigil.

COMMISSIONER VIGIL: Gosh, Gabrielle and Lorina, it's really you that need to be thanked, you providing the role model for Santa Fe County employees to further themselves in the way they have. I'm sure it hasn't been easy. There's probably a lot that you've had to balance in your life to make this happen, but ultimately, to have a goal of educating yourself for your benefit, for the benefit of your family and enriching for the

SFC CLERK - RECORDED 58/61/2012
7/18/12/08 02:00:00 PM

County. I do hope more County employees take advantage of this opportunity. Thank you for doing it.

CHAIR STEFANICS: Thank you. Commissioner Anaya.

COMMISSIONER ANAYA: You two, and all of those that came before you and those that will come after are very valuable to us. I appreciate the dedication of setting aside, as it was set earlier, other things, and working through the tough management of working and going to school and family and everything else that goes along with it. But I appreciate you very much. You're the assets our employees and volunteers and I will continue to fight for you. I know my fellow Commissioners will and I always wait for Gigi to come and say we need more money and we'll gladly look to provide more resources as we need them as we help provide training and education to the employees. Thank you very much.

CHAIR STEFANICS: Thank you, Commissioner. Commissioner Holian.

COMMISSIONER HOLIAN: Thank you, Madam Chair. I would just like to add my voice in congratulations to you, Gabriella and you, Lorina, for your accomplishment. I know it must have been a lot of hard work to get to where you have come. But I know that it's been a huge asset to our County and it will be a huge asset to your own life in being able to move forward. Anyway I'm very proud that the County offers a program like this and so I think that we should make it available to as many people as who would like to join in with this program. But again, congratulations and thank you.

CHAIR STEFANICS: Thank you. Commissioner Mayfield.

COMMISSIONER MAYFIELD: Madam Chair, thank you. I would also want to compliment you and thank you for what you've achieved. I'm very honored to be working alongside of you and best of luck with everything you do with these degrees and hopefully you'll apply for more promotions here at Santa Fe County with these degrees. Thank you.

CHAIR STEFANICS: Thank you. I am a great promoter of education, whether it's through conferences, workshops, college degrees, and the fact that you took so much time out of your lives, besides working full time, having families and putting this on a top burner. Bless your families for supporting you and bless you for making the sacrifice. I hope it makes your life better as you continue to grow professionally. Thank you so much. We're going to come down to congratulate you and we'll take photos. Let's give them all a round of applause please.

[Photos were taken.]

IX. C. Proclamation in Support of the Efforts of the Schooltime "Duds" Community Group

COMMISSIONER VIGIL: Thank you, Madam Chair. I'm very honored to do this presentation and I'm going to ask Karen Webb to come to the front on this if you wouldn't mind. While she's coming, let me just tell you that Karen is an old hippy from Jersey. She's been a waitress at Plaza Café for 17 years. She talks about that experience by saying it's my life, it's my style, it's my only talent. She's become iconic. When the *New Mexican* described her they described her as a saucy waitress. Her response is all paths lead

2012/06/26 09:00:00 AM

SFC CLERK RECORDED 88/01/2012

to God. Webb, from the Plaza Café, said she's enlisting help from all sides to ensure a speedy recovery from recent back surgery. It's wonderful to see you walking.

The Plaza Café commented they've been unusually quiet since she's been gone. You waitressing there reminds me of, I don't know why it came to me, but the La Fonda Harvey girls. You've established a pattern of longevity as a Harvey girl would have at La Fonda. And more importantly and why we're here today is Karen doesn't only take on the vocation of being very much a part of her community through what she does at the Plaza Café, she provides a lot of volunteer work, through actually the Toys for Tots organization, the Wings for Hope organization, and now she's very much a part of the Schooltime Duds Community Group. With that, Madam Chair, what I'd like to do is read the proclamation, get it enacted and then turn it over to Karen, and then congratulate her and have some photos taken.

This proclamation states:

Whereas, in 2002 there was a significant need for school clothing and shoes for children of local families as indicated by the fact that over 65 percent of the Turquoise Trail Elementary School population was on some level of public assistance;

Whereas, the Schooltime Duds Community Group was formed to provide assistance to Turquoise Trail Elementary School's families in need;

Whereas, the Schooltime Duds Community Group was organized to raise funds for families and works with the Turquoise Trail staff to identify those most in need of assistance;

Whereas, the Schooltime Duds Community Group has slowly grown from helping ten children in their first year to helping 90 children in 2011;

Whereas, each summer, the Schooltime Duds Community Group holds a fundraiser that includes live music, food, arts and crafts vendors, a motorcycle rodeo and raffle drawings throughout the day;

Whereas, with funds raised, the Schooltime Duds Community Group purchases gift cards from national retail stores for children's needs;

Whereas the Schooltime Duds Community Group has also been asked by the Turquoise Trail Elementary School to be a resource for the midyear emergency expenses of local families;

Whereas, every year the Schooltime Duds Community Group holds a fundraiser to promote awareness and engage the community support for this worthy cause;

Whereas, the school staff and the Schooltime Duds Community Group receives thank you cards each year from recipient families confirming how excited the students are to be wearing brand new clothing, some for the very first time in their lives;

Whereas, the nine years since the Schooltime Duds Community Group first held its fundraising event they have helped clothe 825 children;

Now, therefore, the Santa Fe County Board of County Commissioners proclaim the 30th of June, 2012 as Schooltime Duds Community Group Day. I move for the adoption of the proclamation, Madam Chair.

CHAIR STEFANICS: I'll second. We have several seconds. Would we like to vote on this before we comment?

The motion passed by unanimous [5-0] voice vote.

CHAIR STEFANICS: Comments from the Commission? I would like to make a comment. Since Turquoise Trail School has supported children from all over Santa Fe County. It's excelled in its educational programs. It recently opened some new programs and we really appreciate you and your group supporting those children in moving ahead in their lives. That's just great. Thank you so much. Would you like to tell us more?

KAREN WEBB: I didn't think I'd come to this program and get emotional in my speech. I happen to live in County housing, so to the woman who just retired I say thank you with all my heart. Also in paying it forward, not last year but the year before, Toys for Tots took care of two of the County housing – the one out on Jacobo and the Santa Fe apartments, we made sure that all the children for two years in a row got gifts for Christmas. So I invite you all to come, put on a black leather jacket or whatever, come out on June 30th to Highway 14 to the Brewing Company. It's a wonderful rock concert. It's fun and I thank you so much for this proclamation. I'm just the big mouth. Everybody there does all the hard work and I do appreciate your supporting us in every way possible. So thank you to everybody for all they've done for Santa Fe.

CHAIR STEFANICS: Thank you, and we're going to come down to congratulate you and take a picture. Thank you.

[Photos were taken.]

MS. WEBB: I'm hoping that Virginia, you'll be able to come out and present the proclamation.

COMMISSIONER VIGIL: I'll be happy to.

MS. WEBB: Wonderful. About 1:00. Miguel Chavez has also offered. So we'll see one of the Commissioners out there, if not all. Thank you very much again.

IX. D. Presentation of Government Finance Officers Association Distinguished Budget Presentation Award for Fiscal Year 2012

MS. MILLER: Madam Chair, we received notice from the Government Finance Officers Association that Santa Fe County received a budget presentation award. A panel of independent reviewers complete the examination of the budget documents and they informed us that the panel has decided to award our budget documents the distinguished budget presentation award for fiscal year 2012, so it's the year just ending. This award is the highest form of recognition in governmental budgeting and its attainment represents a significant achievement by your organization.

Also they state that when the distinguished budget presentation award is granted for an entity a certificate of budget presentation is also presented to the individual or department as being primarily responsible for having achieved the award, so a certificate was sent to the budget office in our Finance Division as well, which is Carole Jaramillo and Karen and Teresa. And I just wanted to let you know that when we do our budgets, what you approve as an interim budget is this document which is nothing but a bunch of spreadsheets and

SFC CLERK RECORDED 09/01/2012

numbers, but the one that we received the award for is the one that comes out later in the fiscal year and the Finance Department refers to it as the bible because it not only has all of the budget information but it's full of drafts and demographic data, historical data. There's a lot of work that goes into this document and I just want to congratulate the Finance Department and the Budget Division for putting this together.

CHAIR STEFANICS: So I'm going to read some of the other criteria, but could everybody from the Finance Department that's here come on up to the front row, and then we're going to take a photo. We also were presented with this really heavy-duty plaque, so I hope nobody throws it at anybody when you're doing the budget later on. But I would like to let you all know, the Government Finance Officers Association of the United States and Canada, GFOA, presented a distinguished budget presentation award to the County of Santa Fe, New Mexico, for its annual budget for the fiscal year beginning July 1, 2011. In order to receive this award a governmental unit must publish a budget document and meet program criteria as a policy document, as operations guide, as a financial plan, and as a communication device.

I'd like to thank Ms. Miller and all of the Finance staff who worked really, really hard to receive this national and over the country's borderline, Canada, this award. Thank you very much. Teresa, do you want to say a few words?

TERESA MARTINEZ (Finance Director): Madam Chair, members of the Board, a very big thanks to – you know it takes a village to get everything to run. You're looking at a village with a population of two right here. With some assistance from some of the other staff, but a lot of work goes into putting that document together and it really is my bible. So I'm very grateful and appreciative of the work they do for.

CHAIR STEFANICS: Thank you. And we're going to come down to take a photo, but thank you all very much.

[Photos were taken.]

CHAIR STEFANICS: Commissioners, thank you for letting us add that in.

IX. E. New Employees

MS. MILLER: Madam Chair, yes, we've had several hires. As usual, many of them are in the Public Safety Department and the County Sheriff's Office. We had in Public Safety a detention officer, registered nurse, a teacher, a forestry technician. And then in the Sheriff's Department, a couple cadets and a Sheriff's deputy II, but we do have one new employee in Growth Management, a community planner, and Penny will introduce her.

PENNY ELLIS-GREEN (Deputy County Manager): Thank you, Madam Chair, Commissioners. I'd like to introduce Elizabeth Salinas. She has just joined us as a new community planner about three weeks ago.

CHAIR STEFANICS: Could you stand? Thank you very much.

MS. ELLIS-GREEN: She was born and raised here in Santa Fe. She had lived in Florida for the past seven years where she worked for the Florida State Land Planning Agency, and she's also finalizing her masters degree in urban and regional planning from

Florida State University. She's already started working out in the community. She's working in La Cienega and La Cieneguilla and Chimayo at the moment as a community planner.

CHAIR STEFANICS: Great. Thank you very much and welcome to Santa Fe County. Ms. Miller, could you read the names of the other new employees, please?

MS. MILLER: Sure. In the Public Safety Department, the detention officer is Daniel Sanchez. The registered nurse is Kathleen Silva. The teacher is Max Wilcoxson. The Forestry Technician is Christen Maestas. And the two Sheriff's deputy cadets are Joseph Barela and Gabriel Ortiz. And then the Sheriff's Deputy II is Adrian Ing.

CHAIR STEFANICS: Thank you very much.

IX. F. Santa Fe County Fair Board Update

COMMISSIONER ANAYA: Madam Chair, thank you for continuing to indulge me and allow me to recognize people from the County Fair. We have with us today Jacqueline Baca who is one of our County extension agents. We have Lisa Guston, who is one of our Fair Board members, and I would add Ms. Guston is also a teacher in the Moriarty-Edgewood school district and I will say as a parent that I have first hand experience with her and she does excellent work as a teacher and for the community, as does Jacqueline with the extension service.

Also the youth, Jessica Guston, Cammy Goldberg, Keaton Jones and Wyatt Jones. So the floor is yours, Jacky, or however you guys want to proceed.

JACQUELINE BACA: Thank you and good afternoon, Madam Chair and Commissioners. Thank you so much for having us on the agenda so we can share some of the wonderful information regarding the County Fair and 4-H. We have with us some of our 4-H youth. We know in a past Commission meeting you got an update on the indoor side of projects with Abigail Mauer, so we thought today we would bring in a couple of youth to give a little more insight into the livestock projects. So I've asked each youth to tell us their name, what 4-H club they're in and one of their livestock projects that they are wanting to focus on to share more information with you on that project. So first I'll invite forward Ms. Jessica Guston.

JESSICA GUSTON: Hi. I'm Jessica Guston. I'm currently involved in the swine and sheep project. I want to talk to you guys about my sheep project. I love the sheep. I actually like them better than the pigs. I've learned so much from it, like responsibility and it's really helped me build my character and – oh, my club. I forgot to say that. I'm from Edgewood Chaparral. I'm really looking forward to competing at the fair this year and I thank you guys for all your support for Santa Fe 4-H.

KEATON JONES: Hello, my name is Keaton Jones. I've been in 4-H for about 7 years now. I'm in the Edgewood Chaparral Club. And I'm mainly focused on the poultry for showing them in the fair. I'm real interested in it and I've learned a lot from it and I just want to thank you for your support of 4-H.

CAMMY GOLDBERG: Hi, I'm Cammy, and I'm from the Edgewood Chaparrals and I'm interested in pigs. This is my first year doing it but it's been really fun.

2012/06/26 09:00 AM

Mr. and Mrs. Guston have really helped out. They've taught me almost everything I know about pigs and it's been really, really fun.

WYATT JONES: My name is Wyatt Jones and I'm from Edgewood Chaparrals. I've been in 4-H for about three years and I am also interested in pigs and I [inaudible] project. This is also my first year and I think I'm going to learn a lot from them and thank you for the support for the County Fair.

LISA GUSTON: Hi. I'm going to give you kind of an update as to what we've come up with for the fair now. The open and the 4-H Club books are now online. The invitations and fair books have been or are being delivered to the senior centers, craft and hobby business and youth organization. Promotional packets are being put together this week and next week they're going to go to business and have entry forms for like chile contests. This year a new component is going to be demonstration tables and they're going to have them on Saturday and Sunday of the fair. They're going to be done by extension associations and 4-H clubs and volunteers in the community. Right now we have a leather craft table, a weaving table and a felting table that's going to be going on.

As you know, this is the 100th year for the state and also the 100-year celebration for 4-H, so on a daily basis there will be continual activities going on. We would like to thank you for the new entry way that's at the fairgrounds now. It's coming along very well. And on the first fair cleanup the youth are going to be painting the gates and taking care of that. So we'd like to thank you for that.

CHAIR STEFANICS: That's great. That's absolutely great. Are there any comments or questions from the Commission?

COMMISSIONER ANAYA: Madam Chair, if I could, I'd just like to thank you all again for the continued work that you do. Please pass on to the Fair Board and all of the clubs that we appreciate their work. I know we've made some extra efforts to get some of the seniors more engaged in our indoor exhibit work as well, so it continues to be a community event and function and that's thanks to the kids, the children and the adults and all the hard work that goes behind it. Just a little precursor, Ms. Guston, we need to talk. We need to bring back Caleb here probably next month and maybe put him on the spot a little bit and congratulate him for the many things he's done recently. So that's a little precursor but we'll talk more. Thank you again very much.

COMMISSIONER MAYFIELD: Madam Chair.

CHAIR STEFANICS: Yes, Commissioner Mayfield.

COMMISSIONER MAYFIELD: Madam Chair, thank you for the presentation that was made and if I could just make a request also that maybe our senior services program can do a little more outreach as far as coordinating a field trip to our County fair. I would appreciate that if that would be at all possible. Thank you.

CHAIR STEFANICS: Okay. So, Mr. Pacheco, I hope you heard that. You were going to say something else?

MS. GUSTON: Yes. Could we impose for a picture with all of you and the youth for our record books?

CHAIR STEFANICS: That would be great, thank you. Okay, we're going to come down. Thank you for coming today.

[Photos were taken.]

OX. G. Presentation of Annual Tax Report [Exhibit 1]

GARY PEREZ (Deputy Auditor): Thank you, Madam Chair. Thank you, Commissioners. Good afternoon. I'd like to present the annual report to you. This annual report is basically valuation information so that we can update you on what we've done on the 2012 revaluation and see what you can hope to expect.

First of all, you'll see that I have historical information here dating back to 2008 and I've shown the comparison between each year starting with 2008/2009 and that is for your information for historical purposes. This is a comparison of the tax year 2011 to tax year 2012. Just to let you know, the total taxable value in 2011, and this taxable value is the amount that people are taxed on, which means that it's one third of the full value that the office determines for property tax purposes. The taxable value last year was \$6,797,475,523. This year our taxable value is \$6,861,149,049. That total difference is an increase of \$63,674,326 and that translates to a .9 percent increase over last year.

The numbers below that \$63 million number kind of tell you what's going on in the background. In the prior years we had not shown this to you last year when I presented this. I had not shown this background information to you, but I felt it was important so that you know what goes on in the background to eventually get to that change here that you see as \$63 million. First of all, we added \$80,058,532 in net new valuations. That means that this is new properties that was constructed that we pick up that weren't on the tax rolls. Again, this is one third of the full value.

So the next line shows the valuation maintenance. Valuation maintenance means – is properties that are currently on the tax rolls. So these are properties like a house and any change you would make to the house, like say a three percent change to the value or any kind of change. It's called valuation maintenance. Valuation maintenance actually decreased, so we actually lowered values by \$119,178,284 overall, between residential and non-residential property.

Also what is going on is currently we are in protest season. We have about \$102, \$103 million in protested value currently. So this is a variable that could change things toward the end of year before we sent things to DFA or before they finally finalize values in September and this could actually affect tax rates in the end. If we lose value, if we lose protests in protest hearings we could end up losing more valuation, or we could also maintain this number.

What I wanted to emphasize on the right there is the negative 1.8 percent. We have lowered properties overall from last year 1.8 percent. So I think in the past the Commission may have been under the impression that we have consistently been going up in value, but there are things going on in the background, such as this valuation maintenance increase. We have properties that go up and we have properties that go down, but the overall effect in the past years has been still a positive change, positive increase.

2102/10/08 08:00:00 AM

The next line down is the total residential value, so what I gave you now – what I first gave you is the total between residential and non-residential. I've broken it out between residential and non-residential here. In the residential category we had last year, the total valuation of taxable value of \$5.2 billion; this year it's \$5.231 billion. That reflects an increase overall of \$113,658,000. In the background you have going on, you had \$40.4 million in net new valuation that we added, and we had \$30,482,417 in valuation maintenance increases. And we have, out of the \$102 million that's protested, \$42,706,000 is in residential protests.

So what I'm trying to illustrate to you on the valuation maintenance is that we have increased residential properties, meaning residential improved properties – residential properties that have a dwelling on it, by only .6 percent on the average from last year to this year.

On the non-residential value, last year we had a total taxable value of \$1.579 billion; this year it's much less at \$1.529 billion. We've lost \$49 million, almost \$50 million in valuation on the non-residential side. Again, non-residential means any property that does not have a dwelling on it. For instance, residential vacant land is considered non-residential. Or commercial property is non-residential. Commercial vacant land is non-residential. So we decreased non-residential valuation by 3.2 percent overall.

In the background we have \$39.5 million of net new valuation that we added to the rolls, and we had a decrease of \$149,660,000 of valuation maintenance. We also have \$60 million in protested valuation. Again, we decreased valuation maintenance – existing properties that were already on the tax roll, by 9.5 percent. Do you have any questions on this portion of the presentation?

COMMISSIONER HOLIAN: Madam Chair.

CHAIR STEFANICS: Yes, Commissioner Holian.

COMMISSIONER HOLIAN: Thank you, Madam Chair. Thank you, Gary. So is the valuation maintenance include the three percent increases that you can put on property that is currently undervalued and is allowed to go up three percent a year?

MR. PEREZ: Madam Chair, Commissioner Holian, that's correct. That's what's considered part of valuation maintenance.

COMMISSIONER HOLIAN: And for the protested properties, those are properties that are currently being protested but the protests have not been decided yet?

MR. PEREZ: That is correct.

COMMISSIONER HOLIAN: Okay. Thank you.

CHAIR STEFANICS: Thank you. Yes, Commissioner Vigil.

COMMISSIONER VIGIL: I think I know the answer to this but just for the purpose of clarification, on the protested properties, are those mostly properties that have not had an assessment for years? Or are they properties that have received the three percent? Do you have a volume of properties that you might be able to describe that might be the typical protestant?

MR. PEREZ: Madam Chair, Commissioner Vigil, typical protests of properties are properties that have been on the tax roll or are on the tax roll. The majority of them are residential properties. It's mixed between residential, vacant land and commercial properties, but the majority of them are residential properties. These are properties, basically,

a person doesn't agree what their valuation is, what we said is. But I also know that a lot of people tend to protest their property values because they are in disagreement with their property tax. There's a correlation of course, but our job is to figure the valuation and based off the valuation that we said the valuation is determined.

A lot of people are focused on the fact that they think they're paying too much taxes. Therefore there's no way to protest your taxes but you can protest your valuation. So this is why we get protests, part of the time.

COMMISSIONER VIGIL: So with regard to the contract we have now, and this is sort of deviating from your presentation, but the assessments that are being done at this particular time with the contract we have, are we discovering that a lot of those residents or commercial or open land aren't on the rolls?

MR. PEREZ: Madam Chair, Commissioner Vigil, we have only been in phase 2 of the project since June 4th and so far they've done about 400 properties, and they're focusing on residential. We have contracted with this company to do only residential. The commercial and the vacant land will be done by our office, not the contracted company. So they have not yet run into any properties that have not been – any I should say houses that have not been on the tax rolls. They have run into properties that have things such as garages that were enclosed and made into a living area or maybe a porch that was enclosed and is now an enclosed porch. They're going to be running into things like that and I believe they have. We're starting to get that data back. We've only been starting to get that data back for about a week from them, and then we're going to be doing some quality control on their data, on their data collection. We'll be sending people out to do quality control and spot check them to ensure quality.

But yes, we're going to probably be – I worked in Doña Ana County. When I first started in Doña Ana County in 1989 I was hired to do a door-to-door reappraisal by the assessor at that time. I went through two reappraisal projects. I can tell you that they're going to be finding little things like that out there all the time because there's things that are done with permits; there's things that are done without permits. There's things that may have been done with permits here that we have not yet gotten to but we will on this project. So that was the whole reason for this data collection project.

COMMISSIONER VIGIL: Thanks. And just one more question, Gary. With regard to the figures we have before us, they really don't have much information with regard to the current contract for assessing. These are really past data figures. Are any of them incorporated?

MR. PEREZ: Madam Chair, Commissioner Vigil, this information is required to be given to you every year so that you know what the Assessor's Office has been doing as far as changing valuation. This report has nothing to do with what's currently being done by the outside contractor. What they're doing is collecting the data for us. They will then turn it over to us gradually and hopefully finish by the end of the year so that we can then get the information electronically and then reappraise ourselves with our own employees.

COMMISSIONER VIGIL: So is it fair to say that the benefit of that data collection will be available on your report next year?

MR. PEREZ: That is correct.

COMMISSIONER VIGIL: Okay. That is the distinction I needed.

MR. PEREZ: Madam Chair, Commissioner Vigil, that is our goal. Hopefully they will be finished in time so that we can use the data they're collecting for the reappraisal for next year.

CHAIR STEFANICS: Okay. Could you go on with the report?

MR. PEREZ: Yes. The next page or next slide is essentially just a bar graph. It's just a graphical representation of what the taxable value history has been from 2006 to the current year, 2012. Again, 2012 taxable value is \$6.8 billion. Here you also have a graphical representation of net new valuation. You can see how good it was in 2008 when there was more new construction occurring and now there's a lot less new construction occurring in 2012.

Part of the new construction that you see of that \$80 billion is property that were omitted from the tax rolls from prior years. This is basically information – you've seen this before; we're presented it a couple times, but I brought it today with the most current figures. For 2012 we have added \$4.42 million in net new taxable values from properties that should have been on the tax rolls in a prior year, and we're still working to get that done. Anything that we don't get done using our own in-house employees will be done by the data collection projects. Any properties that we found out that, for instance a house or any other structure that should have been on for prior years they will get back taxed up to ten years. That's what the law says. Domingo Martinez, the Assessor, is making sure that the employees adhere to this. So far to date we've had about – we have generated a lot of taxable value and generated about \$4.8 million in total tax revenue by doing this.

The next page is basically – this is basically a sales ratio study report and part of what the Assessor's responsibility is every year is to study the sales that have occurred in the prior year, compare them to the assessed value for this year and generate some statistics that basically show how well we're doing or how poor we're doing. In this case we're doing pretty well if you look at the statistics, and I want to emphasize that the sales that we're looking at here are combined sales. They're combined residential sales with non-residential sales. I really don't agree with generating statistics comparing apples and oranges and putting them in a mixed bag. I think that the State Property Tax Division should let us separate these two types of sales. Because these statistics kind of get skewed by the fact you're comparing vacant land and adding them in with how well you're doing with residential properties. But this is what the Property Tax Division requires us to submit every year in July. This is already prepared to submit to them and these are our statistics.

What's important to point out here is the median ratio there in the blue. There's a lot of information here and we could go on all day but I'm not trying to educate everyone what these mean. We'd be really happy to educate you or educate anyone after the meeting or at any other time. But the median ratio, meaning what we are assessing the property for compared to what it had sold for in the prior year, we are at 98.38 percent. The sample size, we had 1,423 sales that occurred last year that we are using here. So what we're trying to do is take these statistics and measure how we'll we're doing so that we can take the non-sales and we can assume, presume that what we have here can also be applied to the non-sales.

One other important number is the one in yellow. That is the price related differential. This one is 1.0281. The PRD should be between 1.00 and 100 and 103. Any thing that's above 103 means that you're being regressive in the tax, meaning that the lower valued

SFC CLERK RECORDED 66/61/2612

properties are being valued closer to the market value than the higher valued properties. So for instance, a \$200,000 may be assessed at \$200,000 and a million dollar home might be assessed at \$800,000. Here, we are found within the guidelines of what the standards should be; we're under 103, so we're doing a fairly good job give the information that we have.

That's essentially all I have for you. If there are any other questions I'd be happy to answer them.

CHAIR STEFANICS: Thank you very much and I appreciate receiving the report and your coming today to share. Are there any comments, questions from Commissioners? Yes, Commissioner Vigil.

COMMISSIONER VIGIL: I just want to thank Domingo. Every time I have a question from a constituent, I have nowhere near the expertise that you do and your accessibility to be able to respond to the questions that my constituents bring forth is really appreciated. And once I have an opportunity to speak with you it seems like all things are understood. And they also have the opportunity to protest, if that happens. So I appreciate that. Thank you so much for your open door policy, your accessibility and your willingness to explain some of the difficulties that you actually experience and what may or may not have happened with their assessment. Thank you.

CHAIR STEFANICS: Thank you. And Ms. Miller, could you make sure that Kristine or whoever works with the Assessor's Office on getting this posted for the public? Great. Thanks again for coming today. We appreciate it very much.

XI. Staff and Elected Officials' Items

D. Human Resources Department

1. Request Approval of Amendment No. 2 to the Collective Bargaining Agreement Between Santa Fe County and AFSCME

CHAIR STEFANICS: If we have any members of the bargaining units would you please come to the front of the room so we could move this pretty quickly.

BERNADETTE SALAZAR (HR Director): Madam Chair, members of the Commission, the current collective bargaining agreement between the County and AFSCME allows for Article XXIX to be reopened on the wage section, and just recently, the Board of County Commissioners approved the interim budget which included changes to demonstrate appreciation for work performed by County employees to include a temporary salary adjustment for retention, a one percent cost of living adjustment to be effective the first full pay period in January and to change the benefits of our health insurance for employees earning less than \$30,000 to increase the County's contribution from 63 percent to 70 percent.

With that, the Santa Fe County management team and the AFSCME Union bargaining team have negotiated these changes and are requesting approval to the second amendment of their contract.

CHAIR STEFANICS: Thank you. Before we go to the Commission, Mr. Lucero, do you want to say a few words?

SFC CLERK RECORDED 06/21/2012 2:12:10 PM

MR. LUCERO: Thank you, Madam Chair. Yes, I would like to thank both negotiating teams and management to coming to this agreement and recognizing that this isn't only going to help the bargaining unit, it's going to help all of Santa Fe County employees. This healthcare – I call it healthcare reform. For me, that's great. That's great news. That's going to help my family. Not only mine but everybody's that makes less than \$30,000. And I know you guys are going to do more for us in the near future and I look forward to working with you guys in trying to implement that and trying to move forward on that.

I'm going to be on the lobby team again this year for AFSCME and if there's anything I could do to try to help move forward legislation, let me know. Because I will be there. I'd also like to thank you guys for the one percent that you're going to be giving to the bargaining unit and the temporary salary increase adjustment. Thank you very much. I can't thank you so much.

CHAIR STEFANICS: Thank you, Mr. Lucero. Anybody else from AFSCME who wants to say anything? Commissioners? Yes, Commissioner Anaya.

COMMISSIONER ANAYA: Madam Chair, I want to thank all the staff and the collective bargaining units for their work. As I said earlier during the presentations for the degrees that we had, our employees and our volunteers are the bedrock of the County and very much appreciated. These items will help all employees, both union and non-union, but we do respect the collective bargaining negotiations and the work of staff in those and with that I would move for approval, Madam Chair.

COMMISSIONER VIGIL: Second.

CHAIR STEFANICS: Thank you. There's a motion and a second.

The motion passed by unanimous [4-0] voice vote. [Commissioner Holian was not present for this action.]

XI. D. 2. Request Approval of Amendment No. 1 to the Collective Bargaining Agreement Between Santa Fe County and the New Mexico Coalition of Public Safety Officers/NMCOPS

MS. SALAZAR: Madam Chair, members of the Commission, we are requesting approval of the same pay package for the Sheriff's Deputies Union. I don't believe that any of them could make it today. I think they're all out in the field working, but we again negotiated this amendment #1 to their contract and came to mutual agreement pretty quickly. So we request approval of the amendment and I stand for questions.

CHAIR STEFANICS: Thank you. Is there anyone in the audience from NMCOPS, from the Sheriff's? Okay. Thank you. Commissioners?

COMMISSIONER VIGIL: Move to approve.

COMMISSIONER HOLIAN: Second.

CHAIR STEFANICS: Okay. There's a motion to approve and a second.

REC'D CLERK - RECORDED - 60/81/2012

The motion passed by unanimous [5-0] voice vote.

XI. D. 3. Request Approval of Amendment No. 1 to the Collective Bargaining Agreement Between Santa Fe County and the New Mexico Coalition of Public Safety Officers

MS. SALAZAR: Madam Chair, members of the Commission, again, we request the same approval of amendment #1 for their contract with the same pay package, and again, I don't believe that any of our members of the RECC Union are able to join us today due to their shift work. Again, we negotiated with them pretty quickly on this item and we request approval of this.

CHAIR STEFANICS: Thank you. Is there anybody here from the RECC Union? Okay. Commissioners?

COMMISSIONER HOLIAN: I move for approval.

COMMISSIONER MAYFIELD: Second, Madam Chair.

CHAIR STEFANICS: There's a motion and a second.

The motion passed by unanimous [5-0] voice vote.

XI. D. 4. Request Approval of Amendment No. 2 to the Collective Bargaining Agreement Between Santa Fe County and the New Mexico Coalition of Public Safety Officers

MS. SALAZAR: Madam Chair, members of the Commission, again we are requesting approval of amendment #2 to the Corrections Union Contract with the same pay package as discussed previously with other bargaining units. I don't believe any of them are here today due to their shift work but we negotiated this pretty quickly. But I would like to mention, with all these bargaining units, especially the ones that are unable to be here and have any comments about this, we appreciate the work that they do and their willingness to work with management and come to the table and talk about our issues and coming to an agreement pretty quickly.

COMMISSIONER VIGIL: Move to approve.

COMMISSIONER HOLIAN: Second.

CHAIR STEFANICS: Thank you. Is there anybody here from that union?

The motion passed by unanimous [5-0] voice vote.

CHAIR STEFANICS: Thank you, Ms. Salazar, for all your hard work and for all the members of the unions who participated, and our Legal staff as well.

XV. A. 3. Resolution No. 2012-__, a Resolution Supporting Inclusion of the Town of Edgewood as a Member of the North Central Regional Transit District

COMMISSIONER ANAYA: Madam Chair, the resolution is self-explanatory so I will just read it. A resolution supporting inclusion of the Town of Edgewood as a member of the North Central Regional Transit District:

Whereas, Santa Fe County and the North Central Regional Transit District have entered into an intergovernmental agreement to provide transit services from Edgewood into Santa Fe;

Whereas, NCRTD currently operates a regional transit system that includes a bus route between the Town of Edgewood and the City of Santa Fe providing public transportation for communities in southern Santa Fe County including the Town of Edgewood;

Whereas, the NCRTD Edgewood to Santa Fe route has experienced a steady increase in ridership prompting replacement of the original 14-passenger bus with a 28-passenger bus in April of 2012;

Whereas, a regional transit gross receipts tax levied in Santa Fe County provides funding for the NCRTD transit services within Santa Fe County;

Whereas, it is estimated that the Town of Edgewood collects approximately \$100,000 in regional gross receipts tax dollars each year;

Whereas, Santa Fe County has determined that the inclusion of the Town of Edgewood as a member of the NCRTD will assist in ensuring that the public transportation needs of the residents of southern Santa Fe County are considered and addressed by the NCRTD;

Now, therefore, be it resolved that the Board of County Commissioners for Santa Fe County supports the addition of the Town of Edgewood as a member of the NCRTD.

I would move for approval, Madam Chair.

COMMISSIONER HOLIAN: Madam Chair, I'll second for purposes of discussion.

CHAIR STEFANICS: Thank you. This is a resolution so we will take public comment. Is there anyone in the audience who would like to comment on this particular resolution? Seeing no one, the public comment period is closed. And I'm not sure we should be doing this. Mr. Ross is gone. Because it's noticed for after 5:00 and that's when we're taking public comment. So I think we'll go ahead and we'll take a vote or we'll take discussion and we'll ask for Mr. Ross' comment when he comes back. Commissioner Holian, did you have a comment?

COMMISSIONER HOLIAN: Yes, I did. Madam Chair, I just wanted to say that I want to emphasize that I am supportive of Edgewood being a member of the NCRTD, but I am going to abstain from the vote, and the reason I am going to abstain from the vote is that in general, it's my principle that I believe that members of the Commission who are members of boards should make their votes based on the evidence and all the information that they hear at the board meeting. The decision as to whether to include Edgewood as a member of the NCRTD is actually up to the NCRTD board and at the last meeting there were

SFC CLERK RECORDED 88/61/2812

some questions that were brought forward. Staff wanted more discussion with the Edgewood representatives and so I just feel that my ultimate decision should be based on all the evidence that I hear, although I want to emphasize that I am in general supportive of Edgewood being a member of it and I certainly will respect the wishes of this Board in this vote.

CHAIR STEFANICS: Thank you. We have Commissioner Anaya then we'll have Commissioner Vigil. Do you have a comment? Sorry. Commissioner Vigil.

COMMISSIONER VIGIL: Just procedural questions. This resolution is just basically saying that it supports representation, I guess it's one from Edgewood. What I'm wondering is what this does to the voting weighted system that NCRTD and Commissioner Holian said she does.

COMMISSIONER HOLIAN: Madam Chair, I can answer that because that was presented to us. The Town of Edgewood would have one vote. There would then be 30 votes total on the NCRTD board, but then some entities have more than one vote. For example, the City of Santa Fe and the County of Santa Fe each have five votes. I think the Town of Española has three for example. So that total number would go to 30 and no other entity would lose any votes. In other words, Santa Fe County would continue to have five votes.

COMMISSIONER VIGIL: So is there currently 29 voted and this addition brings it to a total of 30?

COMMISSIONER HOLIAN: That's correct.

COMMISSIONER VIGIL: Okay. I needed that clarification. And then with regard to this procedurally, this is strictly a recommendation so it goes to NCRTD? They're the ultimate authority?

COMMISSIONER HOLIAN: Yes.

COMMISSIONER VIGIL: Okay. I get it now.

CHAIR STEFANICS: Members of the Commission, I've just been advised by Legal – this was noticed for after five o'clock so we have to lay this aside until after 5:00. And I apologize to anybody who might have gotten ready to participate in this but I'm sure it will go fine when we come back.

COMMISSIONER ANAYA: On that point.

CHAIR STEFANICS: Yes.

COMMISSIONER ANAYA: Madam Chair, on that point, in the future I'm going to ask items be posted, that we break it up. If some Commissioners feel they should have their items after 5:00 that's fine but I'm going to ask that items be put in sooner, earlier in the day. Sometimes we don't have many agenda items. We've had meetings where nobody's here after 5:00. So I'm going to ask in the future that we post items sooner. But I would say on this – can I just make a comment?

CHAIR STEFANICS: Sure.

COMMISSIONER ANAYA: I would just say on this item that I think Commissioner Vigil, you just articulated the core of it. This is a recommendation supporting an entity in our county that wouldn't take anything away from our votes but would provide a seat at the table for one of our jurisdictions. I did have conversations with the Mayor and several councilors and I would just ask us to remember that we have excellent relationships

2012 JUN 26 09:51 AM

associated with our Fire Department in our agreements, our Sheriff's Department, in working with the Town of Edgewood, the libraries, the youth programs. This is an extension of that cooperation. I strongly believe it would send a terrible message if we didn't support them wanting to be at the table representing their own interests as taxpaying citizens and the fact that they pay in an estimated \$100,000 through this tax. So thank you, Madam Chair.

CHAIR STEFANICS: Thank you. We will come back to formal action on this resolution after 5:00 along with the others.

[See page 41.]

XI. A. Administrative Services Department

1. Request Approval of Amendment No. 6 to Agreement #27-0732-CSD/RM Construction Management Services for Steve Herrera Courthouse Complex with Gerald A. Martin, LTD in the Amount of \$190,759.90, Inclusive of GRT

BILL TAYLOR (Purchasing Director): Thank you, Madam Chair, members of the Commission. Purchasing Division requests approval of amendment #6 to the Santa Fe County agreement #27-0732-CSD/RM with Gerald A. Martin, Ltd. for construction management services for the new judicial courthouse project. This amendment #6 increases the total compensation up to \$190,759.90. Madam Chair, additional services or costs outlined in this amendment would cover costs for additional basic services, reimbursable expenses for construction management throughout the remainder of the project, costs for consulting services for the construction of the barrier wall, and an extension of the term of the agreement from August 31 through January 13, 2013.

Again, let me repeat that. August 31, 2012 to January 31, 2013. And with that, Madam Chair, I'll stand for any questions.

CHAIR STEFANICS: Thank you. Commissioners, questions, comments? This is not a resolution so there's no public comment.

COMMISSIONER HOLIAN: Madam Chair, I move for approval.

COMMISSIONER VIGIL: Second.

CHAIR STEFANICS: Okay. Any further discussion, questions? There's a motion and a second.

The motion passed by unanimous [5-0] voice vote.

CHAIR STEFANICS: Commissioner Mayfield, you're still on the phone?

COMMISSIONER MAYFIELD: I'm still with you, Madam Chair.

CHAIR STEFANICS: Okay. Thank you.

XI. A. 2. Request Approval of Amendment No. 3 to Professional Service Agreement #2011-0187-CORR/TRV with Sierra Detention Systems for Additional Services with an Increase in Compensation By \$28,759.00 for a Total Compensation of

2012/06/26 09:58:00 AM
SFC CLERK RECORDED 88/31/2012

\$547,695.00

MR. TAYLOR: Thank you, Madam Chair. The Santa Fe County Purchasing Division does request authorization for amendment #3 to the professional services agreement for Sierra Detention Systems to incorporate the cleaning, lubrication – this is basically preventative maintenance, upkeep and Purchasing solicited a request for proposal back in 2011 primarily for solicitation, replacement and repair, preventative maintenance, upgrades, of intercom camera systems at the Santa Fe County Adult Detention Facility. The total, again, Madam Chair, \$28,759. With that I'll stand for questions.

COMMISSIONER VIGIL: Madam Chair, I move for approval. I desperately move for approval, being one of the Commissioners who recognized this need from some time back.

COMMISSIONER HOLIAN: Second.

CHAIR STEFANICS: There's a motion and a second. Is there further discussion or questions?

The motion passed by unanimous [5-0] voice vote.

XI. B. Public Works Department

1. Discussion and Approval of Initial GRT Program and Continued Discussion of Draft Capital Improvement Plan

CHAIR STEFANICS: While Mr. Leigland is coming up, Commissioners, we have scheduled, and I thought we were going to pass it out today, but we have scheduled work study sessions for the morning of July, August and September on the BCC meetings where we have afternoon meetings. So in July it will be on annexation and capital projects. In August we'll start with the code, and probably in September we'll continue with the code. So if you would please protect your calendars for the morning. And Ms. Miller, are we talking about like 10:00 to 12:00?

MS. MILLER: Madam Chair, that's what we have on the trends for sure, that's what we were going to try to target. If it looks like it's more we would probably go to a lunch and provide lunch and go continue through lunch.

CHAIR STEFANICS: Okay. So if one of the staff would just send reminders to all our calendars we would appreciate that. So Mr. Leigland.

COMMISSIONER HOLIAN: Madam Chair.

CHAIR STEFANICS: Yes.

COMMISSIONER HOLIAN: Madam Chair, just a clarification. So that's going to be on – on the July 10th it's annexation and capital improvements?

CHAIR STEFANICS: Yes. Because that meeting would then prepare us for the discussion with the City Council-County Commission joint meeting on July 19th. So Mr. Leigland.

MR. LEIGLAND: Madam Chair, Commissioners, we handed out to you a small packet this time because not much has changed from the previous two large submissions that we gave you. [Exhibit 2] So let me launch into what was just handed out.

To remind you, this is sort of a two-fold item. One is a continued discussion of the larger capital improvement plan that we're proposing which I remind you includes \$35 million in the eventual bonds that this Board decides to issue and \$30 million from gross receipts tax. So we are lumping both of those capital fund sources into a large CIP program for a total of \$65 million and that is what is before you right now.

So skipping over the first page, which I'll return to in a minute, the next pages are just a list of the projects allocated according to their district. So for instance, on the very first page it says capital project by district, District 1, these are all the projects under this large capital improvement plan I'm presenting that would be in District 1 and so forth, with a total at the bottom of each list.

As you continue back you'll come to a list called All Districts and those are capital projects that really could be allocated to all five districts since they have countywide impact. Continuing on you'll find a large pie chart, so taking that entire \$65 million package that we're proposing, this pie chart shows how it's allocated across each of the districts. And as I've mentioned in the past we strove for inter-district equity in terms of trying to make sure each district got its fair share. Achieving perfect 20 percent is impossible just because of the lumpiness of the projects. The districts just have large projects that are indivisible so that makes it very hard to get to the full equity.

The following list, as I mentioned, we are combining two separate fund sources – GRT and general obligation bonds and the bonds itself will be built in with this proposal into three separate lists, roads, water and parks. So the last three pages are the lists of projects allocated to is it a road project on the bonds? On the road bond question, which is the very first list that you have \$19 million proposed for that. We have \$10 million for the roads, \$6 million for open space, and then on the very last page is GRT, which is primarily facilities, because as we learned earlier in the year facilities aren't good for bond questions.

I want to stress that when we presented this to you for the first time a month ago we allocated the funds pretty evenly across project type but we heard loud and clear that the Board wanted more focus on roads, less focus on other categories, so this list reflects that.

So if there are no questions on that – and again, this is just an informational item. This is just for continued discussion. And I'll offer once again, we can come and meet with you if you have questions about individual projects on this list, about the process itself or anything else. So we will be coming later to this Board for approval of the remainder of the package.

Now, turning to the first page of the handout, this is the meat of today's presentation. In order to provide for a quick and orderly execution of all the projects in this packet we are asking for approval today of \$11.7 million for all the projects that are on the very first page of the handout. Now, what you'll notice on this is most of these items on the front page are just developments or designs or studies or acquisitions, and the intention is if this \$11.7 million is approved today at the beginning of the fiscal year we can come out of the gate running. This is probably a good three to four months of work for staff, and that sets us up to be in a good place if the bonds are passed in order to execute those in a very orderly and expeditious manner.

So you'll see a mix of projects on this. We're calling this the quick start because it is our intention to get a quick start. So you'll see a mix of projects on this quick start list, and really, this quick start list should be seen as supporting every other project that's in this

2012/06/26 RECORDED 09/01/2012

package. So again to remind you, this first list is what we're seeking approval today to allow us to start spending this money the first week in July, and then everything else is still for information and as I mentioned, we will be seeking your approval later in the year for those projects. And with that, I'll stand for questions.

CHAIR STEFANICS: So Mr. Leigland and Katherine, just to clarify, you are asking for a formal approval vote today of the quick start GRT funding capital projects?

MS. MILLER: Madam Chair, Commissioners, yes. As he has stated, when we did the interim budget we left out any major capital. We did fixed asset renewal replacement which included equipment and that type of thing. What we did not include in the interim budget the actual – any of the capital projects. And we also had not put too many of them in this current fiscal year, fiscal year 12. So we are asking for that so that we can get this built into the budget approval that you're going to do under the Finance Department and we can get that submitted with our final budget for fiscal year 2013.

CHAIR STEFANICS: Thank you. So, Commissioners, before we would move to approve are there questions or comments?

COMMISSIONER ANAYA: Yes, Madam Chair.

CHAIR STEFANICS: Commissioner Anaya.

COMMISSIONER ANAYA: When I looked at the list I guess – I guess I'm really not ready today to approve the list. I have questions. I see on here we have senior center design and acquisition. I know we're looking for land and we don't even know if we're going to have it donated or not. But then I see \$1.5 million Eldorado improvements, \$150,000 Nambe, and then it jumps down, a lot of countywide stuff, and that it jumps down, Santa Fe Rail Trail – what segment is that \$821,000? What is that and what district is that in?

MR. LEIGLAND: Madam Chair, Commissioner Anaya, let me ask Mark.

CHAIR STEFANICS: Okay, so I just want to refresh everybody's memory. We did have this provided to us, this list, prior. So this is not the first time we're seeing the list.

COMMISSIONER ANAYA: We had the list but to start with these immediately and the rest of them to sit idle, I guess is what I'm raising concern about on a district by district basis. I can understand your perspective in looking at the list but I wanted to – give me some feedback on the Rail Trail segment and can we have some discussion at least as to having a certain number of capital projects that are countywide from each district not just from a few districts? That are quick start projects that we've had numerous discussions about.

CHAIR STEFANICS: So the first question – let's break it out. So the first question, Mr. Hogan, is about the Rail Trail segment. So could you address that please? The Commissioner wanted to know the Santa Fe Rail Trail segments, what districts is it in and who would benefit from it?

MARK HOGAN (Facilities Manager): Madam Chair, Commissioners, that section of the trail is in Districts 4 and 5. Part of what got these on the quick start list, these are projects that are already completed with design and we can go immediately to bid. That Rail Trail is sections 1 through 6 are all completed in design so we wanted to add that on as one we could start right away. It's a continuation of the trail we have under construction right now.

COMMISSIONER ANAYA: So, Madam Chair, Mr. Hogan, help me understand how the wellness center in Stanley in particular is not on this list but there are others on this list that aren't as far along as that project.

MR. HOGAN: Madam Chair, Commissioner, the procurement is already underway for the unit in Stanley. So that is actually in a bidding process right now. So it's ahead of the quick start projects.

COMMISSIONER ANAYA: Madam Chair, Mr. Hogan, there is a substantial amount of money in new projects that are on here that are not as far along. So would you be amenable to adding some quick start resources to help cover that project, given that the property is in place and we even had a master plan and discussions and we also had resources that were allocated that we were ready to do expenditure? I guess I'm just puzzled to see some of the other projects on here and not that project, given that we bought the property, have some design done, and even understanding the portable; you and I just had a brief conversation about the portable. But we could do a lot of work quickly on perimeter fencing on even potentially a building acquisition with an amount similar to several of these amounts listed in front of me.

MR. LEIGLAND: Madam Chair, Commissioner Anaya, you asked if we're amenable to adding to this, it's totally up to your discretion. This list was really more of a reflection of what I felt staff could handle in a fair manner over the next quarter, again to get us ready for the bonds.

COMMISSIONER MAYFIELD: Can you hear me?

COMMISSIONER HOLIAN: Commissioner Mayfield, on that point. Hello. Actually, Commissioner Anaya, I have a question. Could you describe what the Stanley center is and what the current status of it is?

COMMISSIONER ANAYA: Madam Chair, the County purchased property a few years ago. They've been planning the project for probably six years now, five years at least. We received an allocation of resources from the state legislature. The County didn't spend those resources. Those are part of the resources that were lost. There was master plan drawings associated with that complex and other improvements. It needs a well, it needs other utilities. Those things were set forth well before some of the projects that I'm looking at. So I'm looking at a little bit of equity and Ms. Miller, do you have any suggestions that might help us through this?

COMMISSIONER HOLIAN: Commissioner, first I have another question. So what exactly is the Stanley center? What's the function of it?

COMMISSIONER ANAYA: It's a youth agricultural and wellness center. We're going to have community rooms and we're ultimately going to have a facility that would be open to residents in southern Santa Fe County and the entire region down there, even partnering with neighboring children, seniors and adults in the surrounding community. I brought this up at almost every single meeting that I've sat here as a Commissioner, so that's what the project is.

COMMISSIONER HOLIAN: And so how much money was allocated by the legislature and how much would have to be bonded for?

COMMISSIONER ANAYA: Madam Chair, I believe the legislature allocated \$350,000 but I can get you the exact numbers and provide the plans that the staff has and a copy of the deed that the County has acquired.

COMMISSIONER HOLIAN: And how much would be bonded for in the County?

COMMISSIONER ANAYA: I don't know that we need to bond anything if we're going to use the GRT funding at all.

COMMISSIONER HOLIAN: I was wondering about the total cost.

MS. MILLER: Madam Chair, Commissioners, it is actually in the next section, if you look on the page for District 3 there is a recommended \$1.2 million. And Commissioner Anaya, I think the only issue is we do have funding currently in this year's budget and what we do have funding for we are moving forward with that right now and this was proposed to be in the whole package. They're currently working – I think that's what Adam was saying – they're currently working on that right now and putting more money to it today wasn't going to make a difference in what we are doing today, because they are planning on this being in the overall capital package. If you want to move some of that, because it is recommended as GRT funding, if you want to move some of that \$1.2 into the current, today's quick list I don't think there's a problem with doing that at all.

COMMISSIONER ANAYA: I'd like to hear from Commissioner Vigil or others on the list. I guess I haven't heard feedback on the quick start list.

COMMISSIONER HOLIAN: Commissioner Vigil.

COMMISSIONER VIGIL: Well, I'm not sure I have any comment, but being that I've been sort of given the floor, the question is where do you see the inequity, Commissioner Anaya?

COMMISSIONER ANAYA: Madam Chair, as I read this list these are projects that would immediately be in work to hard construction in the first quarter of next year. I see one that's potentially a shared project with multiple districts at the top of the list, that's for design and land acquisition and that's it, that's specifically related to a district. That's the inequity that I'm specifically referring to.

COMMISSIONER VIGIL: Madam Chair, if I still have the floor.

COMMISSIONER HOLIAN: Yes, you do.

COMMISSIONER VIGIL: I guess I'm not grasping the inequity. I thought when you first referenced it I thought you meant inequity in distribution in districts, but you're saying the one project represents inequity.

COMMISSIONER ANAYA: [inaudible]

COMMISSIONER VIGIL: It's which project again?

COMMISSIONER ANAYA: The one project that I would constitute as immediate for District 3 and it's multiple districts is the senior center. That's what I'm pointing out.

COMMISSIONER VIGIL: Okay. And it's not on here?

COMMISSIONER ANAYA: No. What I'm saying is that's the only one that's partially District 3 and is the only one on the list. And I'm also taking into consideration what was spent in the immediate fiscal year that we're in as far as projects. I think what I'll do

relative to that is just ask staff to bring back the project expenditures in the recent fiscal year. I'll just leave it at that. Thank you, Madam Chair.

COMMISSIONER VIGIL: I have a question. Where is County Road 98, phase 2?

MR. LEIGLAND: Madam Chair, Commissioner Vigil, County Road 98 is the road to Chimayo, and phase 2 is we just recently – this project is to increase the shoulders as well as for pedestrian and non-motorized safety. We just recently finished phase 1 which was to put the shoulder on one side of the road. The other side of the road had already been designed as part of this project; we just didn't have the funding to execute so now this will allow us to put the shoulder on the other side of the road.

COMMISSIONER VIGIL: Thank you, Madam Chair.

COMMISSIONER HOLIAN: Katherine, do you want to make a comment?

MS. MILLER: Madam Chair, Commissioners, I want to reiterate, part of the reason for this particular list, the way that it is, to get it started now is that these are projects that are already ongoing and it's to keep them going. Some of the other projects – what we did is we pulled off, out of the overall list, because there was a request to have more discussion about that. I want to reiterate we've been bringing this to the Commission for approximately three months now. The total project list, the pared down project list, the broken down projects list, so we're just trying to get something going. Because what I'm concerned about is we're going to miss this year's construction cycle if we don't keep funding some of the projects we already have going.

If you want to wait on it we can wait but the recommendation here is based upon ongoing projects, projects that we know from community input, from Commissioner input, that we've had requests for for the better part of the year to keep moving or to continue and move into the next phase. So that's why the senior center for the Highway 14 area – you'll notice though we asked for approval of the overall list but there's been a request for more discussion on that. So we were trying to pare out some of it that we could keep going or get moving right now, and we did try to spread it out throughout the county, not just in one area. We did try to spread it out across the county and across districts, subject areas – community service, public safety, county facilities, open space, roads, the road project engineering. It got broken down by project areas, but that's also to do some of the engineering work so if the bond passes we can actually get going. So that will be throughout all the individual districts based upon the road bond question where we laid out about \$20 million worth of road projects.

Same with local government road fund match, that goes off of our request for the state for funding and that would go to match the roads that would come up on that one. So I just want to say that it wasn't done by each individual Commission request; it's comprehensive based on County needs, community needs, and Commission requests, and timing/project readiness. That is the overall basis for the recommendation.

COMMISSIONER HOLIAN: Thank you, Katherine. Commissioner Vigil, first and then Commissioner Anaya. Commissioner Mayfield, are you on the phone?

COMMISSIONER MAYFIELD: I am on the phone. I've been going in and out, but I do have one comment that I'd like to make when you guys are –

COMMISSIONER HOLIAN: Okay. After Commissioner Anaya then it will be your turn. Commissioner Vigil.

COMMISSIONER VIGIL: Madam Chair, I'm ready to make a motion. I move for approval of these project ready projects.

COMMISSIONER HOLIAN: I'll second that for purposes of discussion. Commissioner Anaya.

COMMISSIONER ANAYA: Madam Chair, I get the picture and I see what's available and I've always stood in support of projects for other districts. That's not the point. Madam Chair, Ms. Miller, could you tell me a little more – one of the things I asked about and been very supportive of is the training center that is located in District 3 that helps all fire departments throughout Santa Fe County. Could you talk to me a little bit about what that \$1.25 million is?

MR. LEIGLAND: Madam Chair, Commissioner, I'll turn that over –

MS. MILLER: Madam Chair, Commissioner Anaya, Chief Sperling.

DAVE SPERLING (Fire Chief): Thank you, Madam Chair, Commissioner Anaya. Our intention is to continue to develop the training center for use of our volunteer staff as well as career staff and a more bona fide training center. Right now it includes a classroom but we do intent to improve the training grounds with props and other items that will facilitate the use of it for fire training purposes.

COMMISSIONER ANAYA: Madam Chair, Chief, are we going to specifically look at – I know the pond was one of the areas that we were looking at. Is that going to be one of the areas in this \$1.2 million?

CHIEF SPERLING: Madam Chair, Commissioner Anaya, we had done an assessment of the pond and the cost to rehabilitate the pond was quite excessive. We have been in discussions with the Soil & Conservation District to see if there's anything they can provide by way of assistance.

COMMISSIONER ANAYA: So, Madam Chair, Chief, you're going to add a classroom? And what else specifically are we going to do? That's a pretty good chunk of money. What other specific improvements, since it seems like we're ready to go here in July, are we going to make?

CHIEF SPERLING: Madam Chair, Commissioner Anaya, the intention was not to add an additional classroom. Right now we do have maintenance needs that the facility really requires to be fully functional, and then most of the addition that we're considering are outdoor training props and things specific to use of our staff for improvements in their training program. Right now, in order to do any fire training we have to send our staff to Socorro and that becomes expensive and difficult, in particular for our volunteers.

COMMISSIONER ANAYA: So like a fire curtain and a burn building and stuff like that?

CHIEF SPERLING: Madam Chair, Commissioner, yes. The intention would be a burn building for interior structural purposes, several propane props related to fighting propane fires around residents, a vehicle prop and things of that nature that really will enhance our training program. In particular again for our volunteers who find it very difficult to head to Socorro.

COMMISSIONER ANAYA: Thank you, Madam Chair. Thank you, Chief.

2143/19/08 08:00:00 AM

CHAIR STEFANICS: Thank you. I understand, Commissioner Mayfield, you have some questions?

COMMISSIONER MAYFIELD: Thank you, Madam Chair. Madam Chair, is Chief Sperling still up front? And Chief, is that fire department training center is that appropriated to District 3?

CHIEF SPERLING: Madam Chair, Commissioner Mayfield, that's correct. It's in District 3.

COMMISSIONER MAYFIELD: Okay. Thank you for that. And Madam Chair, as far as, and I don't know about the discussion on these quick funded capital projects, but I did sit down and met with Mr. Leigland and his staff. I also had some brief discussions with Manager Miller, but [inaudible] that we're trying to put forward, and as far as the equity goes, if we look at the whole pie chart that's in front of you all, that's all I'm looking at, and here's one component to make that equity whole. So with that I definitely support these projects moving forward.

CHAIR STEFANICS: Thank you. Any further questions or comments? I understand there is a motion and a second for approval of the quick start GRT-funded capital projects.

The motion passed by unanimous [5-0] voice vote.

XI. C. Finance Department

1. Resolution No. 2012-78, a Resolution Requesting Approval of the Fiscal Year 2013 Final Budget

CHAIR STEFANICS: Ms. Martinez, is this more or less confirming the budget that we have tentatively approved? Okay. So go ahead with your presentation.

MS. MILLER: Madam Chair, you handed me a letter. This is one of the letters we were waiting for from DFA/Local Government Division, and in accordance with state statute, Local Government Division had examined our interim budget for fiscal year 2012 and 13 and hereby grants approval and certification for use of that pending approval of the final budget, which we now have in front of you. Sufficient resources appear to be available to cover proposed budget expenditures, and then approval and certification of our final budget is contingent upon the submission of the following by July 31, 2012. The resolution that will be in front of you adopting the final 2012/13 final operating budget. A resolution approving the June 30, 2012 financial report, the year-end June 30, 2012 fourth quarter financial report, the unaudited beginning cash balances as of July 1, 2012, and the 2012/13 budget provided electronically to the Local Government Division.

With that I turn it over to Teresa to give the changes that would have been from the interim budget for now.

CHAIR STEFANICS: Thank you. And then we will go to public hearing after your presentation. Go ahead.

MS. MARTINEZ: Madam Chair, on May 29th you approved an interim budget at a total value of \$227.2 million. Today we stand before you asking to approve the final budget at a value of \$239.8 million. The lion's share of the increase of \$12 million can be

attributed to capital projects. We had a slight decrease in some of the carry-forward balances relative to capital projects of \$2.8 million for all projects Countywide, and then we had additional capital projects part of which was some of the quick start list that you've seen today, as well as some other bond projects, so there was cash carryover.

We've had a few small grants. We've had a few Water Trust Board agreements and then some housekeeping transfers between funds relative to the asset renewal package. So total budget, our request today is approval of a budget of \$239,890,842. And as indicated this is due July 31st. We ask for your approval on this date so that once approved by the BCC we can then roll it over and begin the next fiscal year with the established budget authority accordingly by the chart of accounts. So I stand for questions.

CHAIR STEFANICS: Thank you very much. This is a resolution so I'm taking public comment. Is there anyone here in the audience who would like to comment on the budget for the Santa Fe County for the next fiscal year?

CHAIR STEFANICS: Okay. Thank you. Commissioner Vigil, then Mayfield, then Holian.

COMMISSIONER VIGIL: Teresa, thank you for this presentation and thank you for taking a really strong leadership role in getting us through this budget. My question to you today is is anything that we're approving anything that what you previously presented to us?

MS. MARTINEZ: Madam Chair, Commissioner Vigil, for the most part, no. The increases are really relative to a lot of the capital projects, the discussion that has gone on. So you just approve the quick start for \$11.7 million and the difference was \$12 million. So the other stuff was really minimal. So it's really all the capital project items.

COMMISSIONER VIGIL: The minimal stuff is what?

MS. MARTINEZ: We had a couple of grants come in between the interim and now so I went ahead and recorded them, and then we have a couple of Water Trust Board agreements that we included, and then again a housekeeping item on operating transfers between funds.

COMMISSIONER VIGIL: So we haven't put in any new programs that haven't been discussed or anything of that nature, have we?

MS. MARTINEZ: No, ma'am.

COMMISSIONER VIGIL: Okay. Thank you, Madam Chair.

CHAIR STEFANICS: Thank you. Commissioner Mayfield.

COMMISSIONER MAYFIELD: Madam Chair, thank you. Madam Chair, Ms. Martinez and staff, I just wanted to compliment you all on what you put forth, having put a lot of effort and time into it and also I did comment on this earlier but just again congratulations to all of you for your hard work and the recognition you received a little earlier. So thank you.

MS. MARTINEZ: Thank you.

CHAIR STEFANICS: Thank you. Commissioner Holian.

COMMISSIONER HOLIAN: Thank you, Madam Chair. Teresa, I would like to also thank you and staff. I have to say that this was the best year for me going through this whole budget process. It was clearer and very well presented to us. It was very easy to

understand what was going on, and it certainly was nice to be in the position of not having to cut services or staff, things like that. So anyway, again, thank you.

CHAIR STEFANICS: I would move Resolution 2012-78, and after we'll still take other questions and comments.

COMMISSIONER MAYFIELD: Second, Madam Chair.

CHAIR STEFANICS: There is a motion and a second. Further questions and comments?

The motion passed by unanimous [5-0] voice vote.

XII. Matters From the County Manager

A. Monthly Financial Report for the Month Ending May 31, 2012

MS. MILLER: Madam Chair, the financial report is in your packet and if you would like I could have Teresa go through it quickly or if you don't have any comments or questions it's totally up to you. We can give a quick summary of it or it's there for your review.

CHAIR STEFANICS: Could either you or Ms. Martinez provide any highlights or changes that we or the public might want to be aware of?

MS. MILLER: Yes, we did actually, Madam Chair, we gave up an update on the revenues. Go ahead, Teresa. We added a couple of little statements.

MS. MARTINEZ: Okay. Madam Chair, members of the Board, overall, we had total recurring revenue of \$104.8 million with expenditures totaling \$78.4 million, and we still have outstanding encumbrances to the tune of \$15 million. We went into the detail as we usually do for the larger capital projects as we usually do for the larger capital projects if you will, by the month of May we totaled \$35.5 million and they're listed with some of the bigger projects identified for you by the year-to-day May expenditure level.

On the revenue side, property tax collections have totaled \$33.8 million through the end of May, which by far exceeded out budget of \$31.1 million by \$2.7 million. The collections are \$822,000 greater than the previous year, or at least two percent better than what we collected in the prior year through May. We included the chart for you so you can see the budget versus actual. Tentatively, our GRTs also did better than budget. We had total collections of \$35.8 through May, which are about \$1.9 million greater than the budgeted amount and also exceeded the prior year collections by \$1.2 million. So the revenues materialized better than budget, which is a good thing.

Our expenditures are on track, and again, we have outstanding encumbrances, so what we'll do is we'll come back to you with the unaudited June quarterly report, and then we'll follow up when we finish the audit with the final audited numbers.

CHAIR STEFANICS: Thank you very much. Other questions, comments? You don't need this report – it's not noticed for action, but thank you very much. We will continue to look for these reports in the future. And of course it's posted on the website, correct? Okay. So the members of the public can always look for this type of information on our website.

XII. B. Construction Report

MS. MILLER: Madam Chair, Commissioners, in your packet is also the construction report, but I wanted to bring up project that Commissioner Anaya and I talked about and was brought up at the last BCC meeting and that was the Edgewood fire station. I asked Chief Sperling to work with – we had budgeted for this project and I cobbled together funds from several different areas to get this project designed and budgeted for so we could go out to bid. One of the – actually two requests that Commissioner Anaya had asked about were that we would have space available in there for perhaps a satellite office or even a future Sheriff's substation or something. Well, the original design did not include space for that, but this drawing that was handed out, what we did is we went back to the architect and said is there a way to make this site so that we could have future growth on this particular site for additional office space if we had – if we wanted to build a satellite office and pre-substation. And then also they looked at working with – the Town of Edgewood has been really great at working with us on that Municipal Way, because their site, their municipal buildings are going to be off to the left there. *[Exhibit 3]*

So what they've done is make it so that we would have parking off of Municipal Way, and then you can see that sample pad site, 3,600 square foot pad site, where we would be able to have future office space. In addition, Commissioner Anaya, you had requested some type of signage – I can't think of the name of the type of sign you were looking for, but something like we have off the fairgrounds, and we've provided in the budget and on this site – it could either be done at the corner where Municipal Way is, or it could be up on the other corner.

So under the current design and what we are going out to bid for is the actual fire station facility and this parking configuration, and then also we have place for and funding for a County sign, and then a future site for any additional place if you would want to put something there.

COMMISSIONER ANAYA: Madam Chair.

CHAIR STEFANICS: Yes, Commissioner Anaya.

COMMISSIONER ANAYA: Madam Chair, on Municipal Way, what is the Town of Edgewood doing right now? I know they're working on the road but are they going to build a building there right now?

MS. MILLER: Madam Chair, Commissioner Anaya, my understanding is that they are going to start construction over on that other side of Municipal Way, that they're looking at, I think their animal shelter and another facility. Dave might have more current information.

CHIEF SPERLING: Madam Chair, Commissioner, from what I understand they're working on developing their public works facility back on the left hand side of Municipal Way.

COMMISSIONER ANAYA: Thank you, Madam Chair. Ms. Miller, thank you for taking another look. I know we had a long discussion about it, but thank you for taking a look at some possible options. I appreciate it.

CHAIR STEFANICS: Thank you. Commissioner Vigil.

COMMISSIONER VIGIL: This is probably for Mark. What's ARRA? American Recovery and Reinvestment dollars? What's ARRA?

MR. LEIGLAND: Madam Chair, Commissioner Vigil, you're exactly right. It's America Recovery and Reinvestment Act. And this is just to replace streetlights with low energy LED street lights.

COMMISSIONER VIGIL: So those are dollars we've received from that source?

MR. LEIGLAND: Madam Chair, Commissioner Vigil, exactly. These projects – everything on here are actually projects that are in progress. So we received the funds, we've awarded the contract, and the contract is in process.

COMMISSIONER VIGIL: Okay. So I really need to have all these acronyms explained. What's TL6S Lamy Junction Transmission Line?

MR. LEIGLAND: Madam Chair, Commissioner Vigil, so the first lesson is I'll try to take away the acronyms to make it easier to understand what's on here. TL6S, that is the name of the waterline that runs from Eldorado to Rancho Viejo and this just refers to the two designs that this Board has approved, so both those designs or contracts are in progress. And then so the Lamy Junction is the second half of that waterline project.

COMMISSIONER VIGIL: Okay. It would have been helpful just to put water, because T1 lines and transmission usually mean fiberoptics or some of that nature. So thank you for clarifying that. That's it, Madam Chair.

CHAIR STEFANICS: Thank you. Anything else on this report?

COMMISSIONER MAYFIELD: Madam Chair.

CHAIR STEFANICS: Yes, Commissioner Mayfield.

COMMISSIONER MAYFIELD: Thank you, Madam Chair. Madam Chair, I apologize. I don't know if this was in my packet or if it was just handed out this morning or this afternoon, and that's fine if it was, but just a quick question. As far as the construction report, did we have any discussion or even if it's in the appropriate place just let me know, but as far as the new courthouse construction – and I guess what I'm getting at is I want to look at the DA's building that's adjacent to the courthouse and just see if there has been any provisions in place for additional security for the DA's building with the new courthouse coming on line.

CHAIR STEFANICS: Okay. This is in the – the first question you had, the report is in your packet, and the second one is regarding security between the courthouse and the DA's building and whether or not we could plan on some extra security cameras or whatever. Thank you. Mr. Leigland.

MR. LEIGLAND: Madam Chair, Commissioner Mayfield, two points on that. One is yes, we can and we are in the process of modifying the large courthouse complex to address that and also on the list of the capital improvement list that we just presented you there's also improvements to the DA complex there. So we're addressing it from two different sides.

COMMISSIONER MAYFIELD: Okay. Madam Chair, thanks. I didn't ask that question when you presented that capital package but I didn't see security. So it's definitely on here.

MR. LEIGLAND: Madam Chair, Commissioner, it encompasses security as well as architectural and mechanical and other things.

COMMISSIONER MAYFIELD: That's all I had, Madam Chair. Thank you.

CHAIR STEFANICS: Thank you. Anything else from the Commission on this report?

MS. MILLER: Madam Chair, also, I know there was a request for bringing in projects that are in the design stage and the planning stage, so we are working on adding those as a project even gets funding for planning or design, it would get on here. We need to modify the database again.

MR. LEIGLAND: Madam Chair, yes. The \$11 million that was just approved, next month's report will list all those projects.

CHAIR STEFANICS: Thank you. Yes, Commissioner Anaya.

COMMISSIONER ANAYA: Madam Chair, that's not just an addition to the quick start. That's all the projects, and the reason that I've asked for that in the past is because Mr. Ross informed us that we need to be cautious about items that are brought up. So items that are requests that we have I'd like to ask for status and if they're on the list and I can do that. If they're not then I have to notice every single one and this was a way to expedite that. So thank you.

CHAIR STEFANICS: Thank you.

XII. C. Human Resources Monthly Report for May 2012

MS. MILLER: Madam Chair, in your packets is the HR report, the statistics for the month of May. And during the month of May we had the open/switch enrollment for health benefits for our employees, and it gives the employees the opportunity to change their current coverage or enroll if they don't currently carry insurance. During that time HR process 89, open or switch enrolment forms. Also the fire cadet testing was conducted in May and we had 47 applicants, 14 passed all the requirements and five were hired. And then we had, as you note earlier, two employees graduate from the Santa Fe Community College working adults program. And the other HR statistics are attached if you have any questions.

CHAIR STEFANICS: So, Ms. Miller, my question is 89 new people signed up for health insurance.

MS. MILLER: Or switched enrolment.

CHAIR STEFANICS: Or switched enrolment. How many -- and Bern, you might need to come up to answer this, Ms. Salazar. How many employees do we not know if they're covered? And I'm trying to see if that's listed anywhere on this spreadsheet anywhere.

MS. SALAZAR: Madam Chair, that's not listed on your spreadsheets but I can bring that forward to the next meeting of how many are not covered. And with the budget that you approved and the changes to the insurance we're currently working with the

employees who don't have coverage who are eligible to receive it. We worked with the state and they did allow for a special open enrolment for these employees to jump into our insurance plans, that make less than \$30,000. So I'll be bringing you a report for the month of June in the July meeting.

CHAIR STEFANICS: Okay. Thanks very much. Anything else, Commissioners, that you'd like to ask about the HR report? Anything, Commissioner Mayfield? Okay.

MS. MILLER: Madam Chair, I just had a couple other informational items real quick. I just had this month that I don't think I had a chance to tell you, that we did receive a CDBG grant. I got a letter from the Local Government Division that we did receive a CDBG grant of \$424,759 for the CDBG project which was the Glorieta water system improvements. So we did receive a grant based on our application. So we've been very successful with all our Water Trust Board applications and CDBG which is good news and we'll endeavor to make sure that we do not lose any of the funds.

And then also we were awarded a juvenile adjudication fund grant from DFA in the amount of \$30,000 for FY 13 and we also received a \$60,000 appropriation for our teen court program and they just recently signed the grant agreement with the courts for that. So I wanted to let you know those things.

And then also, Los Alamos, I'll get you a copy of this report from Los Alamos National Labs, Kurt Steinhaus provided a report of what's happening in Santa Fe County, and the type of things they're doing in the way of education and economic development in Santa Fe County that you might – and this is just specific to Santa Fe County – and I'll get you a copy of this so you can see what the labs are doing in our county.

CHAIR STEFANICS: Thank you. Yes, Commissioner Vigil.

COMMISSIONER VIGIL: I just wanted to thank our County Manager, because I just learned from a member of the Water Trust Board how your tenacity had a lot to do with the fact that these grants were awarded. I know that it was necessarily explained to me based on the La Bajada situation, and I'm not sure when that happened and what you're reporting today, but I did learn specifically from one of the Water Trust Board members that your tenacity is phenomenal. It's made such a wonderful difference. I know that your ability to know how to work through that board has enhanced our ability to gain those grants. Thank you very much.

CHAIR STEFANICS: Thank you. Anything else, Ms. Miller?

MS. MILLER: No.

COMMISSIONER MAYFIELD: Madam Chair.

CHAIR STEFANICS: Yes, Commissioner Mayfield.

COMMISSIONER MAYFIELD: Madam Chair and Katherine, thanks for the update. But real quick, as far as the Los Alamos update, one thing that I heard in conversations with their County Manager up there, just to verify if there are any Los Alamos National Laboratory properties that are within Santa Fe County in that area, and maybe if there could be some potential GRT that we're losing out on. So if you could just maybe follow up on that I would appreciate it.

MS. MILLER: Okay. I'll look into that.

COMMISSIONER MAYFIELD: Thank you. Madam Chair, I'm going through airport security right now so I will call back in for the 5:00 meeting.

CHAIR STEFANICS: Well, Commissioner Mayfield, we might move things so let's just wait a minute. Ms. Miller, are you finished? Okay. So, Mr. Ross, let's revisit the agenda again. Commissioners, I have been asked to temporarily table XV. A. 1 and to bring it back at another meeting because there needs to be some changes to language. Which only leaves two resolutions.

So I heard the interpretation that we needed to wait until after 5:00 because Matters of Public Concern are noticed for 5:00 pm, and then these items are after 5:00 pm. Can you confirm that or can we move ahead or should we wait?

MR. ROSS: Madam Chair, I don't see any reason why you can't take up Matters from the Commission, Miscellaneous, as Commissioner issue at any time. It's not noticed for any particular time. It's just that one item.

XV. Matters From the Commission

A. Resolutions

1. **Resolution No. 2012-___, a Resolution to Accept for Road Maintenance on Rabbit Road and Willow Back Road within the Oshara Subdivision as Specified on the Final Plat (Commissioner Stefanics) TABLED**

CHAIR STEFANICS: Okay. So we can move ahead but we need to come back at 5:00 for Matters of Public Concern. Okay, so let's go back to item XV. A. 3.

- XV. A. 3. **Resolution No. 2012-79, a Resolution Supporting Inclusion of the Town of Edgewood as a Member of the North Central Regional Transit District [Continued from page 26]**

CHAIR STEFANICS: We had started having – I think we had a motion. I'm not sure. We had the – the resolution number has to change though. So was there a motion on Resolution No. 2012-79? Okay. Is there further discussion on Resolution No. 2012-79? This is having Edgewood as a member on the NCRTD. It would be a recommendation. The board itself would have to vote on it. No further discussion?

The motion passed by unanimous [4-0] voice vote with Commissioner Holian abstaining.

- XV. A. 2. **Resolution No. 2012-80, a Resolution Requesting That County Open Lands, Trails and Parks Advisory Committee (COLTPAC) Develop and Bring Forward a Volunteer Plan for County-Owned Open Space and Trails**

SFC CLERK RECORDED 08/01/2012

CHAIR STEFANICS: Mr. Hogan, do you have any comments before I go to public comments?

MR. HOGAN: Madam Chair, no. I'll stand for any questions. I just wanted to be available. And I did want to let you know that the member of COLTPAC that we were hoping to have here today in case we had any questions has not arrived yet, so I'll just have to answer questions in his place.

CHAIR STEFANICS: Okay. Members of COLTPAC actually contacted me and expressed interest and indicated they've been talking about wanting to help create a volunteer program over the past few years. This is not to take away any authority of the staff; it is simply to ask COLTPAC in the next six months to come back with some recommendations for a volunteer program that we could hear about and consider. And in our budget, and I think Ms. Miller, we budgeted for a new half-time person for COLTPAC, so this in fact their recommendations could impact what we do in the future. So that was my intention, to have them look at a volunteer program, make recommendations, so that we all could hear about it. Questions, comments? Commissioner Holian, then Vigil.

COMMISSIONER HOLIAN: Thank you, Madam Chair. I just want to say that I'm in strong support of this and I also think that it's very important that the County actually do hire a volunteer coordinator because in order for it to be able to work we need somebody who oversees it. I don't really think that COLTPAC can do that as well.

CHAIR STEFANICS: Thank you. Commissioner Vigil.

COMMISSIONER VIGIL: I couldn't agree more with Commissioner Holian. That volunteer coordinator is a critical component of this. There's two ways that this can occur. One is by having that volunteer coordinator somebody is going to have to staff this, look at what's available out there. How we've been able to handle most of these is through contractors who solicit assistance from the Corps, particular entities and that's just sort of as needed or as available. In order for something to be really sustainable in terms of this I think you really need to look at stewardship programs. And stewardship programs with regard to the areas that need to be assigned for this volunteer.

So I've been looking at a stewardship program for quite some time and I actually had hoped that we might be able to come up with one for the Agua Fria Traditional Historic Village, the San Ysidro Crossing, even the Romero Park, that kind of thing. Because that community was geared up to provide stewardship. So maybe part of the planning process is to identify where stewardship programs could actually be identified and implemented and get buy-in from communities that might be able to work through this. And that might mean identifying segments of our open space and trails where those stewardship programs could be associated.

Other than that I think what this could also do is just provide for volunteerism, but you'd have to schedule that, you'd have to identify priorities in terms of that. I guess the idea behind this is to make it happen and I totally agree that in order to make it happen you need to get some kind of a volunteer coordinator and steward designer/planner who might be able to implement this. That's it. Thank you. Just a comment, Mark.

CHAIR STEFANICS: Thank you, Commissioner Vigil. I'd like to respond to that. There are several models. I'm glad you brought up the steward program. The Volunteers

for the Outdoors, the National Park Service has one. I've talked to several volunteers within Santa Fe County already and they have a milieu. They have five to ten different kinds of volunteer structures that they could look at. So they are excited about having the opportunity to vet this and present and discuss, so I think it's supporting our COLTPAC in a new activity. Other comments, questions? Commissioner Anaya or Commissioner Mayfield?

COMMISSIONER ANAYA: Madam Chair.

CHAIR STEFANICS: Yes.

COMMISSIONER ANAYA: Madam Chair, I believe – is Mr. Pallin still the chair of the COLTPAC committee? Sam Pallin?

MR. HOGAN: I think that's correct. I'm not sure.

CHAIR STEFANICS: Yes. Beth is here, nodding her head yes.

COMMISSIONER ANAYA: He has always been an avid supporter of wanting to get more active in these projects and getting volunteers, so I think he's behind it and supporting it as the chair as is the committee, so I'm supportive of doing that and moving forward to actually getting some volunteers out there and utilizing the open space, which is something I get a lot of feedback on – people that want to actually use it but we can't yet because we're not ready. So I think the volunteers will help us get there. Thank you.

CHAIR STEFANICS: Thank you. Anything else from the Commissioners?

COMMISSIONER HOLIAN: Madam Chair, I move for approval.

CHAIR STEFANICS: I'll second.

COMMISSIONER HOLIAN: Do we need public comment?

CHAIR STEFANICS: Yes. I thought I asked but maybe not. Is there anybody here for public comment on this Resolution No. 2012-80, a resolution requesting that County Open Lands, Trails and Parks Advisory Committee develop and bring forward a volunteer plan for County-owned open space and trails? Seeing no public comment, we have a motion; we have a second.

The motion passed by unanimous [5-0] voice vote.

XV. C. Commissioner Issues and Comments – (Non-Action Items)

CHAIR STEFANICS: Commissioner Holian.

COMMISSIONER HOLIAN: Thank you, Madam Chair. First of all I would just like to congratulate Erle Wright who earned the designation of New Mexico Certified Public Supervisor, through the NM EDGE program. I think that is really to be commended. I would also like to commend our Fire Department for getting control of the west Arroyo Alamo and Rio Vista Run fires. Those could have gotten out of control so easily and they were just limited to a few acres, and I wonder if Chief Sperling would be willing to just sort of give us an update.

CHIEF SPERLING: Thank you, Madam Chair, Commissioner Holian. Both fires are out. We had crews up on both yesterday, checking for hot spots and making sure that both were completely cold. The crews did an outstanding job in conjunction with resources

from the US Forest Service, the BLM, State Forestry. We had folks from Española there assisting us and quite a few Santa Fe County firefighters from throughout the northern region as well as command staff.

I think it's really a testament to the Santa Fe County Fire Department and our volunteer and career staff when we handle two very significant wildland fires that occurred almost simultaneously, luckily relatively close together so we could get resources to fire #2 to the scene quickly. But they worked super hard to make sure that these fires didn't extend and destroy any personal residences. Thank you for your support though.

COMMISSIONER HOLIAN: Thank you, Chief and thank you to all the crews. Is the electricity back on, by the way?

CHIEF SPERLING: Madam Chair, Commissioner, yes it is.

COMMISSIONER HOLIAN: Great. Thank you.

CHAIR STEFANICS: Anything else, Commissioner?

COMMISSIONER HOLIAN: No.

CHAIR STEFANICS: Commissioner Vigil.

COMMISSIONER VIGIL: Chief Sperling, while you're up there, could you just restate the importance of the fire hazard situation that we're under right now, and the two resolutions that we've enacted, and then I have another question.

CHIEF SPERLING: Madam Chair, Commissioner Vigil, certainly. Right now we have instituted open burn restrictions. So at the current time we are not allowing any open burning, open flames, campfires, anything of that sort throughout Santa Fe County. We've been doing that now for about three months because of the super dry conditions. We've also instituted a ban on the use and sale of certain fireworks within the unincorporated areas of Santa Fe County. That includes all aerial fireworks and any legal fireworks that you can buy, say, at a local grocery store or something like that. They're restricted to use in those areas that are barren or paved and there's a readily accessible source of water. All fireworks are banned in any wildland area. A wildland area includes any area covered in native grasses, brush, anything of that sort.

So we've done everything that we can, I think, legislatively here to ensure that what we're doing is keeping our folks safe. We have also made a real concerted effort, in conjunction with the County PIO and some of the County Manager's staff to get the word out to our tribal governments and to all the residents of Santa Fe County in every means we can think of, including website advertising to the *New Mexican* to ensure that no one is left behind, that everybody's aware that these restrictions are in place.

COMMISSIONER VIGIL: Thank you. A question with regard to the Solid Waste Management Authority program that allows for green waste to be taken to the landfill on a free day. We actually discussed the possibility of having that done more than once a year. Does the Fire Department actually see a benefit from that program?

CHIEF SPERLING: Madam Chair, Commissioner, absolutely. I think it's evident in some of our wildland fires, what is really getting us is the accumulation of fuel around residences, and anything we can do to encourage private property owners to clean up vegetation around their homes so that a wildland fire does not transmit to their personal residence is critically important. Providing a means for folks to get rid of the waste that they pick up around their homes is very important. We can provide them with guidance and there

are lots of resources available so that people don't feel like they've been left completely alone, but often when it comes to disposing of the waste it's quite a monumental task. So I think that anything that we can do as a County to facilitate that for our private citizens is a good thing.

COMMISSIONER VIGIL: It would make sense to me. We were discussing options with regard to having one in the spring and one in the fall, it seems to me that it makes more sense to me that if we're going to include another one to have it during high, peak fire season. But I'll defer to you with regard to your response to that.

CHIEF SPERLING: Madam Chair, Commissioner, I would think that spring season is a great time for people to get out and clean up around their yards and to really get into the fire-wise attitude. I would hesitate about encouraging people to get out during our current conditions, for instance, and operating chain saws or other machinery, because honestly, right now, in many areas we're a spark away from a fire. So I think those times of the year when things have cooled off a little bit, spring in particular but also during the fall, would be most appropriate.

COMMISSIONER VIGIL: Okay. Thank you very much. Madam Chair, that's it.

CHAIR STEFANICS: Thank you. Commissioner Anaya.

COMMISSIONER ANAYA: Thank you, Madam Chair, I did congratulate the Commissioners on their successful election. I wanted to personally congratulate Commissioner of the PRC-elect, Valerie Espinoza. You've been a good County Clerk and will continue to be and I just wanted to congratulate you on your successful election. You're welcome to say a few words if you like.

VALERIE ESPINOZA (County Clerk): Thank you. I just want to thank you and it's been a pleasure serving over the last eight years as County Clerk for you. And you're going to inherit a good clerk with Geraldine as well.

CHAIR STEFANICS: Thank you.

COMMISSIONER ANAYA: Thank you, Commissioner-elect and I know we'll probably have an open door to be able to raise our concerns and issues we have.

I also wanted to ask - I know we've been going back and forth on the City of Santa Fe discussion. Are we finally firm on the date?

CHAIR STEFANICS: Yes. Ms. Miller, don't we have a meeting on July 19th?

MS. MILLER: Madam Chair, Commissioner Anaya and Commissioners, yes. We have it scheduled for July 19th at 5:30.

CHAIR STEFANICS: Till?

MS. MILLER: Till eight.

CHAIR STEFANICS: Till eight. So that's 2 ½ hours. Okay. So I believe that four out of the five Commissioners will attend. Commissioner Holian has to be out of state. Correct? And we've heard from everybody else, Ms. Miller?

MS. MILLER: Madam Chair, yes. I don't know specifically. I do believe most of the City Councilors will be there. That's the date that the City Manager came back with me and said the Mayors and Councilors could make that date. I have not heard that any of them can't so to my knowledge, it's the eight Councilors and the Mayor and the four of you that can make it.

CHAIR STEFANICS: Thank you.

MS. MILLER: It will be on annexation and City-County, probably RECC, transit. Those were the things that we had come up with. I don't know if you have any requests for additional items, but – and RPA.

CHAIR STEFANICS: Well we felt that the agenda had to be limited for this first meeting, that we would discuss how often we would meet and what the topics for the next meeting would be. So we specifically wanted this to be limited to like two, three items plus planning for the future.

MS. MILLER: And Madam Chair, that's what I was saying. Basically, all we had was some discussion on where we were on annexation, on the RPA, because that's how the Commission and Council have been meeting, but that hasn't happened since last November.

CHAIR STEFANICS: Ms. Miller, I don't believe that was it. I think it was RECC and annexation, and topics for others. The Mayor of the City of Santa Fe appoints his chairs of his committees and I think that is a discussion to have with the Mayor about the RPA.

MS. MILLER: Well, I think – I was going to say, that's how the –

CHAIR STEFANICS: Not the City Council.

MS. MILLER: Has been meeting with the Council, so it would be that discussion I think of what you're talking about of how would we then meet.

CHAIR STEFANICS: Well, I think that puts the Mayor on the spot. The Mayor has the authority to appoint his Councilors to different committees. We do this differently. And so what that would be doing is challenging the Mayor in front of his entire City Council if we bring this up. I think this is an offline discussion to have with the Mayor. If he wants to respond to the RPA that day, but to put him on the spot when that is his authority – our choice of committees and commissions is different here. We self-select. At the City the Mayor appoints.

COMMISSIONER ANAYA: Madam Chair, on this point.

CHAIR STEFANICS: Yes.

COMMISSIONER ANAYA: And maybe I just – I'm confused about it. But I thought the discussion relative to the RPA wasn't necessarily revolved around the appointments but the actual issues associated with the RPA. So isn't that what we were going to talk about? We weren't going to talk about the Mayor's authority on the RPA but we were going to have discussion about the RPA and its usefulness as a structure. That's what I gathered. Not compromising or trying to override the Mayor's authority. Isn't that where we were headed?

MS. MILLER: Madam Chair, Commissioners, that's what I thought. That was an original request when we asked to have a meeting to talk about those three things essentially, and it was whether we continue with the structure of the RPA or some other form in order to meet.

COMMISSIONER ANAYA: Right. So I think, Madam Chair, it wasn't about his authority. I actually, Madam Chair, I think it's important that we have the dialogue, not about his authority as Mayor but as a structure, the usefulness of the Regional Planning Authority and whether or not it's outlived its course and we need to modify it or what other

REC'D CLERK RECORDED 08/01/2012

potential things we might do. So I don't see it as putting the Mayor on the spot; I see it as a dialogue about the institution of the RPA and do we continue it or not, essentially.

CHAIR STEFANICS: So, Ms. Miller, why don't you put together the agenda, including that and have – make sure the City vets it and then if it's all acceptable we'll move forward with that.

MS. MILLER: Madam Chair, Commissioners, that's what we've been doing is running a draft back and forth between the City Manager, who is checking with the Mayor, and here, and I'll present that to you as well. We haven't solidified an agenda, but those were the three things that had come up as discussion items.

CHAIR STEFANICS: Okay. Commissioner Anaya, you still have the floor.

COMMISSIONER ANAYA: Madam Chair, a few other things. I was part of a discussion on the radio the other day with existing Representative Hall for the area in La Cienega and there was a discussion with community leaders in La Cienega and La Cieneguilla and La Bajada. And what I left from the conversation thinking is that we need to figure out a way to convey the information – the things we've done to these community leaders more often, about funding that we've received, projects that we're doing and the progress that we've made. If any of you heard the conversation and you were not familiar with the work that the County has done you might feel that we hadn't done anything in some of those points within the conversation.

Some were very positive tied to La Bajada and tied to well monitoring and the County Extension. And some were not so positive. And that's the reality of communications and there's always going to be concerns and there's always going to be times when not everybody is happy, but I think there's a lot that's been done in the last decade in particular throughout Santa Fe County and if we could work together figuring out a way to convey some of that information directly to those community leaders on these projects, working with our PIO and others to help convey that information, specifically on water, because it's such a sensitive topic. There's numerous things that the County has done tied to the Buckman Direct Diversion project and not utilizing the Valle Vista well any longer and drawing from that aquifer, and the extensions that have taken place of water utility. Numerous things, and I think we need to maybe continue. We piled a good list in the annual report, but maybe we can build on that list, not just in this region but the entire county.

I say that. I said that publicly on the radio but I'll continue to provide that feedback to you as the Manager and to the public to make sure we articulate what we're doing.

The other discussion that came about had to do with ordinances that we have in place and whether or not we're enforcing the ordinances we have on the books. So it's probably going to be a pretty large endeavor to look at our ordinances, but the feedback was we have many, many, many ordinances that we never enforce, or it was implied, and I don't believe that that's factual. Specifically tied to when and how people tie into the County utility. So if you could provide me some feedback as to the requirements associated with how close people have to be to the utility and what specifically our ordinance says that people have to do to hook into the utility. There was a lot of discussion on that particular topic. So that's a heads-up and something we can continue to have dialogue on.

I would like to do a little road tour. I have a list of roads in District 3 that I want to cross-reference with the existing capital list and I would like to do a tour of the roads in

District 3 with Mr. Leigland and Mr. Martinez and yourself and anybody else who'd like to join in. But I just wanted to put these roads out there as roads that I'm seriously looking at and getting feedback on as priorities. Wide Lakes Road, Fairview Road, various roads. Small sections in Galisteo, Cerrillos and La Cieneguilla and La Cienega, and roads in the Highway 14 area west of Highway 14. Thank you, Madam Chair.

CHAIR STEFANICS: Thank you. Commissioner Mayfield. Okay. I have nothing except to say to everyone to please have a safe, happy Fourth of July next week and to watch your neighbors, fires, etc. And I know children might be disappointed but there are ways of celebrating with water balloons and hoses and some other things. We talked about this last summer, but hopefully communities and the fire education department will think of other ways for communities to celebrate. And I hope our staff have a good time off. Yes, Commissioner Vigil.

COMMISSIONER VIGIL: Yes, I totally agree with you, Madam Chair. What a good message to keep out there, and that's why I asked Chief Sperling to restate it. I just have a recommendation for Commissioner Anaya, that has been very effective for those of us who have been sitting Commissioners, and it truly is representative of open lines of communication with your constituency. I know we all do e-news or emails or things of that nature to our constituency and that is a really good way of communicating updates and projects or programs and even constituency services have been utilized to help that out. So there are venues that you can actually take the initiative of in communicating through your constituents or to whoever would be interested in hearing of it. And certainly the internet is something we've all taken advantage of.

So the lines of communication and keeping them open so that folks know what's going on, I think we have a responsibility for that also.

CHAIR STEFANICS: Thank you. There were two other very brief things I wanted to bring to everybody's attention. The Santa Fe 2012 Bikeways and Trails Map was put out by the MPO, the Metropolitan Planning Organization. Our staff – it's a City-County group, and also includes Tesuque Pueblo. The staff are located at the City but they have cases of these maps and these are available to take to community meetings or to put out at any public places, so we might, Ms. Miller, want to have some put – I don't know how many of our senior ride bikes but perhaps they would take them to their children or their grandchildren. So there are thousands of these that are available for distribution.

At the canvassing board meeting I did make the comment and I just want to repeat it. I want to thank all the candidates, not just the elected winners, but all candidates. Anybody who chooses to provide their time and energy in running for public office, they certainly are not made rich. I thank them for their interest in public service and congratulations to everyone who was in a campaign.

Before I go to Legal for the executive session, is there anything else from the Commissioners.

MS. MILLER: I just have one question. The next DOT meeting I believe is here in Santa Fe at the convention center.

CHAIR STEFANICS: Yes. It is on July 19th. It just so happens that on July 18th and 19th the Federal Highway Administration is actually doing a program audit of our MPO. And they will be in town as well during that meeting to check out how the City, the

County, the tribe is working together and operating procedures. Steve, last night at the MPO meeting I brought up the fact that we operate quite differently than other groups. Like other groups have a contract attorney or have an operating manual, and we don't. So I have asked staff to start working with County Legal and City Legal on clarifying some issues about that.

The State Department Highway Commission is meeting in Santa Fe the afternoon of July 19th at the Santa Fe Convention Center. It will start with a lunch and then move on. The City Mayor, the County chair and the chair of the MPO will do brief welcomes and comments and then that Highway Commission meets for the afternoon. One of the assistant secretaries at DOT is coordinating with us. The County and the City are putting that meeting together. So we will have early access and input into the agenda.

COMMISSIONER HOLIAN: Madam Chair.

CHAIR STEFANICS: Yes.

COMMISSIONER HOLIAN: Will there be public input at that meeting?

CHAIR STEFANICS: Yes, there is public input. I never can remember if it's at the beginning of the meeting or at the end of the meeting. So the MPO though is asked at that meeting to make comments and to actually do a short presentation on the needs that have been identified from our MPO. The last time that I was chair of the MPO and attended one of those meetings they actually asked us to prioritize the projects. And one of the projects they prioritized they actually did fund. So it's rather important when it comes to your community. Yes.

COMMISSIONER VIGIL: I have a question. So I'm trying to calendar this, Katherine. On July 19th we have the City-County joint meeting. Is that in the morning? It's in the evening. I'm sorry.

CHAIR STEFANICS: So, Ms. Miller, we really need to get all of this on our calendars, so if you could have staff send the invites so it just gets put onto the calendars – our study sessions and our City Council-County Commission, and how will that be noticed? Will it be legals or will it be a boxed ad? The City-County meeting?

MS. MILLER: Madam Chair, I believe that's going to be in legals but it will be both under a City logo and a County logo.

CHAIR STEFANICS: Okay. Anything else?

XIII. Matters from the County Attorney

A. Executive Session

1. Discussion of Pending or Threatened Litigation

2. Limited Personnel Issues

Commissioner Holian moved to go into executive session pursuant to NMSA Section 10-15-1-H (2 and 7) to discuss the matters delineated above. Commissioner Anaya seconded the motion which passed upon unanimous [4-0] roll call vote with Commissioners Vigil, Anaya, Holian, Stefanics, all voting in the affirmative.

[The Commission met in executive session from 4:06 until after 5]

Upon motion and second the Board returned to open session.

XIV. Matters of Public Concern – NON-ACTION ITEMS

XVI. Adjournment

Having completed the agenda and with no further business to come before this body, Chairwoman Stefanics declared this meeting adjourned.



ATTEST TO:
Valerie Espinoza
VALERIE ESPINOZA
SANTA FE COUNTY CLERK

Approved by:

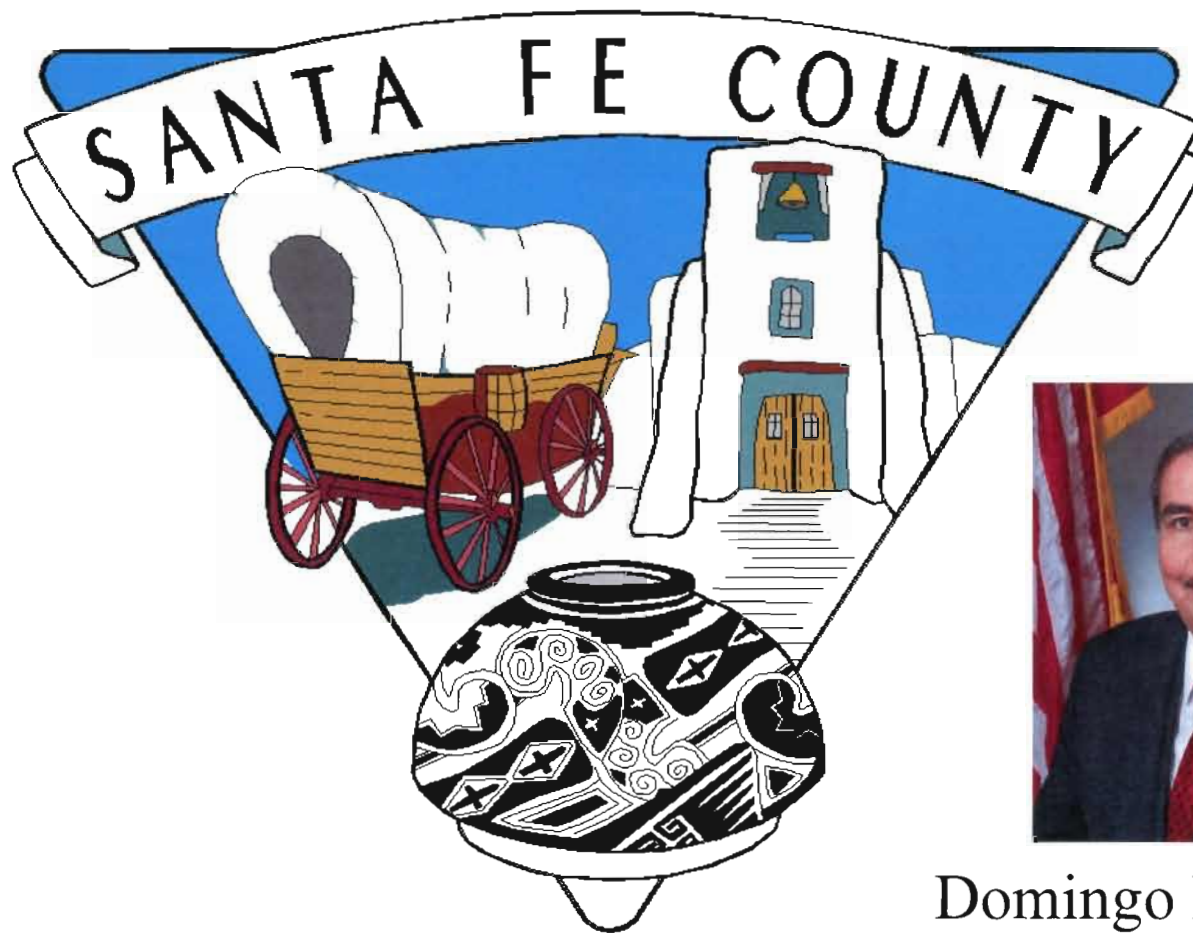
Liz Stefanics

Board of County Commissioners
Liz Stefanics, Chairwoman

Respectfully submitted:

Karen Farrell
Karen Farrell, Wordswork
453 Cerrillos Road
Santa Fe, NM 87501

Santa Fe County Assessor's Office



Domingo P. Martinez
Assessor

2012 ANNUAL REPORT

SFC CLERK RECORDS 10/12

Taxable Valuation Comparison

	2008	2009	Change	% Change
Total Taxable Value	\$6,550,808,648	\$ 6,704,619,684	+ \$153,811,036	+ 2.3 %
Total Res. Value	\$4,774,246,950	\$5,019,708,291	\$245,461,341	+ 5.1 %
Total Non-Res. Value	\$1,776,561,698	\$1,684,911,393	-\$91,650,305	-5.2 %

Taxable Valuation Comparison

	2009	2010	Change	% Change
Total Taxable Value	\$ 6,704,619,684	\$ 6,890,742,053	+ \$186,122,369	+2.8 %
Total Res. Value	\$5,019,708,291	\$ 5,200,890,626	\$181,182,335	+ 3.6 %
Total Non- Res. Value	\$1,684,911,393	\$ 1,689,851,427	+ \$4,940,034	+ 2.9 %

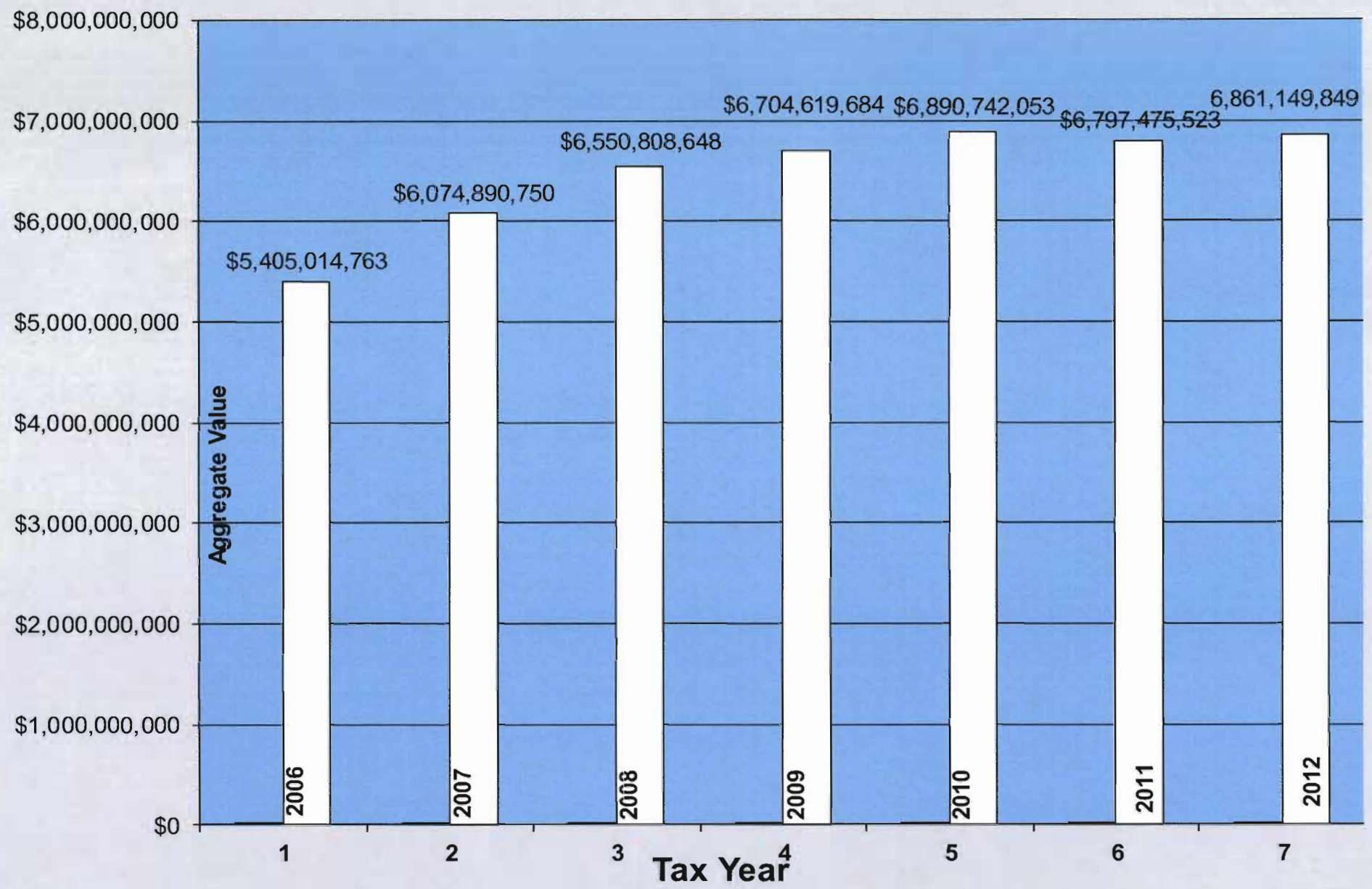
Taxable Valuation Comparison

	2010	2011	Change	% Change
Total Taxable Value	\$ 6,890,742,053	\$ 6,957,915,837	+ \$ 67,173,784	+ 1%
Total Res. Value	\$5,200,890,626	\$5,249,302,433	+ \$48,411,807	+ .93%
Total Non- Res. Value	\$1,689,851,427	\$1,708,613,404	+ \$18,761,977	+1.1 %

	Tax Year 2011	Taxy Year 2012	\$ Change	% Change
Total Taxable Value	\$6,797,475,523	\$6,861,149,849	+ \$ 63,674,326 (\$ 80,058,532 net new) (-\$ 119,178,284 valuation maintenance) (\$102,794,078 protested)	+ 0.9% (-1.8%)
Total Res. Value	\$5,217,713,499	\$5,331,371,646	+ \$ 113,658,147 \$40,469,551 net new \$30,482,417 val. maint \$42,706,179 protested	+ 2.2% (+.60%)
Total Non- Res. Value	\$1,579,762,024	\$1,529,778,203	-\$ 49,983,821 \$39,588,982 net new -\$149,660,702 val. maint \$60,087,899 protested	- 3.2 % (-9.5%)

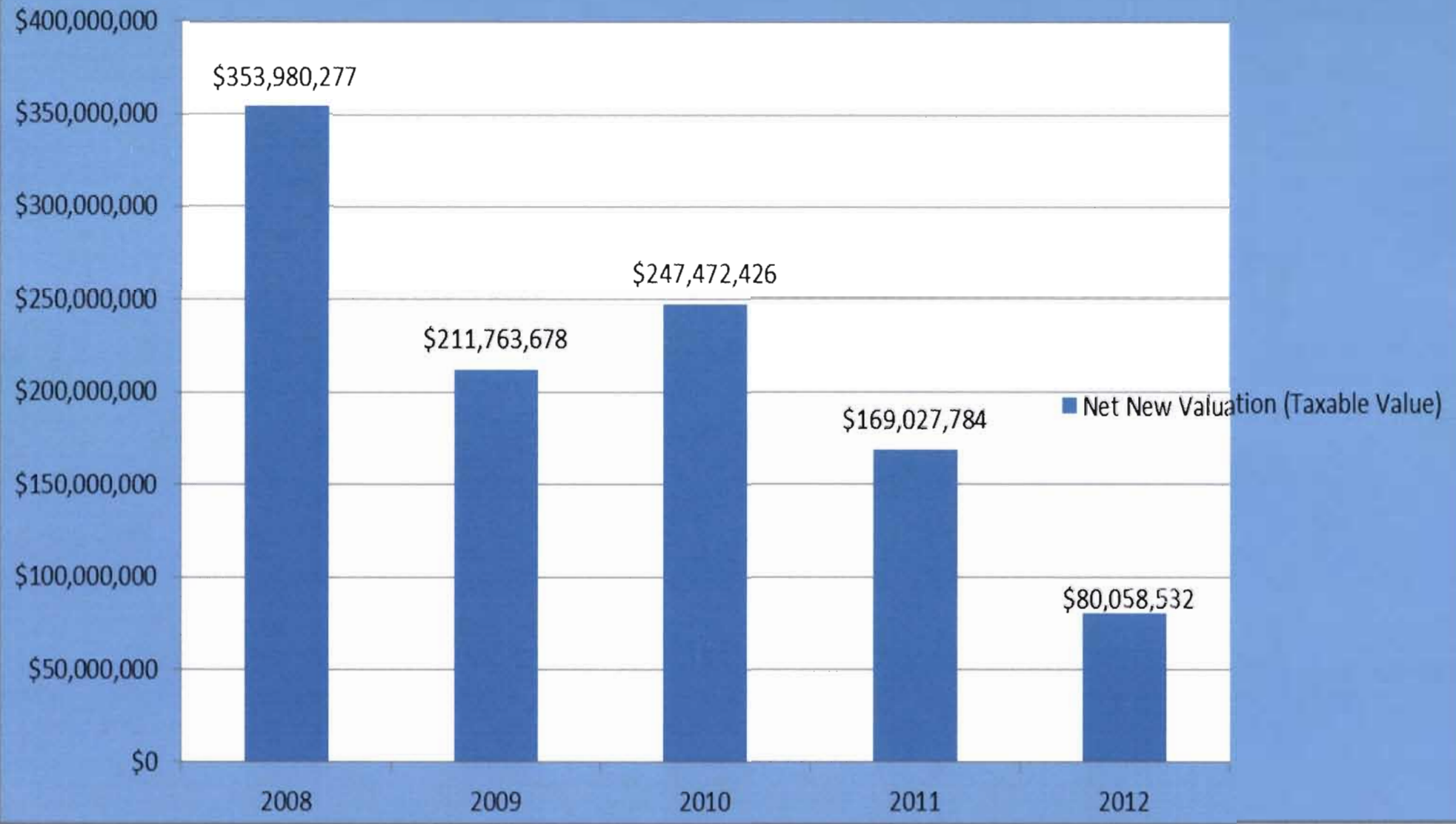


Santa Fe County Taxable Value History





Net New Valuation (Taxable Value)





2012 SALES RATIO STUDY

AGGREGATE STATISTICS: 2011 sales Vs. 2012 values

Criteria for all sales

Standard Deviation							33.82
Variance							11.44
Average Dev from Mean							17.21
Average Dev from Median							16.75
Coefficient of Variation							33.27
Coefficient of Dispersion (Mean Ratio)							16.93
Weighted (Aggregate) Mean							98.90%
Price Related Differential (PRD)							102.81%
Mean Ratio					Minimum	0.43%	101.68%
					Maximum	722.81%	
Sample Size					1423	From	\$ -
						To	\$ 5,100,000
ALL PROPERTIES							
Date Range					From	January-11	
					To	December-11	
Sample Size					1423	From	\$ -
						To	\$ 5,100,000
Median Ratio					Minimum	0.43%	98.38%
					Maximum	722.81%	
COD (Median Ratio) (All Properties)							17.02%
Standard Deviation							33.82%

OMITTED PROPERTIES ADDED TO TAX ROLLS BY ASSESSOR'S OFFICE

Tax Year Entered	Net Taxable Value Added (approx.)	Total Tax Amount
2012	\$ 42,603,000	\$937,261
2011	\$ 55,962,000	\$1,231,166
2010	\$ 22,000,000	\$492,111
2009	\$57,000,000	\$1,257,093
2008	\$ 13,600,000	\$299,137
2007	\$26,900,000	\$592,017
Total Tax Dollars Added	\$ 4, 808,785	



FY 2013 Quick Start GRT-Funded Capital Projects



FY 13 GRT Funded Projects	Project Cost
Community Service	
Highway 14 Area Senior / Community Center Design & Land Acq.	\$ 350,000
Eldorado (Vista Grande) Library Addition	\$ 1,500,000
Ken and Patty Adams Eldorado Senior / Community Center Design	\$ 150,000
Nambe Center Improvements	\$ 20,000
Public Safety	
Fire Department Training Center Development	\$ 1,250,000
District Attorney Complex Energy and Accessibility Improvements	\$ 850,000
Corrections Upgrades	\$ 2,000,000
Public Safety Complex Upgrade Design	\$ 200,000
County Facility	
Old Judicial Courthouse Redevelopment Analysis	\$ 250,000
Administrative Building Computer and Communications Room	\$ 325,000
La Bajada Ranch Immediate Needs and Remediation	\$ 325,000
Open Space	
Santa Fe Rail Trail Segments 2-3 Construction	\$ 821,000
Los Potrerros Open Space Master Plan and Implementation	\$ 260,000
Pojoaque Sports Fields Design	\$ 50,000
Northern Santa Fe County Recreation Fields Planning and Design	\$ 180,000
Romero Park Planning & Development	\$ 100,000
Roads	
Road Project Engineering	\$ 500,000
CR98 Phase II	\$ 1,500,000
Local Government Road Fund Matched Projects (FY13)	\$ 100,000
Commission Priorities / Emergencies (FY13)	\$ 1,000,000
Total FY13 GRT Projects	\$ 11,731,000

Capital Projects by District

DISTRICT 1

Projects Description	Project Cost	District
Pojoaque Sports Fields Design	\$ 50,000	1
Nambe Center Improvements	\$ 20,000	1
Northern Santa Fe County Recreation Fields Design	\$ 180,000	1
Bennie J. Chavez Park Renovation Design and Construction	\$ 259,000	1
Los Potreros Open Space Master Plan and Implementation	\$ 260,000	1
CR 113S River Crossing Improvement	\$ 400,000	1
Vista Redondo Chip Seal	\$ 600,000	1
Northern Santa Fe County Recreation Fields Acquisition	\$ 800,000	1
Pojoaque Sports Fields Construction	\$ 950,000	1
Road Improvements in Northern SF County	\$ 1,000,000	1
CR98 Phase II	\$ 1,500,000	1
Northern Santa Fe County Transfer Station	\$ 2,500,000	1
Commission Priorities / Emergencies	\$ 400,000	1
CR77 (Camino La Tierra) 2" asphalt overlay	\$ 350,000	1 & 2
District Subtotal	\$ 9,269,000	

DISTRICT 2

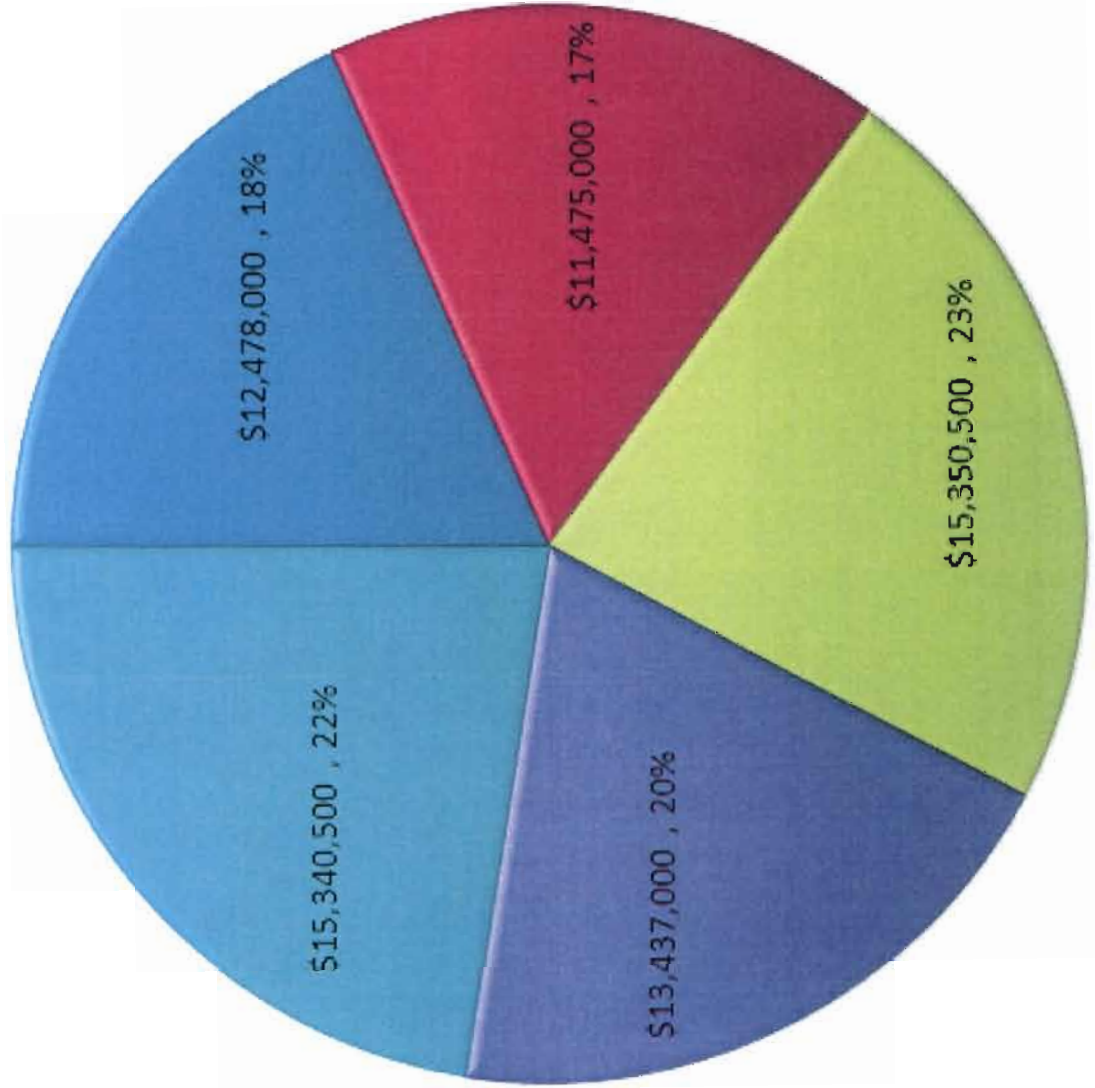
	Project Cost	District
Romero Park Planning and Design	\$ 100,000	2
Nancy Rodriguez Center Upgrades	\$ 300,000	2
Puesta del Sol Chip Seal	\$ 604,000	2
Pinon Hills Chip Seal	\$ 627,000	2
Santa Fe River Greenway: El Camino Real Park Construction	\$ 925,000	2
Romero Park Construction	\$ 1,000,000	2
Santa Fe River Greenway: Frenchy's to Siler Rd. Construction	\$ 3,940,000	2
Commission Priorities / Emergencies	\$ 400,000	2
CR77 (Camino La Tierra) 2" asphalt overlay	\$ 350,000	1 & 2
District Subtotal	\$ 8,246,000	

DISTRICT 3	Project Cost	District
CR 50A Paving	\$ 178,000	3
CR 50F (Entrada La Cienega) 2" asphalt overlay	\$ 200,000	3
Thornton Ranch Open Space Design	\$ 200,000	3
Torcido Loop Paving / Drainage	\$ 405,000	3
CR 54 (Los Pinos Road) All Weather Structure	\$ 500,000	3
Mt. Chalchihuitl Remediation	\$ 676,000	3
CR 20B Base Course	\$ 935,000	3
Stanley Center	\$ 1,200,000	3
Fire Department Training Center Development	\$ 1,250,000	3
CR 55A (General Goodwin Ranch Road) paving	\$ 3,500,000	3
Commission Priorities / Emergencies	\$ 400,000	3
Highway 14 Area Senior / Community Center Design & Land Acq.	\$ 175,000	3 & 5
Highway 14 Area Senior / Community Center Construction	\$ 572,500	3 & 5
Ken and Patty Adams Eldorado Senior / Community Center Design	\$ 50,000	3 & 4 & 5
Ken and Patty Adams Eldorado Senior / Community Center Const	\$ 283,333	3 & 4 & 5
Eldorado (Vista Grande) Library Addition	\$ 500,000	3 & 4 & 5
Quill Water Reclamation Plant-Treatment Improvements	\$ 1,096,667	3 & 4 & 5
District Subtotal	\$ 12,121,500	

DISTRICT 4	Project Cost	District
Puye Road Chip Seal	\$ 140,000	4
Cerros Cantando Sub Chip Seal	\$ 178,000	4
Camino Pacifico Chip Seal	\$ 192,000	4
Glorieta Estates Chip Seal	\$ 200,000	4
Hondo Station Additions	\$ 275,000	4
CR 33 (Old Lamy Trail) 2" asphalt overlay	\$ 300,000	4
CR 67F (La Barbaria Road) paving/drainage	\$ 500,000	4
Glorieta Pass Fire District Substation	\$ 500,000	4
Greater Glorieta Wastewater Collection and Water Reclamation	\$ 900,000	4
Greater Glorieta Water Supply	\$ 1,000,000	4
Bicycle Lane Construction OSFT	\$ 1,500,000	4
Commission Priorities / Emergencies	\$ 400,000	4
Ken and Patty Adams Eldorado Senior / Community Center Design	\$ 50,000	3 & 4 & 5
Ken and Patty Adams Eldorado Senior / Community Center Const	\$ 283,333	3 & 4 & 5
Eldorado (Vista Grande) Library Addition	\$ 500,000	3 & 4 & 5
Quill Water Reclamation Plant-Treatment Improvements	\$ 1,096,667	3 & 4 & 5
SR4NE Connection (Rancho Viejo - Hospital Tanks)	\$ 107,500	4 & 5
Santa Fe Rail Trail Segments 2-3 Construction	\$ 410,500	4 & 5
TL2N (Old Santa Fe Trail Transmission Line)	\$ 425,000	4 & 5
TL6S (Rancho Viejo - Eldorado Connector Line)	\$ 1,250,000	4 & 5
District Subtotal	\$ 10,208,000	

DISTRICT 5	Project Cost	District
Avenida Buena Ventura Paving	\$ 91,000	5
Spruce Street Chip Seal	\$ 156,000	5
Avenida Amistad Paving	\$ 194,000	5
La Cienega Main Station Remodel / Addition	\$ 500,000	5
Herrada Road paving	\$ 900,000	5
NE/SE Connector	\$ 5,000,000	5
Commission Priorities / Emergencies	\$ 400,000	5
Highway 14 Area Senior / Community Center Design & Land Acq.	\$ 175,000	3 & 5
Highway 14 Area Senior / Community Center Construction	\$ 572,500	3 & 5
Ken and Patty Adams Eldorado Senior / Community Center Design	\$ 50,000	3 & 4 & 5
Ken and Patty Adams Eldorado Senior / Community Center Const	\$ 283,333	3 & 4 & 5
Eldorado (Vista Grande) Library Addition	\$ 500,000	3 & 4 & 5
Quill Water Reclamation Plant-Treatment Improvements	\$ 1,096,667	3 & 4 & 5
SR4NE Connection (Rancho Viejo - Hospital Tanks)	\$ 107,500	4 & 5
Santa Fe Rail Trail Segments 2-3 Construction	\$ 410,500	4 & 5
TL2N (Old Santa Fe Trail Transmission Line)	\$ 425,000	4 & 5
TL6S (Rancho Viejo - Eldorado Connector Line)	\$ 1,250,000	4 & 5
District Subtotal	\$ 12,111,500	
ALL DISTRICTS	Project Cost	District
Local Government Road Fund Matched Projects (FY13)	\$ 100,000	All
Local Government Road Fund Matched projects (FY14)	\$ 100,000	All
Public Safety Complex Upgrade Design	\$ 200,000	All
La Bajada Ranch Programming / Design	\$ 200,000	All
Old Judicial Courthouse Redevelopment Analysis	\$ 250,000	All
La Bajada Ranch Immediate Needs and Remediation	\$ 325,000	All
Administrative Building Computer and Communications Room	\$ 325,000	All
Road Project Engineering	\$ 500,000	All
District Attorney Complex Energy and Accessibility Improvements	\$ 850,000	All
Acquisition of Mutual Domestic Water Systems	\$ 800,000	All
Aquifer Recharge and Storage Phase I	\$ 1,245,000	All
Corrections Upgrades	\$ 2,000,000	All
Public Safety Complex Upgrade Construction	\$ 2,500,000	All
Old Judicial Courthouse Redevelopment (pending analysis)	\$ 6,750,000	All
District Subtotal	\$ 16,145,000	
Total All Projects	\$ 68,101,000	

FY13-FY16 Capital Projects by Commission District



- District 1
- District 2
- District 3
- District 4
- District 5

FY 13-FY16 Roads GO-Funded Capital Projects

Roads Projects	Project Cost
NE/SE Connector	\$ 5,000,000
CR 55A (General Goodwin Ranch Road) paving	\$ 3,500,000
CR 54 (Los Pinos Road) All Weather Structure	\$ 500,000
CR 113S River Crossing Improvement	\$ 400,000
CR 50F (Entrada La Cienega) 2" asphalt overlay	\$ 200,000
CR77 (Camino La Tierra) 2" asphalt overlay	\$ 700,000
CR 33 (Old Lamy Trail) 2" asphalt overlay	\$ 300,000
Herrada Road paving	\$ 900,000
CR 67F (La Barbaria Road) paving/drainage	\$ 500,000
Road Improvements in Northern SF County	\$ 1,000,000
Torcido Loop Paving / Drainage	\$ 405,000
Bicycle Lane Construction Old Santa Fe Trail	\$ 1,500,000
Cerros Cantando Sub Chip Seal	\$ 178,000
Camino Pacifico Chip Seal	\$ 192,000
CR 50A Paving	\$ 178,000
Avenida Amistad Paving	\$ 194,000
Avenida Buena Ventura Paving	\$ 91,000
Puye Road Chip Seal	\$ 140,000
Spruce Street Chip Seal	\$ 156,000
Glorieta Estates Chip Seal	\$ 200,000
Vista Redondo Chip Seal	\$ 600,000
Pinon Hills Chip Seal	\$ 627,000
Puesta del Sol Chip Seal	\$ 604,000
CR 20B Base Course	\$ 935,000
Total	\$ 19,000,000

FY 13-FY16 Water and Open Space GO-Funded Capital Projects

Water Projects	Project Cost
TL2N (Old Santa Fe Trail Transmission Line)	\$ 850,000
Aquifer Recharge and Storage Phase I	\$ 1,245,000
TL6S (Rancho Viejo - Eldorado Connector Line)	\$ 2,500,000
Quill Water Reclamation Plant-Treatment Improvements	\$ 3,290,000
Greater Glorieta Water Supply Improvements - Phase 1	\$ 1,000,000
SR4NE Connection (Rancho Viejo - Hospital Tanks)	\$ 215,000
Greater Glorieta Wastewater Collection and Water Reclamation	\$ 900,000
Total	\$ 10,000,000
Open Space / Parks Projects	Project Cost
Mt. Chalcihuitl Remediation	\$ 676,000
Santa Fe River Greenway: Frenchy's to Siler Rd. Construction	\$ 3,940,000
Santa Fe River Greenway: El Camino Real Park Construction	\$ 925,000
Thornton Ranch Open Space Design	\$ 200,000
Bennie J. Chavez Park Renovation Design and Construction	\$ 259,000
Total	\$ 6,000,000

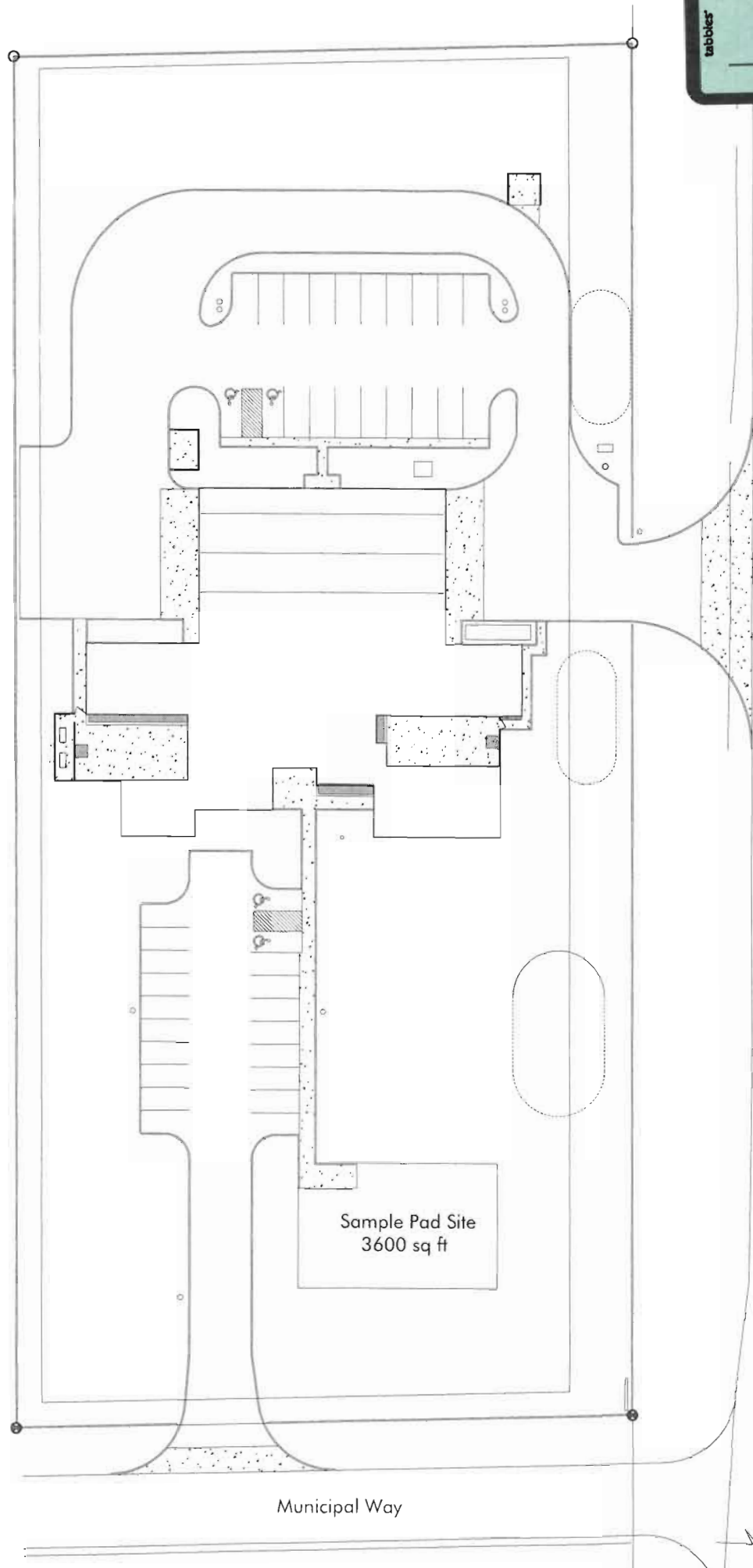
FY 13-FY16 GRT-Funded Capital Projects

Longer Term GRT Projects	Project Cost
Old Judicial Courthouse Redevelopment (pending analysis)	\$ 6,750,000
Highway 14 Area Senior / Community Center Construction	\$ 1,145,000
Nancy Rodriguez Center Upgrades	\$ 300,000
Hondo Station Additions	\$ 275,000
Glorieta Pass Fire District Substation	\$ 500,000
La Cienega Main Station Remodel / Addition	\$ 500,000
Ken and Patty Adams Eldorado Senior / Community Center Const	\$ 850,000
Stanley Center	\$ 1,200,000
Northern Santa Fe County Transfer Station	\$ 2,500,000
La Bajada Ranch Programming / Design	\$ 200,000
Public Safety Complex Upgrade Construction	\$ 2,500,000
Local Government Road Fund Matched projects (FY14)	\$ 100,000
Pojoaque Sports Fields Construction	\$ 950,000
Northern Santa Fe County Recreation Fields Property Acquisition	\$ 800,000
Romero Park Construction	\$ 1,000,000
Acquisition of Mutual Domestic Water Systems	\$ 800,000
Commission Priorities / Emergencies (FY14)	\$ 1,000,000
Total Long Term GRT	\$ 21,370,000

SFC CLERK RECORDED 88/81/2017

tabbles
EXHIBIT
3

SFC CLERK RECORDED 88/01/2012
2102/10/08



Municipal Way

Highway 344

Sample Pad Site
3600 sq ft