

# Gasoline Remediation and Building Protection Measures Status Report, Steve Herrera Judicial Complex

A Presentation To:



Presented By:



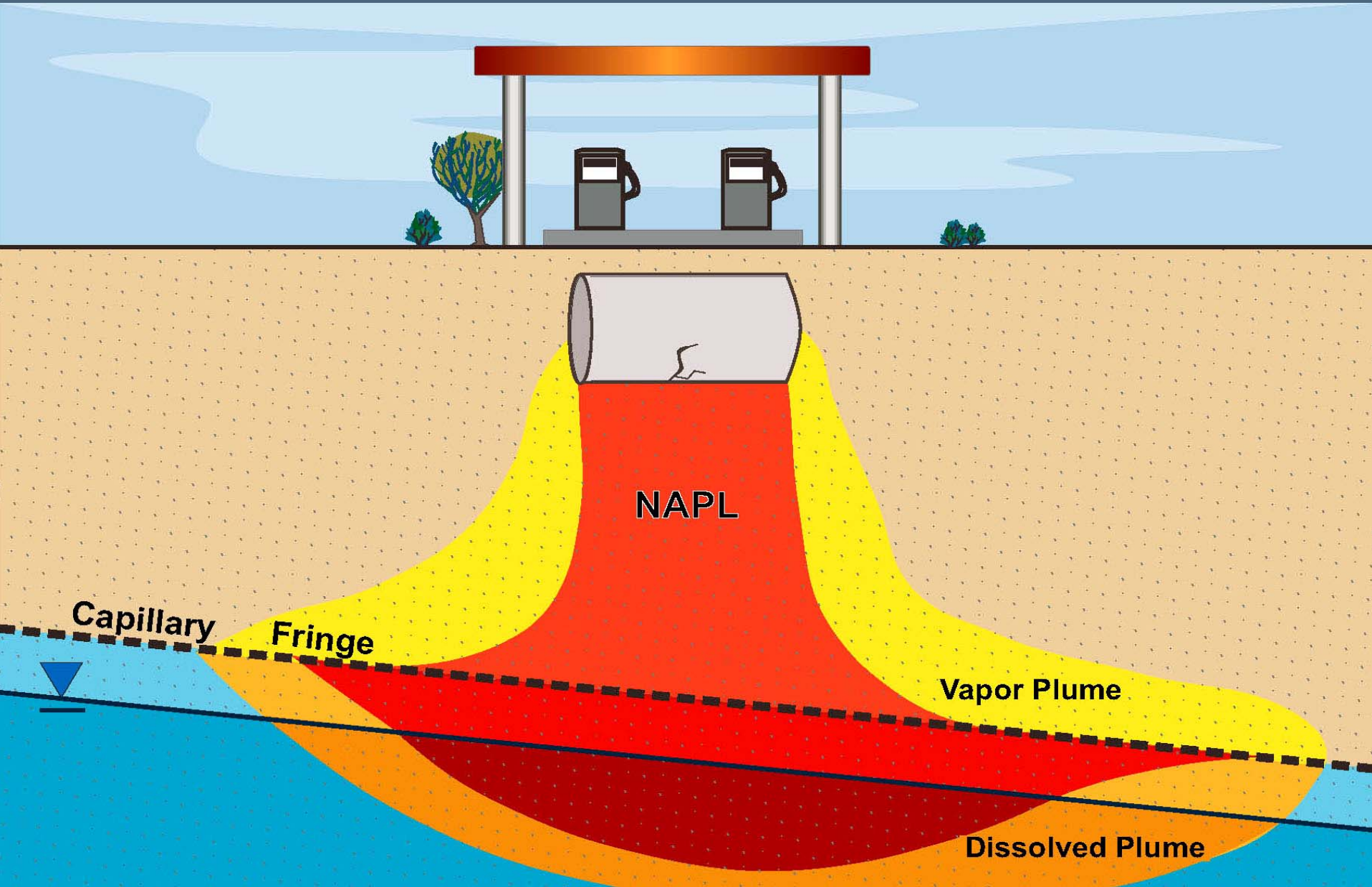
Joe A. Galemore, PG  
Joe Tracy, PG

September 2, 2010

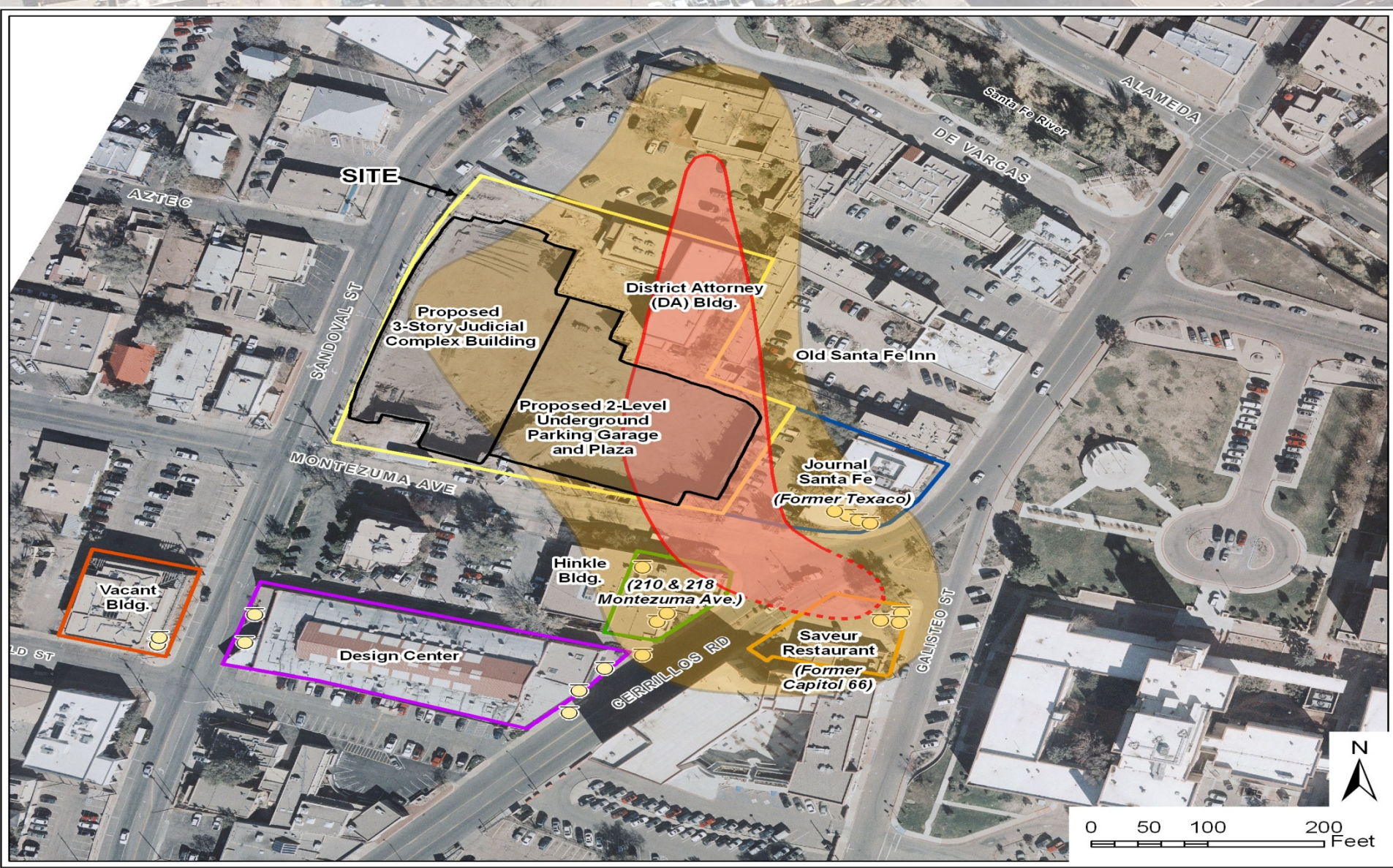
# Presentation Organization

- **What Got Us Here and Status of Remediation (Joe Galemore, INTERA)**
- **Building Protection Measures (Dan Lyons, Bradbury Stamm)**

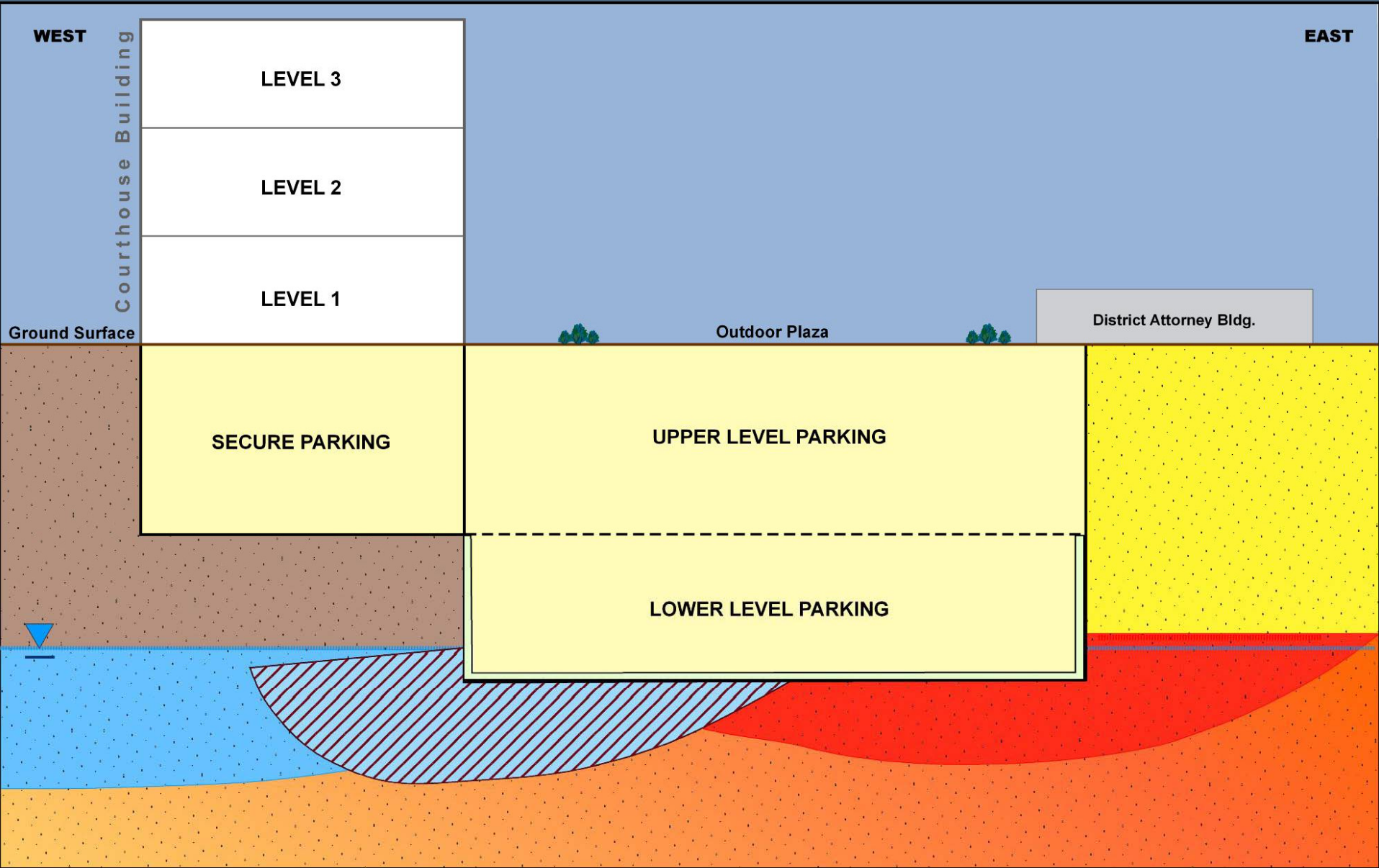
# What Got Us Here



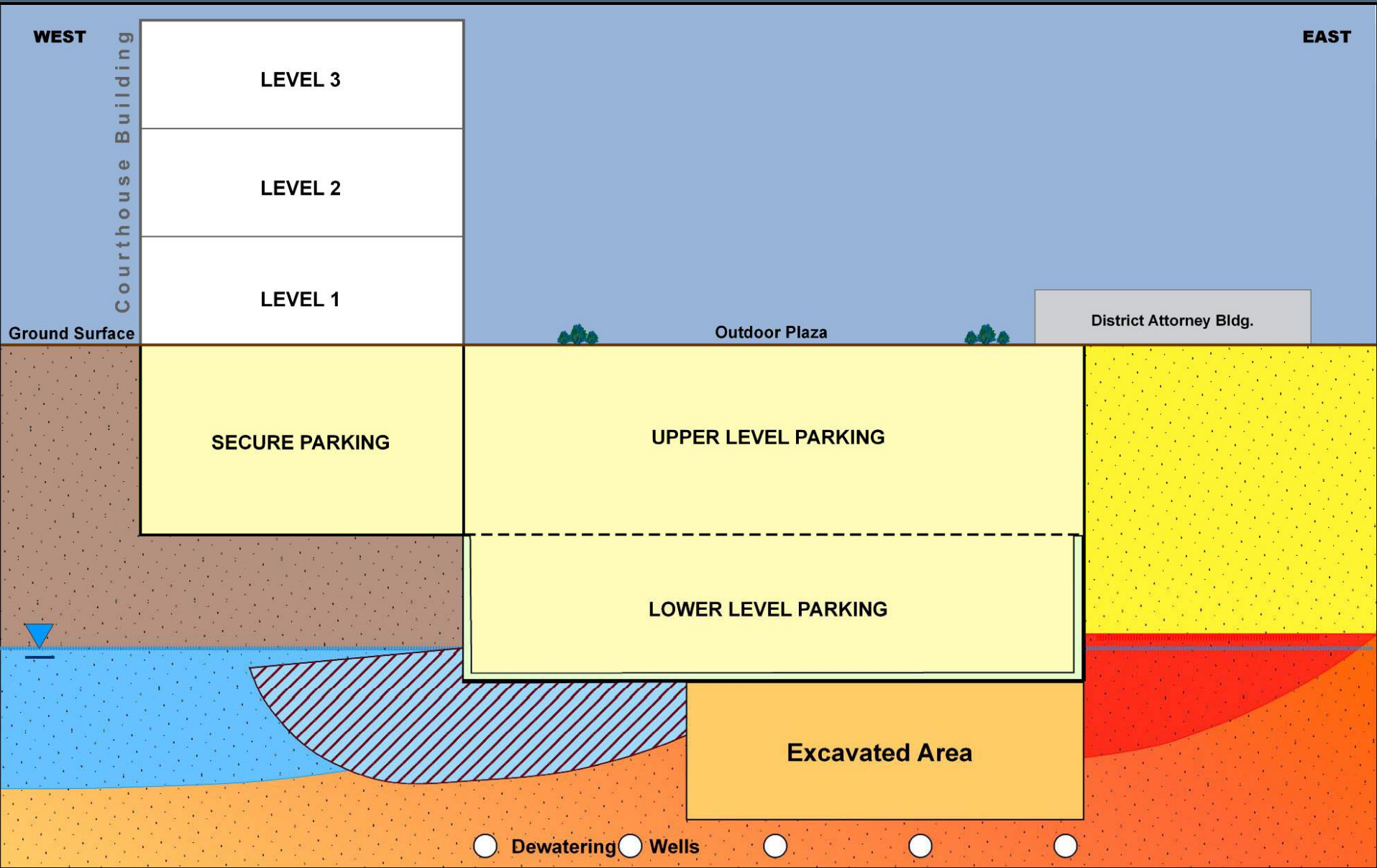
# What Got Us Here



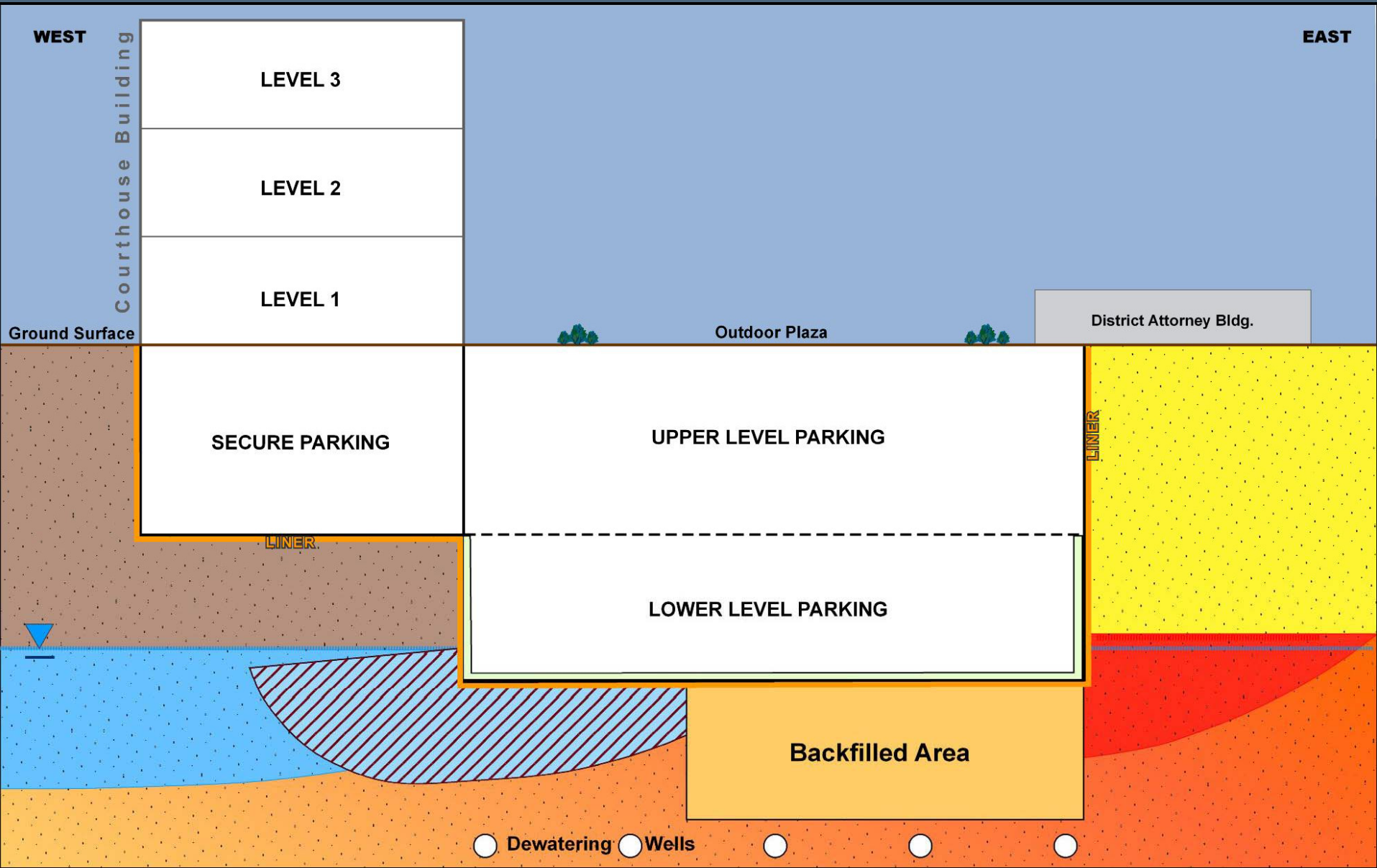
# What Got Us Here



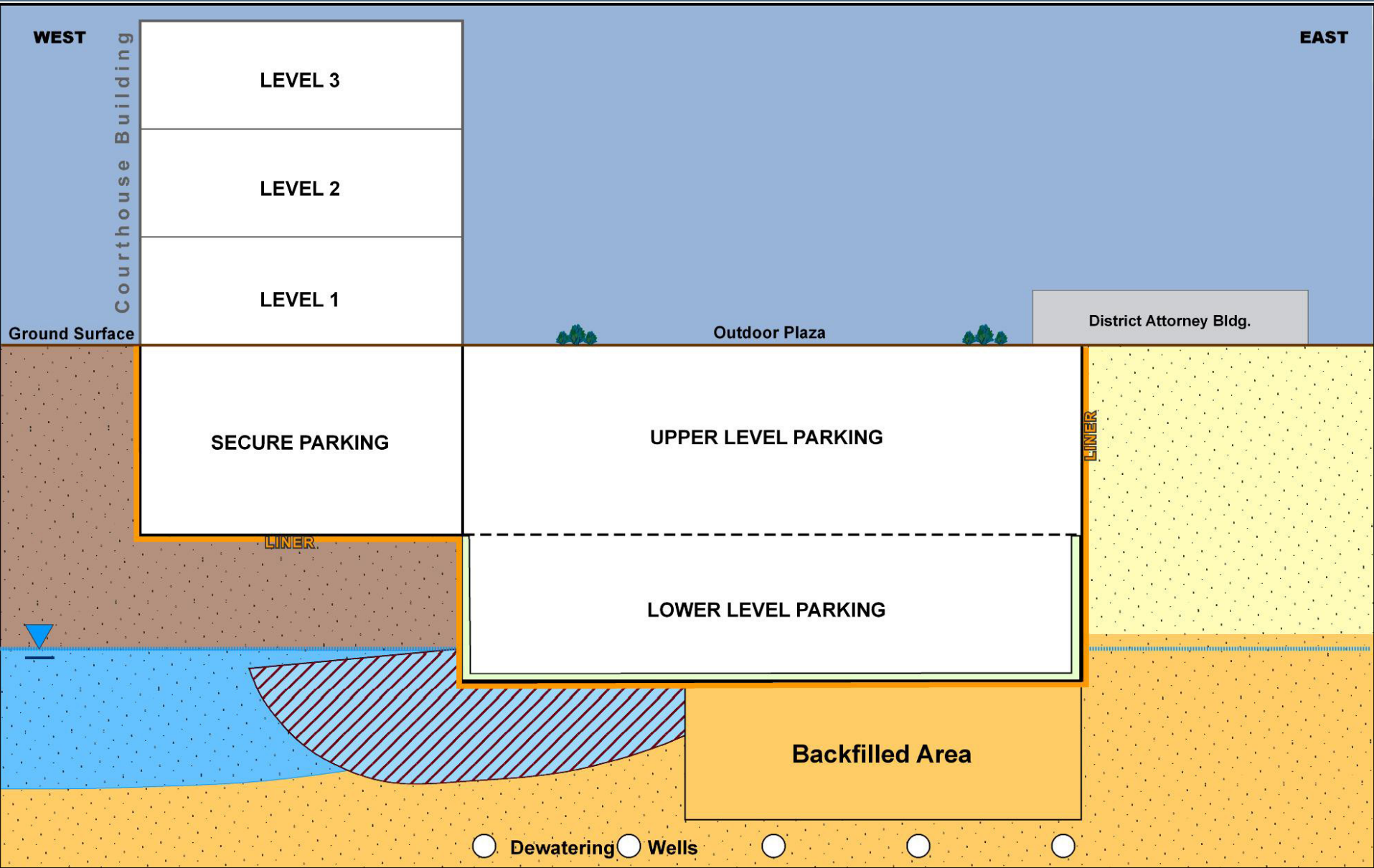
# Status of Remediation



# Status of Remediation



# Status of Remediation





# Status of Remediation

## Current Activities

Santa Fe County (SFC) Judicial Complex	Vicinity
~ 17,500 Tons of Contaminated Soil Excavated	Soil Vapor Extraction Systems Installed and Operating on North and South Side of Site
>15,000 Gallons of Gasoline Removed	> <b>3,000</b> Gallons of Gasoline Removed
Horizontal Wells Installed	Long Term Groundwater Monitoring Ongoing

# Status of Remediation

## Regulatory Agency Reviews and Approvals

**Received Conditional Eligibility into NMED's Voluntary Remediation Program**

**Received Technical Approval of Remediation Plan from NMED's Petroleum Storage Tank Bureau**

# Status of Remediation

## Future Remediation Activities

**Continue Excavation and Installation of Horizontal Wells**

**Add Oxygen Releasing Compound to Backfill**

**Finalize Liner Design**

**Continue Vicinity Remediation by NMED, PSTB**

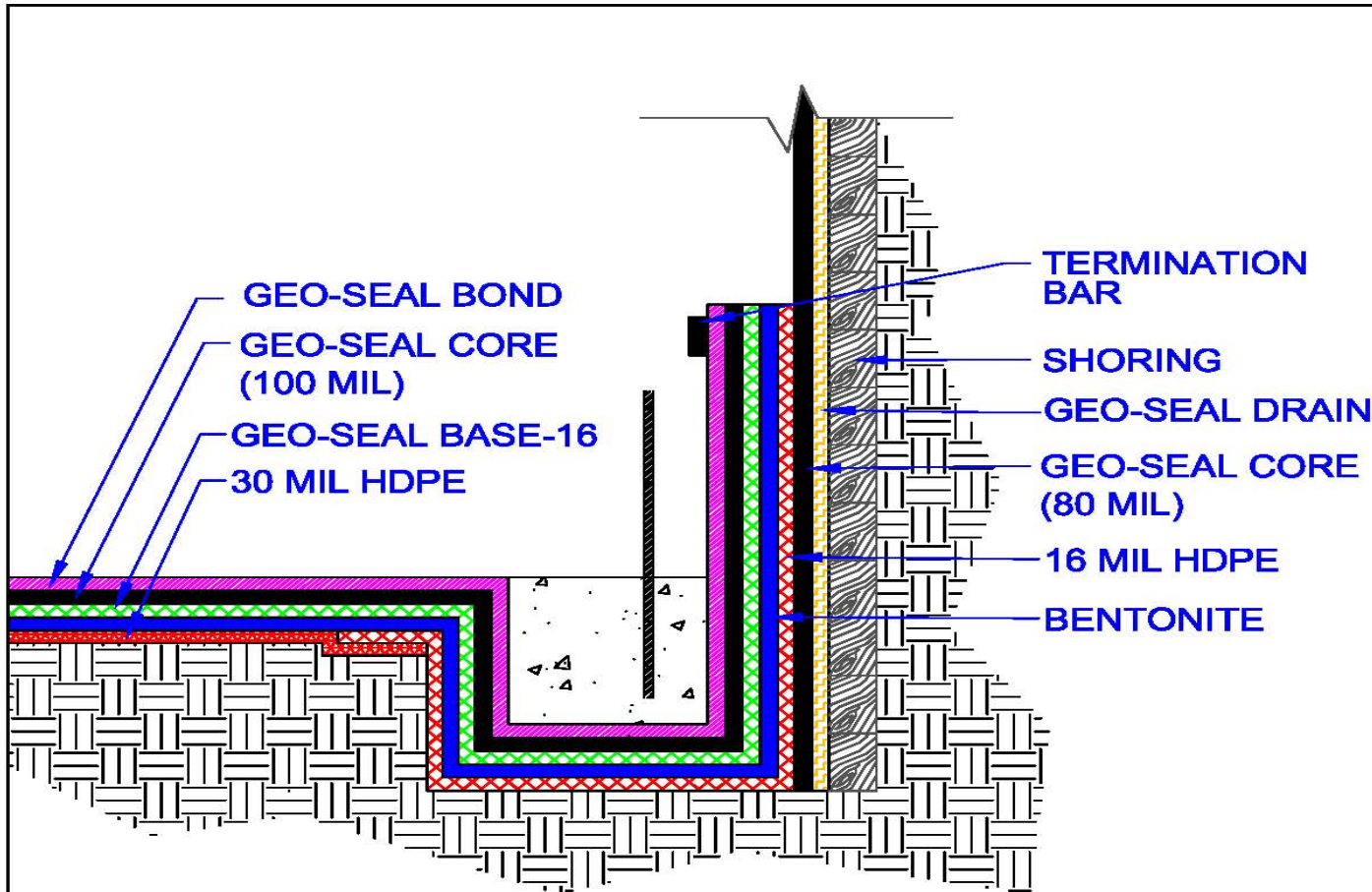
# Building Protection

**Finalize Design and Install Liner**

**Vent Vapor from Exterior**

**Increased Capacity of HVAC System**

# Building Protection



**NOTE: UNDER SLAB MEMBRANE WILL TERMINATE 1' ABOVE DESIGN WATER TABLE AND WATER STOPS WILL BE REQUIRED AT COLD JOINTS**



**1011 CALLE SOMBRA  
SAN CLEMENTE, CA 92673  
949.366.8000 OFFICE**

**Geo-Seal™**  
Advanced Vapor Management Technology

© 2008 Land Science Technologies

Dm by **MC**

Ch by **PG**

App by **PG**

Date **8/11/10**

Scale **NONE**

**SFCJC  
GEO-SEAL SYSTEM**

# Building Protection

**Regular Indoor Air Sampling and Laboratory Analysis**

**Monitoring Instruments within Parking Garage**

# Questions

