

# Santa Fe County Corrections Department Overview



- Corrections Overview
- Adult Detention Facility Overview
- Electronic Monitoring Overview
- Youth Development Program Overview



# Table of Contents

<b><u>Section</u></b>	<b><u>Pages</u></b>
Over View and Mapping	3 to 7
Bookings, Releases, USMS Invoices and Average Daily Population	8 to 13
Medical	14
Inmate Classifications and Programs	15 to 16
Youth Development Program	17 to 19
Electronic Monitoring and Bonds	20 to 25
Closing	26

# Santa Fe County Adult Detention Facility



# Corrections Division Overview

- The Santa Fe County Corrections Department was established in January of 2004 as the facilities moved from being privately run to the County. The Department provides oversight of all County Correctional programs including the Youth Development Program, the Electronic Monitoring Program, and the Adult Correctional Facility. The Department consists of approximately 320 staff, the majority of whom work at the Adult Facility and Electronic Monitoring Programs. They provide supervision of approximately 775 men, women, and youthful offenders who are detained daily in Santa Fe County.

## **Mission Statement**

- Our Mission is to provide administrative oversight of all Santa Fe County Correctional Facilities. The Department works closely with Law Enforcement Agencies, the Courts, Public Defender's Office, the District Attorneys Office, the New Mexico Department of Children Youth and Families, and the Community to provide a range of services to meet the needs of Santa Fe's incarcerated population. We are committed to providing a safe, secure, and humane environment with a variety of services to assist those in detention, whether they are sentenced to our facilities or awaiting transport, trial or sentencing.

# Corrections Department Vacancy Rate

Public Safety/Corrections Division									
FTE Status Report as of 07/23/12									
	Authorized	Authorized	Filled	Vacant	Frozen	Fillable	Positions	Vacancy	
Facility\Program	FTE	Positions	Positions	Positions	Positions	Vacancies	Available	Rate	Note
Administration	13.5	14.0	11.0	3.0	1.0	2.0	13.0	15.38	
Adult Facility	158.0	158.0	128.0	30.0	2.0	28.0	156.0	17.95	
Day Reporting	4.0	4.0	0.0	4.0	4.0	0.0	0.0	0.00	
Electronic Monitoring	9.0	9.0	8.0	1.0	1.0	0.0	8.0	0.00	
Maintenance	4.0	4.0	4.0	0.0	0.0	0.0	4.0	0.00	
Medical	34.2	38.0	22.0	16.0	11.0	5.0	27.0	18.52	
Substance Abuse/ARC	17.0	17.0	0.0	17.0	17.0	0.0	0.0	0.00	
Youth Development Facility	55.5	57.0	30.0	2.0	25.0	2.0	32.0	6.25	
Totals	295.2	301.0	203.0	73.0	61.0	37.0	240.0	15.42	
Adult Detention Facility									
Specific Vacancy Rates by Classification as of 07/23/12									
	Authorized	Authorized	Filled	Vacant	Frozen	Fillable	Positions	Vacancy	
Postion Classification	FTE	Positions	Positions	Positions	Positions	Vacancies	Available	Rate	
Corporal	15.0	15.0	13.0	2.0	0.0	2.0	15.0	13.33	
Detention Officer	84.0	84.0	64.0	20.0	0.0	20.0	84.0	23.81	
Lieutenant	8.0	8.0	7.0	1.0	0.0	1.0	8.0	12.50	
Sergant	13.0	13.0	13.0	0.0	0.0	0.0	13.0	0.00	I-Sergent Position Reclassed to Fire and Safety Officer

# Adult Detention Facility

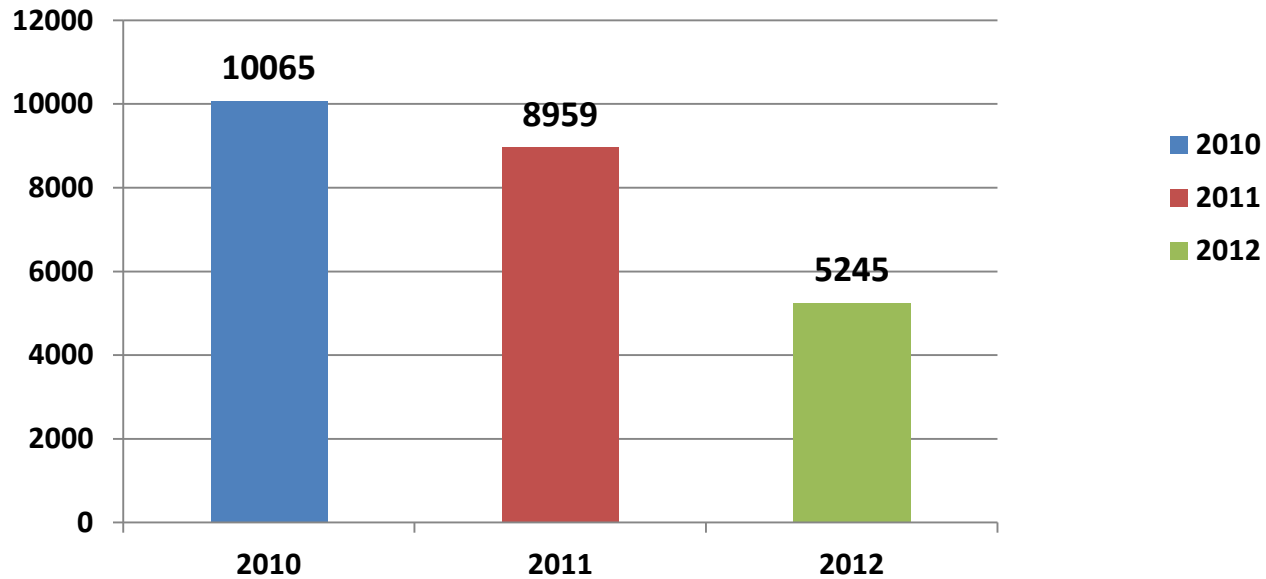
## Inmate Goals

- The Santa Fe County Adult Detention Facility prides itself in providing quality services in all areas of Detention and Programming.
- To continue our mission statement we must continue to assess our inmate population for further programming and continue to sustain the identified programs that are in place and execute our facility goals and mission statement by:
- **The Adult Detention Facilities 5 Key Inmate Goals**
- The Division of Corrections will provide
- **THE RIGHT SERVICES AT THE RIGHT TIME**
- delivered by
- **QUALITY STAFF**
- Using
- **PROVEN PRACTICES**
- in
- **SAFE ENVIRONMENTS**
- embracing
- **RESTORATIVE COMMUNITY JUSTICE PRINCIPLES**



# 2010 THRU 2012 YEAR TOTALS BOOKINGS – TOTAL POPULATION

2010 THRU 2012 YEAR TOTALS  
BOOKINGS - TOTAL POPULATION

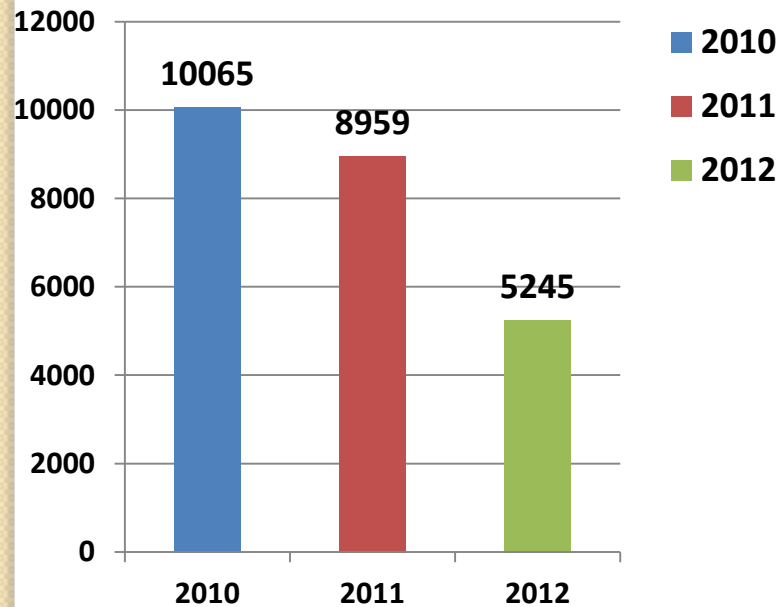




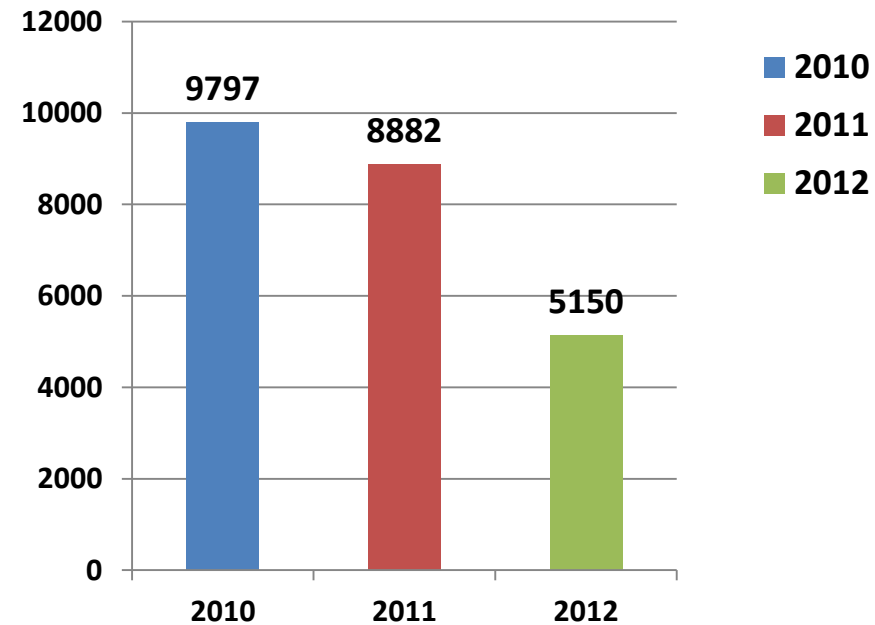
# 2010 THRU 2012

## TOTAL BOOKINGS & RELEASES

2010 THRU 2012 YEAR TOTALS  
BOOKINGS - TOTAL POPULATION

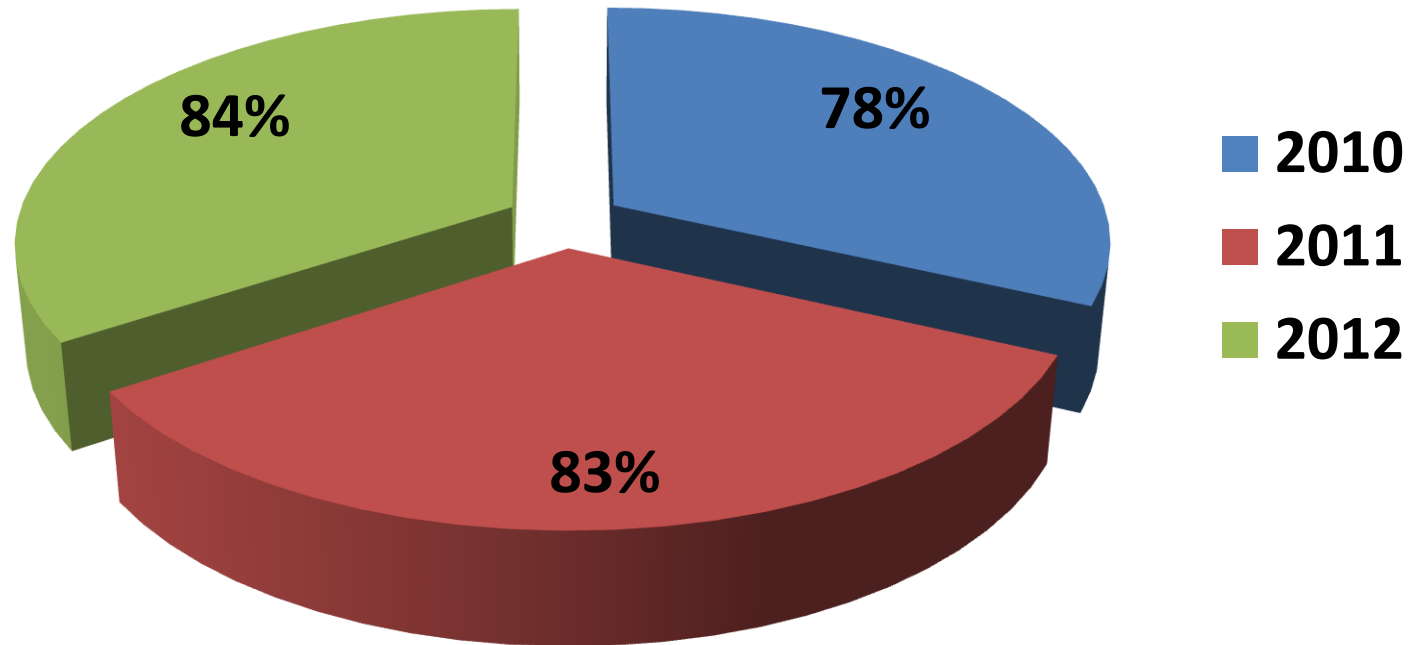


2010 THRU 2012 YEAR TOTALS  
RELEASES - TOTAL POPULATION

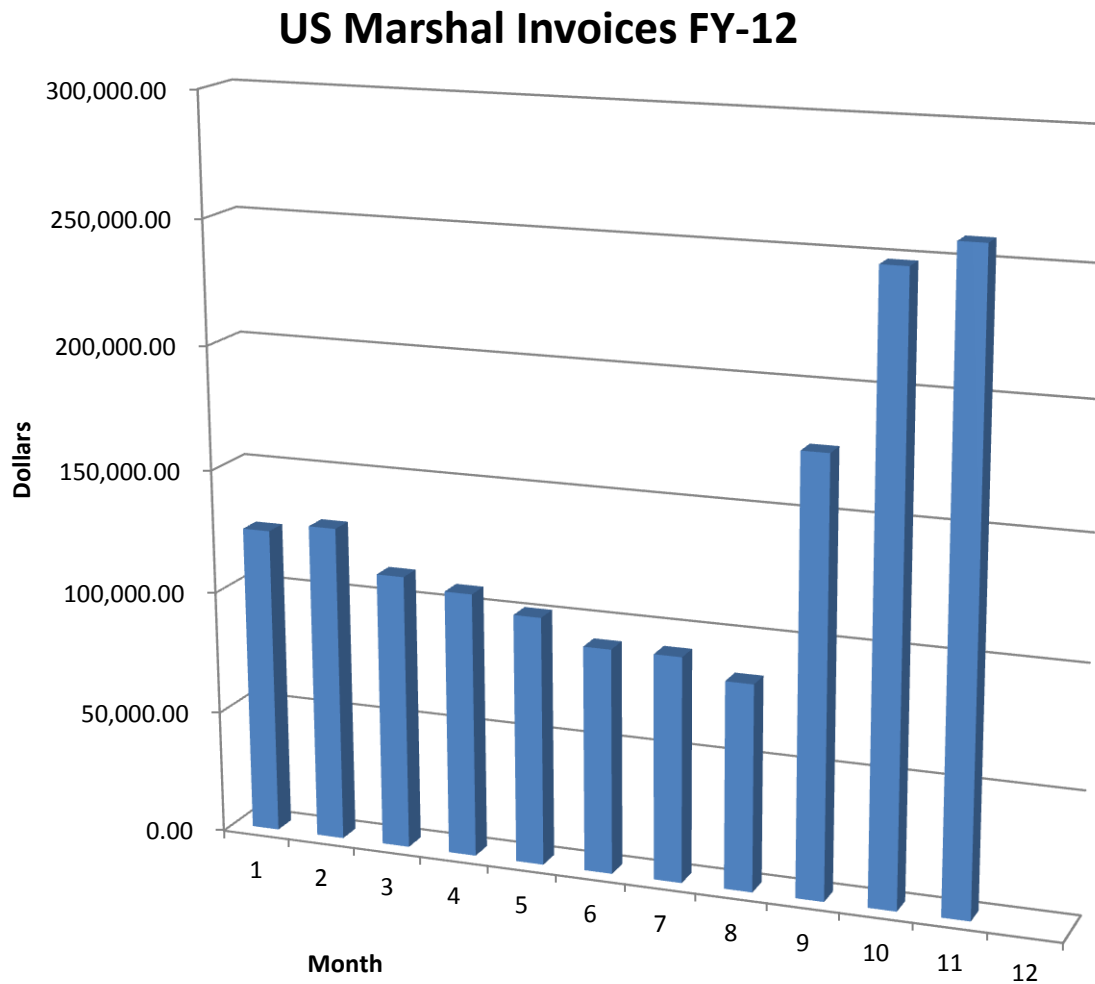


# 2010 THRU 2012 AVG PERCENT SANTA FE COUNTY

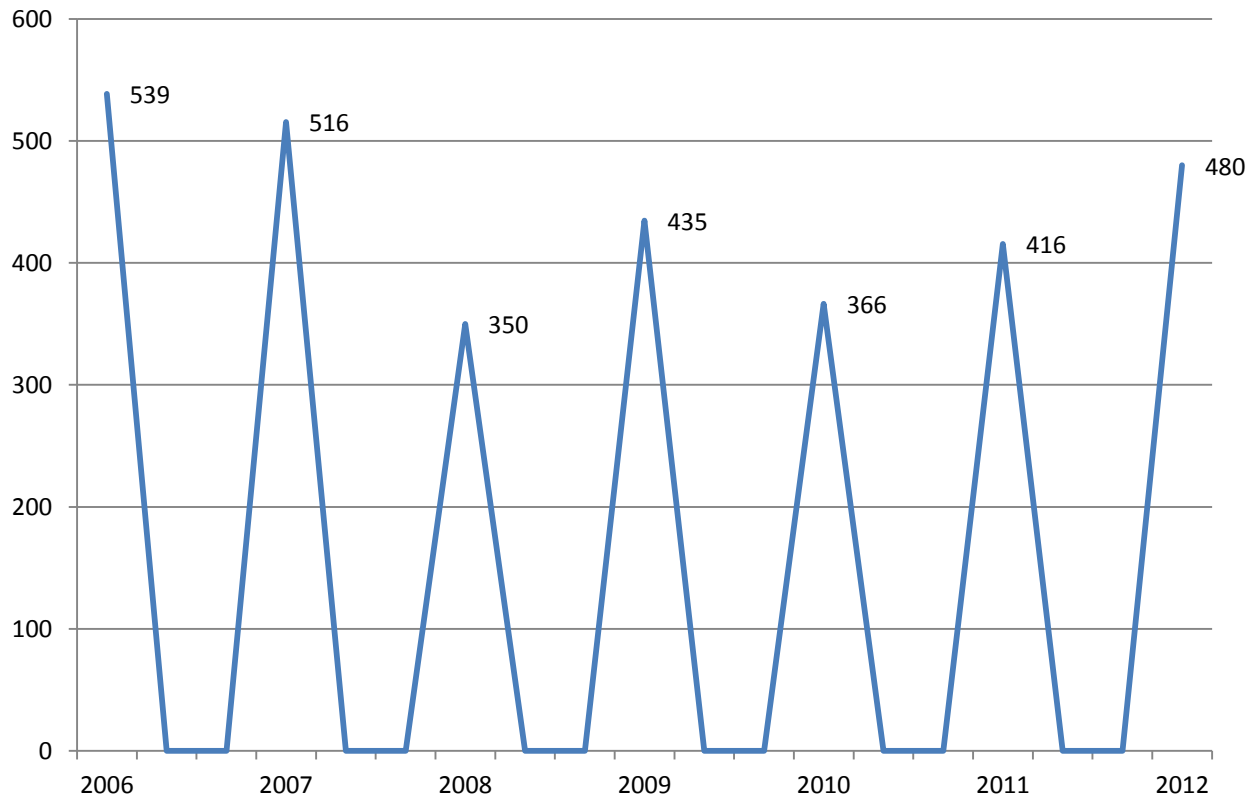
## 2010 THRU 2012 AVG. PERCENTAGE OF BOOKINGS SANTA FE COUNTY



# US Marshall's Invoices Chart – Fiscal Year 2012



# Adult Detention Facility Average Daily Population



# Reasons for Population Changes

- 2008 NMDOC withdrew all state inmates
- 2009 Began holding Bernalillo –MDC Inmates
- 2012 U.S Marshalls contract

# Santa Fe County Medical

- Healthcare services at Santa Fe County is a joint effort of custody and health staff.
- At Santa Fe County medical staff provide continuous care of chronic illnesses, detoxification of alcohol, benzodiazepine and opiates, acute care of new illnesses, and follow-up care for patients currently undergoing intensive treatments in the community.
- In partnership with:
  - NM Department of Health, public health services are provided including testing, reporting and treatment of communicable diseases.
  - Christus St. Vincent Hospital emergency services and inpatient services are obtained
  - University of New Mexico Hospital obstetric and opiate treatment services are provided for pregnant opiate addicted females.

# Intake Classification - Defined

The initial classification process refers to the first classification action completed when he or she arrives to the facility. During this process the intake Classification Officer will review the severity of the current offense, prior convictions, prior institution behavior and current institutional behavior. This will entail gross categorization for assignment to the general population orientation unit, maximum security, and medical or safekeeping units. Inmates/residents will not be classified or housed by race, color, creed or national origin, but will be separated by gender, legal status, or for other management reasons.

After classifying and obtaining all information, the Classification Officer will complete a movement sheet with all new intakes for the day. The Movement Sheet will provide all the information needed for security to house inmates accordingly. Inmates will be removed from booking that same day.

The Classification Officer in the intake area will perform intake classification functions 7 days a week between 8:00 am and 5:00 pm.

# Adult Detention Facility Programs Offered

- Alcoholics Anonymous
- Anger Management Education
- Art Group
- Bible Study (English and Spanish)
- Disease Prevention
- English as Second Language (ESL)
- GED
- Life Skills
- Music Appreciation
- Narcotics Anonymous
- Parenting Skills
- Psycho-Educational
- Reading for Moms and Dads
- Spanish
- Stress Reduction
- Substance Abuse Education
- Domestic Violence
- Restorative Justice





# Youth Development Program

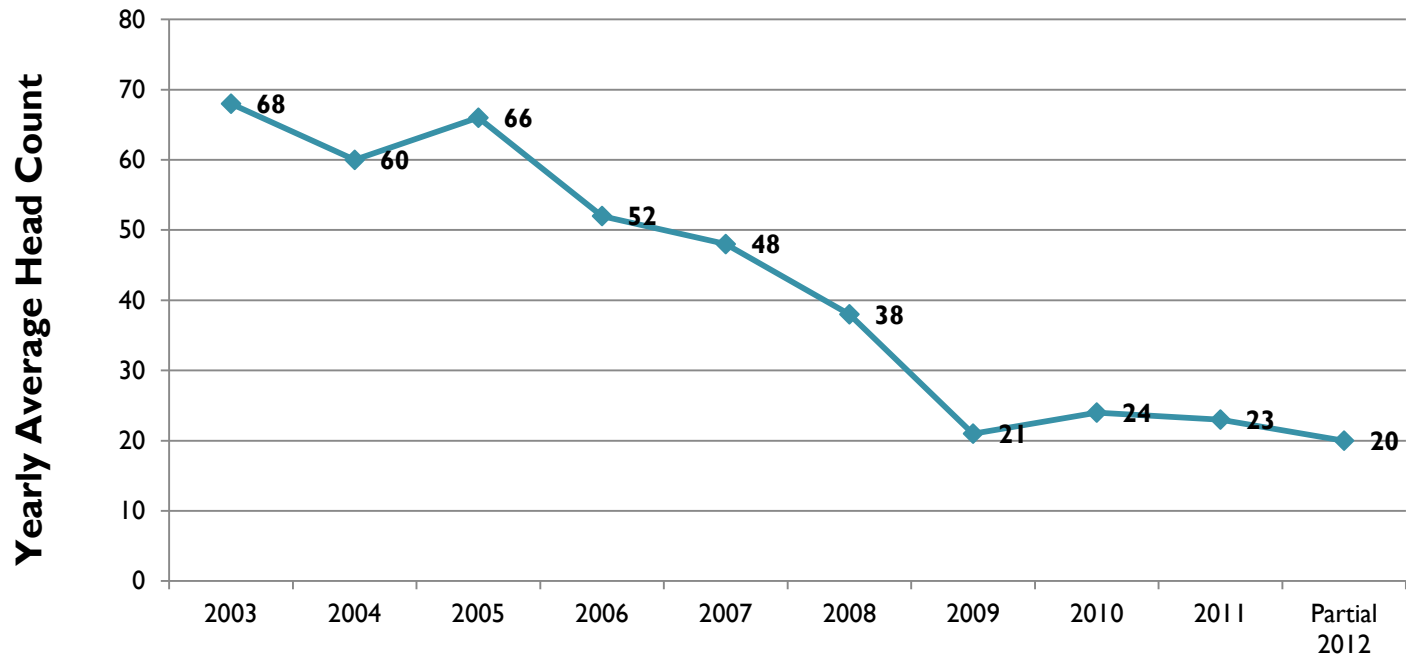
## Overview

### Mission Statement

- We, the staff of the Santa Fe County Youth Development Program, are dedicated to changing the lives of our youth by providing a safe, secure, structured, caring and learning environment. Through meaningful interaction and role modeling, we strive to develop in our youth the character traits of honesty, respect, and responsibility. Given their continued desire and commitment to develop, our youth develop goals which can assist them to become productive members of society.
- Provide detention services for our incarcerated youth; our Detention program serves approximately 40 pre-adjudicated youth from Santa Fe, surrounding Counties, Pueblos, and the US Marshals Service. In addition, the facility hosts the **Day Reporting Program** in which the judiciary and juvenile probation officers can request placement for youth who require a degree of supervision, yet do not require full court-ordered detention. Residents in this program receive educational services and a variety of in-house programming, to include a myriad of volunteer services.

# Youth Development Program Average Head Count 2003 - 2012

2003 Thru 2012  
Average Head Count



# Electronic Monitoring Program

## Overview

### **Mission Statement**

- By utilizing the latest technology to monitor assigned offenders, we are committed to assisting the Courts in making a difference by providing an inexpensive and non-intrusive alternative to traditional sentencing and incarceration.
- Electronic Monitoring (E.M.) is an alternative to incarceration. This program serves juvenile and adult offenders who have demonstrated to the Courts they can be monitored within the community versus being incarcerated. It allows them to live at home and continue to work and / or attend school on an approved schedule that is monitored electronically. In addition, they are frequently required to submit to drug and/or alcohol tests. Their compliance with the program is directed, monitored and evaluated by E.M. Case Managers, who then report the case to the Courts. At any given time, there are approximately 175 people enrolled in the E.M. Program..

# EM- PROGRAM OVERVIEW

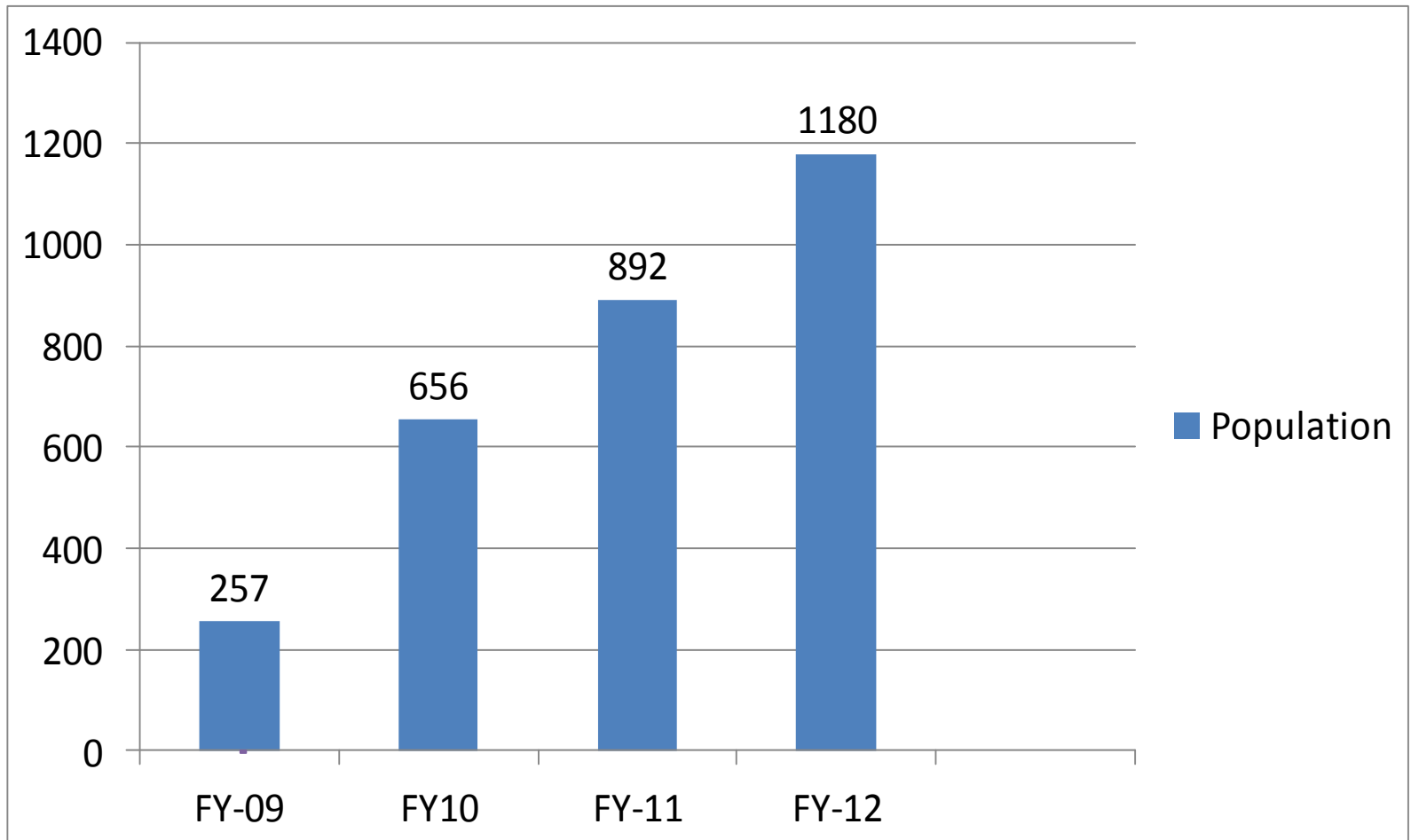
- Work in conjunction with District and Magistrate Courts
- Also with District Attorney, Law Enforcement, and Adult Probation
- Work with community based programming (counseling, treatment based programs, education, employers, etc.) in reference to Clients
- Clients are seen once a week to review requested schedules and provide documentation (doctor excuses, medications, pay stub, sign in sheet, etc.)
- Clients are seen once a week to review requested schedules and provide documentation (doctor excuses, medications, pay stub, sign in sheet, etc.)
- Clients are drug tested for intake and through color system 7 days a week
- Schedules allowed are based on permission given by Courts
- Length of time supervised is based on time on conditions of release before trial (6 months- 1 year), take a plea (6 months- 1 year), if they violate, how long their sentence is (2 days- 2 years), pending appeal of Supreme Court (5.5 years), etc.

## LIST OF TYPES OF SUPERVISION

- |                     |                 |
|---------------------|-----------------|
| 1) Regular Bracelet | 5) TAD Bracelet |
| 2) Sobriator        | 6) Drug Testing |
| 3) GPS Bracelet     |                 |

# HISTORICAL POPULATION

**FY-09 THRU FY-12**



# EM COST FOR CLIENT EQUIPMENT & URINE TESTING

SANTA FE CASES ONLY (D-101 or M-49)		
EMPLOYMENT STATUS	EQUIPMENT TYPE	DAILY CHARGE
EMPLOYED	REGULAR ANKLE BRACELET	\$5.00
EMPLOYED	SOBRIETER	\$5.00
EMPLOYED	BRACELET WITH ALCOHOL TESTING (TAD)	\$10.00
EMPLOYED	GPS (Global Positioning System)	\$10.00
EMPLOYED OR UNEMPLOYED	URINE ANALYSIS TESTING	\$15.00 <b>PER TEST</b>

**If unemployed – no charge for equipment for Santa Fe Cases**

**Must pay for Urine Analysis. If un employed, unless Judge waives fees.**

**SFC- Cost for equipment- includes 100% insurance for lost or damaged equipment.**

# EM COST FOR CLIENT EQUIPMENT & URINE TESTING

ALL OTHER CASE #S & COUNTIES	
EQUIPMENT	DAILY CHARGE
REGULAR ANKLE BRACELET	\$15.00
SOBRIETOR	\$10.00
BRACELET WITH ALCOHOL TESTING (TAD)	\$25.00
GPS (GLOBAL POSITIONING SYSTEM)	\$20.00
URINE ANALYSIS	\$15.00 <b>PER TEST</b>

**\*\*\*All other case numbers and counties must pay whether employed or unemployed, first week is due on day of enrollment. Judge can't waive any cost for other case numbers or other counties.\*\*\*\***

**SFC- Cost for equipment- includes 100% insurance for lost or damaged equipment.**

<u>TYPE</u>	Ankle Bracelet	Sobriotor	TAD	GPS	Urine Testing
<u>Cost</u>	\$2.39 per day	\$2.77 per day	\$8.98 per day	\$6.50 per day	\$3.50 per test



# BOND PROGRAM OVERVIEW

## BONDS

- Work with Bonding Companies in processing Surety Bond releases from custody
- Work with families in processing (Cash Bond in form of Money Order/Cashiers Check) persons from incarceration
- Also work with Courts in generating Surety Bonds and Cash Bonds to appropriate Courts

# Closing Statements

- *The Department has six dedicated operational goals for all employees to follow for operational efficiency*
- **1. Protection: To protect the general public, staff and offenders by consistent confinement**
- *within appropriate facilities with adequate security, safety, treatment and programs corresponding to the offender's classification, assignment, and special requirements.*
- **2. Professionalism: The Department strives to serve the public through progressive and**
- *proactive achievement based on professionalism, organizational commitment, American*
- *Correctional Association (ACA) Accreditation standards, and collaboration with timely*
- *and concise communications with the public, policy makers, stakeholders, and offenders.*
- **3. Operational Cost Effectiveness: The Department maintains and improves management,**
- *operations, support services through budgeting and performance analysis to ensure cost effective and efficient use of*
- *appropriated funds.*
- **4. Offender Program Accountability: The Department operates effective, efficient, and**
- *progressive offender programs for treatment, education, and work assignments with full*
- *accountability based on measured improvement in offender behavior and community reentry*
- *through pro-social stabilization.*
- **5. Physical Plant Efficiencies: The Department will manage, and operate the**
- *physical plant of the Department Of Corrections (DOC) in an efficient and cost-effective*
- *manner consistent with applicable statutes, regulatory agencies, building codes, and*
- *ACA accreditation standards.*
- **6. Information System Efficiencies: The Department maintains superior customer service**
- *and improves internal DOC communication and information systems by upgrading and*
- *maintaining reliable data infrastructure, hardware, software, and network systems with*
- *implementation based on standardized Department-wide accessibility and operational*
- *efficiencies.*
- *The Santa Fe County Adult Detention Facility – will be applying for accreditations through the New Mexico Association of Counties. Jail standards in FY13 as well as preparing for accreditation thru American Correctional Association.*