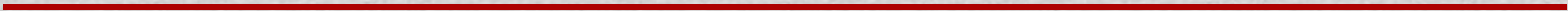
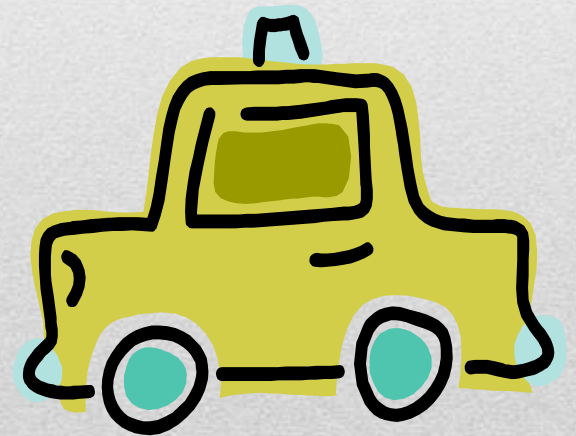


CADDY

Data Analysis and Overview

Rachel O'Connor
Health and Human Services Director

Lupe Sanchez
SF County DWI Coordinator



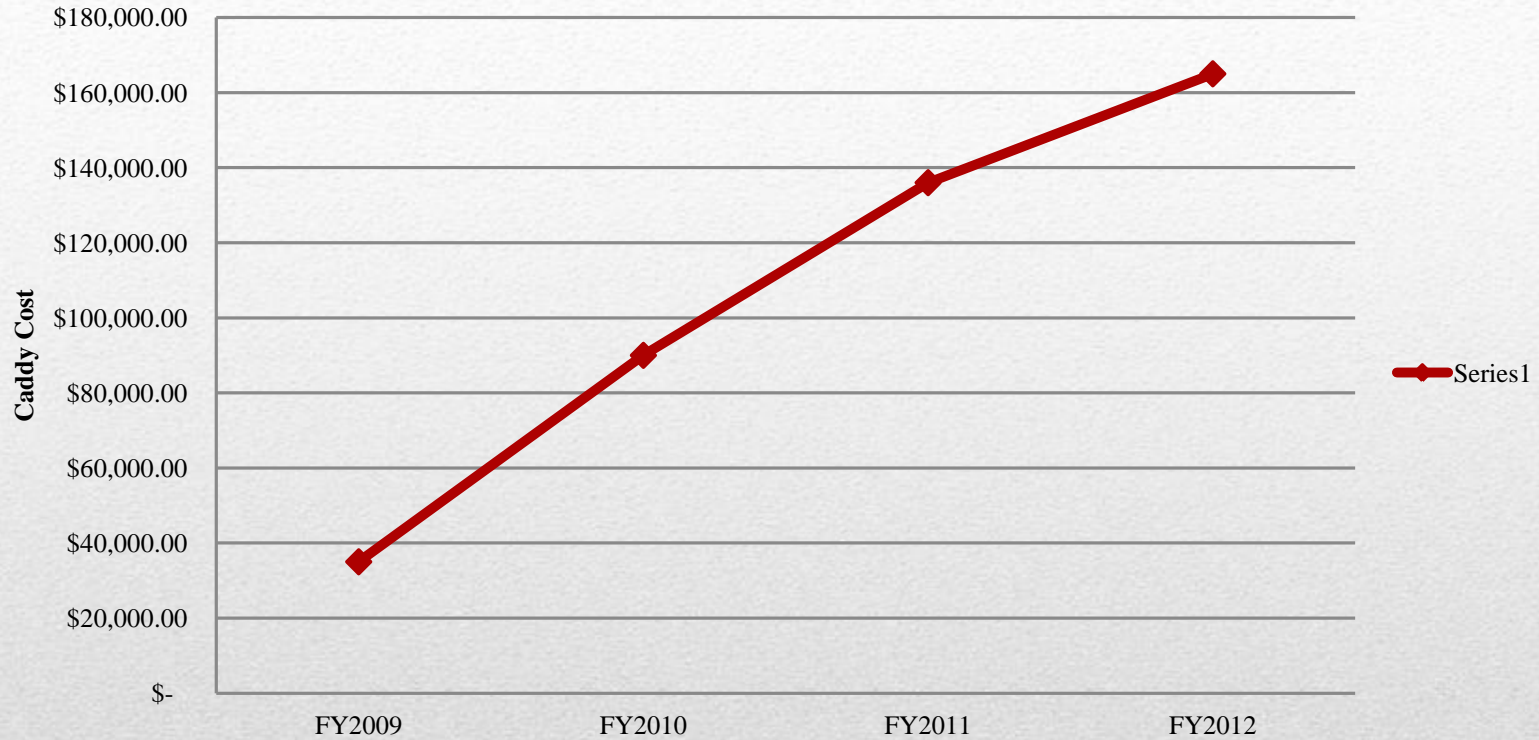


CURRENT CADDY PROGRAM

- Initiated in 2009 using State alcohol excise funding.
- Currently pays for any ride within the City limits with a \$5 co-pay for an individual.
- Three or more riders is \$10 co-pay.
- Serves the City only, riders picks up the cost at the Santa Fe County line.

Current CADDY Program-Rules

CADDY COST PER FISCAL YEAR



Current CADDY Cost

- Average cost overall for a ride is about **\$18.38**.
- Average cost to the County per ride is about **\$12.79**.

Current CADDY-Cost



CADDY RIDERS PER FISCAL YEAR



Current CADDY-Riders

WHAT TRIPS ARE BEING FUNDED?

The County provided partial funding for **1337** CADDy trips in December 2011.

Of the 1337, **913 (68%)** involved an establishment with a liquor license.

- **576 (43%)** of the trips were from a licensed liquor establishment to an address that appeared to be residential in nature. In other words, a ride home.
- **337 (25%)** trips were from a residential/home base area to a liquor establishment.
- **424 (32%)** were trips that did not include a recognized liquor establishment.

***Data based on for December 2011

Current CADDY- Data



CONCERNS

- The cost of CADDY has increased by over 45% from FY 10-11.
- DWI Council members were concerned about providing funds for patrons to get to a liquor establishment.
- 32% of rides are to “other” locations.
- Current program does not allow for any service beyond the County line.
- CADDy has not been evaluated to determine impact on DWI crashes, deaths etc.

Concerns



DWI Planning Council Recommendations for Summer Pilot

1. Fund one way rides only from a licensed liquor establishment or drinking location to a home destination.
2. Make the rides cheap (\$1) for a **Summer** pilot.
3. Contract being released to evaluate CADDy.
4. Cap on individual rides (\$25) with some room to expand in to the County (7 miles).

Summer Pilot

- Provides coverage into some areas of the County.
- Approximately 7 miles from drinking location/establishment
- Rider picks up after 7 miles

Summer Pilot-County service



THANK YOU!
