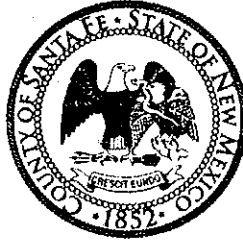


Daniel "Danny" Mayfield
Commissioner, District 1

Virginia Vigil
Commissioner, District 2

Robert A. Anaya
Commissioner, District 3



Kathy Holian
Commissioner, District 4

Elizabeth Stefanics
Commissioner, District 5

Katherine Miller
County Manager

Memorandum

DATE: *JULY 14, 2011*

TO: *BOARD OF COUNTY COMMISSIONERS*

FROM: *ROBERT MARTINEZ, PUBLIC WORKS TRANSPORTATION MGR. RM*

VIA: *KATHERINE MILLER, COUNTY MANAGER*

SUBJECT: *BCC MEETING JULY 26, 2011
RESOLUTION NO. 2011-_____. REQUEST APPROVAL OF A
RESOLUTION ACCEPTING ADDITIONAL EASEMENT FOR RICHARDS
AVENUE FOR COUNTY MAINTENANCE.*

BACKGROUND AND SUMMARY:

The Public Works and Growth Management Departments have been working cooperatively with the Santa Fe Community College (SFCC) and area homeowner's associations to mitigate traffic issues on Richards Avenue in the SFCC area. The SFCC is currently constructing a new entrance into the campus, which includes a roundabout. The new entrance was reviewed by County staff and some of the requirements by staff require additional easement for the Richards Avenue roundabout. Public Works currently maintains Richards Avenue, which will include the new roundabout.

ACTION REQUESTED:

Public Works requests approval of a resolution accepting additional easement for Richards Avenue for County maintenance.

**BOARD OF COUNTY COMMISSIONERS OF SANTA FE COUNTY
RESOLUTION NO. 2011 -**

**A RESOLUTION ACCEPTING ADDITIONAL EASEMENT FOR RICHARDS
AVENUE FOR COUNTY MAINTENANCE**

Whereas, Santa Fe County (the County) encompasses a geographical area of approximately 2,000 square miles;

Whereas, the County is primarily rural with small areas of concentrated development;

Whereas, a comprehensive road system is necessary and creates vital links between and among communities;

Whereas, there are an estimated 1,500 total miles of roads within the County;

Whereas, of the total road miles, approximately 574 miles are recognized as County roads and maintained by the County;

Whereas, the County's goal is to provide the best services possible to County residents, within the County's available resources;

Whereas, Richards Avenue is located within the County and is currently a County maintained road;

Whereas, the Santa Fe Community College (the SFCC) and the County have been working cooperatively to mitigate traffic issues on Richards Avenue;

Whereas, the SFCC is constructing a new entrance into the campus that will assist with better traffic control and will include a roundabout on Richards Avenue; and

Whereas, the roundabout requires the SFCC to grant the County additional property for the road easement as shown on Exhibit "A".

NOW, THEREFORE, BE IT RESOLVED that the Board of County Commissioners accepts, for County maintenance, additional property that will be incorporated into the road easement from the SFCC as part of the Richards Avenue roundabout and as further identified in the grant of easement and dedication shown on Exhibit "A" that is attached and incorporated herein

PASSED, APPROVED, and ADOPTED THIS ____ DAY OF _____, 2011.

BOARD OF COUNTY COMMISSIONERS

Virginia Vigil, Chair

Attest:

Valerie Espinoza, County Clerk

Approved as to form:

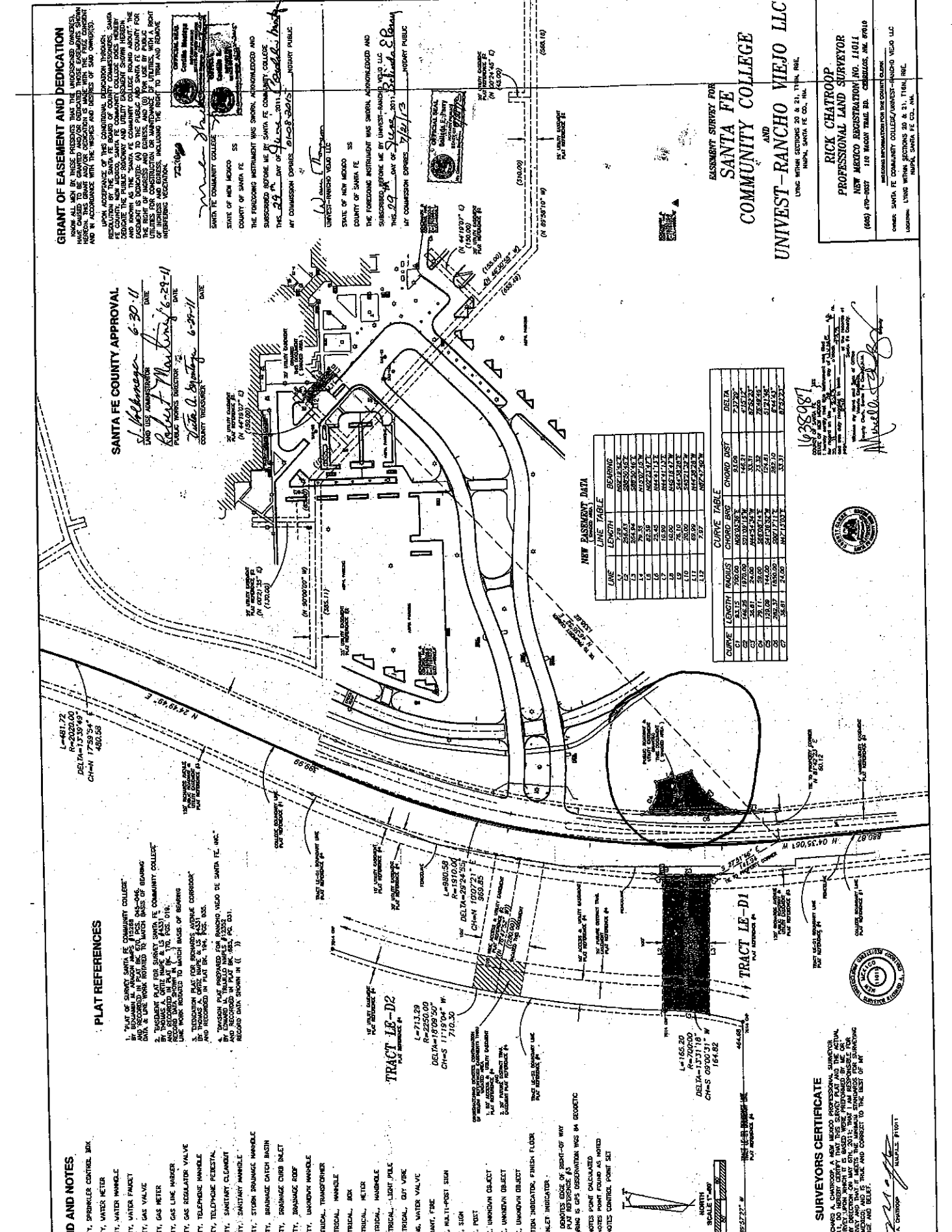

Stephen Ross, County Attorney

EXHIBIT A

GRANT OF EASEMENT AND DEDICATION
 THE NEW MEXICO REAL PROPERTY UNRECORDED INSTRUMENTS ACT PROVIDES THAT ANY EASEMENT OR DEDICATION OF PUBLIC RIGHTS TO BE GRANTED AND/OR INDICATED THEREON MUST BE MADE BY A WRITTEN INSTRUMENT WHICH IS RECORDED IN THE PUBLIC RECORDS OF THE COUNTY AND STATE OF NEW MEXICO.
 WHEREAS, THE STATE OF NEW MEXICO HAS ADOPTED THE UNRECORDED INSTRUMENTS ACT AND KNOWS AS THE SANTA FE COMMUNITY COLLEGE BOARD ABOUT THE EASEMENT IS DEDICATED TO THE PUBLIC AND SANTA FE COUNTY FOR THE PURPOSE OF CONSTRUCTION OR MAINTENANCE OF UTILITIES FOR THE USE OF UTILITIES AND EGRESS, INCLUDING THE RIGHT TO TRAVEL AND REMOVE HAZARDOUS MATERIALS;
 WHEREAS, THE STATE OF NEW MEXICO HAS ADOPTED THE UNRECORDED INSTRUMENTS ACT AND KNOWS AS THE SANTA FE COMMUNITY COLLEGE BOARD ABOUT THE EASEMENT IS DEDICATED TO THE PUBLIC AND SANTA FE COUNTY FOR THE PURPOSE OF CONSTRUCTION OR MAINTENANCE OF UTILITIES FOR THE USE OF UTILITIES AND EGRESS, INCLUDING THE RIGHT TO TRAVEL AND REMOVE HAZARDOUS MATERIALS;
 WHEREAS, THE STATE OF NEW MEXICO HAS ADOPTED THE UNRECORDED INSTRUMENTS ACT AND KNOWS AS THE SANTA FE COMMUNITY COLLEGE BOARD ABOUT THE EASEMENT IS DEDICATED TO THE PUBLIC AND SANTA FE COUNTY FOR THE PURPOSE OF CONSTRUCTION OR MAINTENANCE OF UTILITIES FOR THE USE OF UTILITIES AND EGRESS, INCLUDING THE RIGHT TO TRAVEL AND REMOVE HAZARDOUS MATERIALS;

SANTA FE COUNTY APPROVAL
 I, Robert Martinez, County Treasurer, do hereby certify that the above and foregoing instrument was duly recorded in the Public Records of Santa Fe County, New Mexico, on this 6-29-11 day of June, 2011.
 COUNTY TREASURER

UNIVEST-RANCHO VIEJO LLC
 STATE OF NEW MEXICO
 COUNTY OF SANTA FE
 THE FOREGOING INSTRUMENT WAS SHOWN, APPROVED AND SUBSCRIBED BEFORE ME BY UNIVEST-RANCHO VIEJO LLC THIS 29 DAY OF June, 2011.
 MY COMMISSION EXPIRES 7/1/13 NOTARY PUBLIC



- LEGEND AND NOTES**
- 350 UTILITY, SPRINKLER CONTROL BOX
 - 360 UTILITY, WATER METER
 - 370 UTILITY, WATER METER
 - 380 UTILITY, WATER METER
 - 390 UTILITY, WATER METER
 - 400 UTILITY, GAS VALVE
 - 410 UTILITY, GAS METER
 - 420 UTILITY, GAS REGULATOR VALVE
 - 430 UTILITY, TELEPHONE MANHOLE
 - 440 UTILITY, TELEPHONE REESTABL.
 - 450 UTILITY, SANITARY CLEANOUT
 - 460 UTILITY, SANITARY MANHOLE
 - 470 UTILITY, STORM DRAINAGE MANHOLE
 - 480 UTILITY, STORM DRAINAGE CATCH BASIN
 - 490 UTILITY, DRAINAGE CURB INLET
 - 500 UTILITY, DRAINAGE ROOF
 - 510 UTILITY, UNKNOWN MANHOLE
 - 520 ELECTRICAL, TRANSFORMER
 - 530 ELECTRICAL, MANHOLE
 - 540 ELECTRICAL, BOX
 - 550 ELECTRICAL, METER
 - 560 ELECTRICAL, LIGHT POLE
 - 570 ELECTRICAL, GUY WIRE
 - 580 PUMP, WATER VALVE
 - 590 HYDRANT, FIRE
 - 600 SITE, SIGN
 - 610 SITE, POST
 - 620 SITE, UNKNOWN OBJECT
 - 630 SITE, UNKNOWN OBJECT
 - 640 SITE, UNKNOWN OBJECT
 - 650 ELEVATION INDICATOR, FINISH FLOOR
 - 660 WADA INLET INDICATOR

- PLAT REFERENCES**
1. PLAT OF SANTA FE COMMUNITY COLLEGE, RECORDED IN PLAT BOOK 1758, PAGE 54.
 2. TRACT LE-D1, SANTA FE COMMUNITY COLLEGE, RECORDED IN PLAT BOOK 1758, PAGE 54.
 3. TRACT LE-D2, SANTA FE COMMUNITY COLLEGE, RECORDED IN PLAT BOOK 1758, PAGE 54.
 4. TRACT LE-D3, SANTA FE COMMUNITY COLLEGE, RECORDED IN PLAT BOOK 1758, PAGE 54.
 5. TRACT LE-D4, SANTA FE COMMUNITY COLLEGE, RECORDED IN PLAT BOOK 1758, PAGE 54.
 6. TRACT LE-D5, SANTA FE COMMUNITY COLLEGE, RECORDED IN PLAT BOOK 1758, PAGE 54.
 7. TRACT LE-D6, SANTA FE COMMUNITY COLLEGE, RECORDED IN PLAT BOOK 1758, PAGE 54.
 8. TRACT LE-D7, SANTA FE COMMUNITY COLLEGE, RECORDED IN PLAT BOOK 1758, PAGE 54.
 9. TRACT LE-D8, SANTA FE COMMUNITY COLLEGE, RECORDED IN PLAT BOOK 1758, PAGE 54.
 10. TRACT LE-D9, SANTA FE COMMUNITY COLLEGE, RECORDED IN PLAT BOOK 1758, PAGE 54.
 11. TRACT LE-D10, SANTA FE COMMUNITY COLLEGE, RECORDED IN PLAT BOOK 1758, PAGE 54.
 12. TRACT LE-D11, SANTA FE COMMUNITY COLLEGE, RECORDED IN PLAT BOOK 1758, PAGE 54.
 13. TRACT LE-D12, SANTA FE COMMUNITY COLLEGE, RECORDED IN PLAT BOOK 1758, PAGE 54.
 14. TRACT LE-D13, SANTA FE COMMUNITY COLLEGE, RECORDED IN PLAT BOOK 1758, PAGE 54.
 15. TRACT LE-D14, SANTA FE COMMUNITY COLLEGE, RECORDED IN PLAT BOOK 1758, PAGE 54.
 16. TRACT LE-D15, SANTA FE COMMUNITY COLLEGE, RECORDED IN PLAT BOOK 1758, PAGE 54.
 17. TRACT LE-D16, SANTA FE COMMUNITY COLLEGE, RECORDED IN PLAT BOOK 1758, PAGE 54.
 18. TRACT LE-D17, SANTA FE COMMUNITY COLLEGE, RECORDED IN PLAT BOOK 1758, PAGE 54.
 19. TRACT LE-D18, SANTA FE COMMUNITY COLLEGE, RECORDED IN PLAT BOOK 1758, PAGE 54.
 20. TRACT LE-D19, SANTA FE COMMUNITY COLLEGE, RECORDED IN PLAT BOOK 1758, PAGE 54.
 21. TRACT LE-D20, SANTA FE COMMUNITY COLLEGE, RECORDED IN PLAT BOOK 1758, PAGE 54.
 22. TRACT LE-D21, SANTA FE COMMUNITY COLLEGE, RECORDED IN PLAT BOOK 1758, PAGE 54.
 23. TRACT LE-D22, SANTA FE COMMUNITY COLLEGE, RECORDED IN PLAT BOOK 1758, PAGE 54.
 24. TRACT LE-D23, SANTA FE COMMUNITY COLLEGE, RECORDED IN PLAT BOOK 1758, PAGE 54.
 25. TRACT LE-D24, SANTA FE COMMUNITY COLLEGE, RECORDED IN PLAT BOOK 1758, PAGE 54.
 26. TRACT LE-D25, SANTA FE COMMUNITY COLLEGE, RECORDED IN PLAT BOOK 1758, PAGE 54.
 27. TRACT LE-D26, SANTA FE COMMUNITY COLLEGE, RECORDED IN PLAT BOOK 1758, PAGE 54.
 28. TRACT LE-D27, SANTA FE COMMUNITY COLLEGE, RECORDED IN PLAT BOOK 1758, PAGE 54.
 29. TRACT LE-D28, SANTA FE COMMUNITY COLLEGE, RECORDED IN PLAT BOOK 1758, PAGE 54.
 30. TRACT LE-D29, SANTA FE COMMUNITY COLLEGE, RECORDED IN PLAT BOOK 1758, PAGE 54.
 31. TRACT LE-D30, SANTA FE COMMUNITY COLLEGE, RECORDED IN PLAT BOOK 1758, PAGE 54.
 32. TRACT LE-D31, SANTA FE COMMUNITY COLLEGE, RECORDED IN PLAT BOOK 1758, PAGE 54.
 33. TRACT LE-D32, SANTA FE COMMUNITY COLLEGE, RECORDED IN PLAT BOOK 1758, PAGE 54.
 34. TRACT LE-D33, SANTA FE COMMUNITY COLLEGE, RECORDED IN PLAT BOOK 1758, PAGE 54.
 35. TRACT LE-D34, SANTA FE COMMUNITY COLLEGE, RECORDED IN PLAT BOOK 1758, PAGE 54.
 36. TRACT LE-D35, SANTA FE COMMUNITY COLLEGE, RECORDED IN PLAT BOOK 1758, PAGE 54.
 37. TRACT LE-D36, SANTA FE COMMUNITY COLLEGE, RECORDED IN PLAT BOOK 1758, PAGE 54.
 38. TRACT LE-D37, SANTA FE COMMUNITY COLLEGE, RECORDED IN PLAT BOOK 1758, PAGE 54.
 39. TRACT LE-D38, SANTA FE COMMUNITY COLLEGE, RECORDED IN PLAT BOOK 1758, PAGE 54.
 40. TRACT LE-D39, SANTA FE COMMUNITY COLLEGE, RECORDED IN PLAT BOOK 1758, PAGE 54.
 41. TRACT LE-D40, SANTA FE COMMUNITY COLLEGE, RECORDED IN PLAT BOOK 1758, PAGE 54.
 42. TRACT LE-D41, SANTA FE COMMUNITY COLLEGE, RECORDED IN PLAT BOOK 1758, PAGE 54.
 43. TRACT LE-D42, SANTA FE COMMUNITY COLLEGE, RECORDED IN PLAT BOOK 1758, PAGE 54.
 44. TRACT LE-D43, SANTA FE COMMUNITY COLLEGE, RECORDED IN PLAT BOOK 1758, PAGE 54.
 45. TRACT LE-D44, SANTA FE COMMUNITY COLLEGE, RECORDED IN PLAT BOOK 1758, PAGE 54.
 46. TRACT LE-D45, SANTA FE COMMUNITY COLLEGE, RECORDED IN PLAT BOOK 1758, PAGE 54.
 47. TRACT LE-D46, SANTA FE COMMUNITY COLLEGE, RECORDED IN PLAT BOOK 1758, PAGE 54.
 48. TRACT LE-D47, SANTA FE COMMUNITY COLLEGE, RECORDED IN PLAT BOOK 1758, PAGE 54.
 49. TRACT LE-D48, SANTA FE COMMUNITY COLLEGE, RECORDED IN PLAT BOOK 1758, PAGE 54.
 50. TRACT LE-D49, SANTA FE COMMUNITY COLLEGE, RECORDED IN PLAT BOOK 1758, PAGE 54.
 51. TRACT LE-D50, SANTA FE COMMUNITY COLLEGE, RECORDED IN PLAT BOOK 1758, PAGE 54.
 52. TRACT LE-D51, SANTA FE COMMUNITY COLLEGE, RECORDED IN PLAT BOOK 1758, PAGE 54.
 53. TRACT LE-D52, SANTA FE COMMUNITY COLLEGE, RECORDED IN PLAT BOOK 1758, PAGE 54.
 54. TRACT LE-D53, SANTA FE COMMUNITY COLLEGE, RECORDED IN PLAT BOOK 1758, PAGE 54.
 55. TRACT LE-D54, SANTA FE COMMUNITY COLLEGE, RECORDED IN PLAT BOOK 1758, PAGE 54.
 56. TRACT LE-D55, SANTA FE COMMUNITY COLLEGE, RECORDED IN PLAT BOOK 1758, PAGE 54.
 57. TRACT LE-D56, SANTA FE COMMUNITY COLLEGE, RECORDED IN PLAT BOOK 1758, PAGE 54.
 58. TRACT LE-D57, SANTA FE COMMUNITY COLLEGE, RECORDED IN PLAT BOOK 1758, PAGE 54.
 59. TRACT LE-D58, SANTA FE COMMUNITY COLLEGE, RECORDED IN PLAT BOOK 1758, PAGE 54.
 60. TRACT LE-D59, SANTA FE COMMUNITY COLLEGE, RECORDED IN PLAT BOOK 1758, PAGE 54.
 61. TRACT LE-D60, SANTA FE COMMUNITY COLLEGE, RECORDED IN PLAT BOOK 1758, PAGE 54.
 62. TRACT LE-D61, SANTA FE COMMUNITY COLLEGE, RECORDED IN PLAT BOOK 1758, PAGE 54.
 63. TRACT LE-D62, SANTA FE COMMUNITY COLLEGE, RECORDED IN PLAT BOOK 1758, PAGE 54.
 64. TRACT LE-D63, SANTA FE COMMUNITY COLLEGE, RECORDED IN PLAT BOOK 1758, PAGE 54.
 65. TRACT LE-D64, SANTA FE COMMUNITY COLLEGE, RECORDED IN PLAT BOOK 1758, PAGE 54.
 66. TRACT LE-D65, SANTA FE COMMUNITY COLLEGE, RECORDED IN PLAT BOOK 1758, PAGE 54.
 67. TRACT LE-D66, SANTA FE COMMUNITY COLLEGE, RECORDED IN PLAT BOOK 1758, PAGE 54.
 68. TRACT LE-D67, SANTA FE COMMUNITY COLLEGE, RECORDED IN PLAT BOOK 1758, PAGE 54.
 69. TRACT LE-D68, SANTA FE COMMUNITY COLLEGE, RECORDED IN PLAT BOOK 1758, PAGE 54.
 70. TRACT LE-D69, SANTA FE COMMUNITY COLLEGE, RECORDED IN PLAT BOOK 1758, PAGE 54.
 71. TRACT LE-D70, SANTA FE COMMUNITY COLLEGE, RECORDED IN PLAT BOOK 1758, PAGE 54.
 72. TRACT LE-D71, SANTA FE COMMUNITY COLLEGE, RECORDED IN PLAT BOOK 1758, PAGE 54.
 73. TRACT LE-D72, SANTA FE COMMUNITY COLLEGE, RECORDED IN PLAT BOOK 1758, PAGE 54.
 74. TRACT LE-D73, SANTA FE COMMUNITY COLLEGE, RECORDED IN PLAT BOOK 1758, PAGE 54.
 75. TRACT LE-D74, SANTA FE COMMUNITY COLLEGE, RECORDED IN PLAT BOOK 1758, PAGE 54.
 76. TRACT LE-D75, SANTA FE COMMUNITY COLLEGE, RECORDED IN PLAT BOOK 1758, PAGE 54.
 77. TRACT LE-D76, SANTA FE COMMUNITY COLLEGE, RECORDED IN PLAT BOOK 1758, PAGE 54.
 78. TRACT LE-D77, SANTA FE COMMUNITY COLLEGE, RECORDED IN PLAT BOOK 1758, PAGE 54.
 79. TRACT LE-D78, SANTA FE COMMUNITY COLLEGE, RECORDED IN PLAT BOOK 1758, PAGE 54.
 80. TRACT LE-D79, SANTA FE COMMUNITY COLLEGE, RECORDED IN PLAT BOOK 1758, PAGE 54.
 81. TRACT LE-D80, SANTA FE COMMUNITY COLLEGE, RECORDED IN PLAT BOOK 1758, PAGE 54.
 82. TRACT LE-D81, SANTA FE COMMUNITY COLLEGE, RECORDED IN PLAT BOOK 1758, PAGE 54.
 83. TRACT LE-D82, SANTA FE COMMUNITY COLLEGE, RECORDED IN PLAT BOOK 1758, PAGE 54.
 84. TRACT LE-D83, SANTA FE COMMUNITY COLLEGE, RECORDED IN PLAT BOOK 1758, PAGE 54.
 85. TRACT LE-D84, SANTA FE COMMUNITY COLLEGE, RECORDED IN PLAT BOOK 1758, PAGE 54.
 86. TRACT LE-D85, SANTA FE COMMUNITY COLLEGE, RECORDED IN PLAT BOOK 1758, PAGE 54.
 87. TRACT LE-D86, SANTA FE COMMUNITY COLLEGE, RECORDED IN PLAT BOOK 1758, PAGE 54.
 88. TRACT LE-D87, SANTA FE COMMUNITY COLLEGE, RECORDED IN PLAT BOOK 1758, PAGE 54.
 89. TRACT LE-D88, SANTA FE COMMUNITY COLLEGE, RECORDED IN PLAT BOOK 1758, PAGE 54.
 90. TRACT LE-D89, SANTA FE COMMUNITY COLLEGE, RECORDED IN PLAT BOOK 1758, PAGE 54.
 91. TRACT LE-D90, SANTA FE COMMUNITY COLLEGE, RECORDED IN PLAT BOOK 1758, PAGE 54.
 92. TRACT LE-D91, SANTA FE COMMUNITY COLLEGE, RECORDED IN PLAT BOOK 1758, PAGE 54.
 93. TRACT LE-D92, SANTA FE COMMUNITY COLLEGE, RECORDED IN PLAT BOOK 1758, PAGE 54.
 94. TRACT LE-D93, SANTA FE COMMUNITY COLLEGE, RECORDED IN PLAT BOOK 1758, PAGE 54.
 95. TRACT LE-D94, SANTA FE COMMUNITY COLLEGE, RECORDED IN PLAT BOOK 1758, PAGE 54.
 96. TRACT LE-D95, SANTA FE COMMUNITY COLLEGE, RECORDED IN PLAT BOOK 1758, PAGE 54.
 97. TRACT LE-D96, SANTA FE COMMUNITY COLLEGE, RECORDED IN PLAT BOOK 1758, PAGE 54.
 98. TRACT LE-D97, SANTA FE COMMUNITY COLLEGE, RECORDED IN PLAT BOOK 1758, PAGE 54.
 99. TRACT LE-D98, SANTA FE COMMUNITY COLLEGE, RECORDED IN PLAT BOOK 1758, PAGE 54.
 100. TRACT LE-D99, SANTA FE COMMUNITY COLLEGE, RECORDED IN PLAT BOOK 1758, PAGE 54.
 101. TRACT LE-D100, SANTA FE COMMUNITY COLLEGE, RECORDED IN PLAT BOOK 1758, PAGE 54.

NEW PASSEMENT DATA

LINE	LENGTH	BEARING
L1	1.70	S89°58'10" W
L2	2.62	S89°58'10" W
L3	2.62	S89°58'10" W
L4	2.62	S89°58'10" W
L5	2.62	S89°58'10" W
L6	2.62	S89°58'10" W
L7	2.62	S89°58'10" W
L8	2.62	S89°58'10" W
L9	2.62	S89°58'10" W
L10	2.62	S89°58'10" W
L11	2.62	S89°58'10" W
L12	2.62	S89°58'10" W

CURVE TABLE

CURVE	LENGTH	RADIUS	CHORD DIST	DELTA
C1	1.70	100.00	1.69	1.69
C2	2.62	100.00	2.60	2.60
C3	2.62	100.00	2.60	2.60
C4	2.62	100.00	2.60	2.60
C5	2.62	100.00	2.60	2.60
C6	2.62	100.00	2.60	2.60
C7	2.62	100.00	2.60	2.60
C8	2.62	100.00	2.60	2.60
C9	2.62	100.00	2.60	2.60
C10	2.62	100.00	2.60	2.60
C11	2.62	100.00	2.60	2.60
C12	2.62	100.00	2.60	2.60

SURVEYORS CERTIFICATE
 I, Rick Chatroop, a duly licensed and sworn-in Professional Land Surveyor, do hereby certify that the above and foregoing instrument was duly recorded in the Public Records of Santa Fe County, New Mexico, on this 6-29-11 day of June, 2011.
 PROFESSIONAL LAND SURVEYOR
 NEW MEXICO REGISTRATION NO. 11011
 (663) 470-0007 110 MACON TRAIL BL. CERRILLOS, N.M. 87910
 COUNTY TREASURER

UNIVEST-RANCHO VIEJO LLC
 STATE OF NEW MEXICO
 COUNTY OF SANTA FE
 THE FOREGOING INSTRUMENT WAS SHOWN, APPROVED AND SUBSCRIBED BEFORE ME BY UNIVEST-RANCHO VIEJO LLC THIS 29 DAY OF June, 2011.
 MY COMMISSION EXPIRES 7/1/13 NOTARY PUBLIC

SANTA FE COUNTY APPROVAL
 I, Robert Martinez, County Treasurer, do hereby certify that the above and foregoing instrument was duly recorded in the Public Records of Santa Fe County, New Mexico, on this 6-29-11 day of June, 2011.
 COUNTY TREASURER

GRANT OF EASEMENT AND DEDICATION
 THE NEW MEXICO REAL PROPERTY UNRECORDED INSTRUMENTS ACT PROVIDES THAT ANY EASEMENT OR DEDICATION OF PUBLIC RIGHTS TO BE GRANTED AND/OR INDICATED THEREON MUST BE MADE BY A WRITTEN INSTRUMENT WHICH IS RECORDED IN THE PUBLIC RECORDS OF THE COUNTY AND STATE OF NEW MEXICO.
 WHEREAS, THE STATE OF NEW MEXICO HAS ADOPTED THE UNRECORDED INSTRUMENTS ACT AND KNOWS AS THE SANTA FE COMMUNITY COLLEGE BOARD ABOUT THE EASEMENT IS DEDICATED TO THE PUBLIC AND SANTA FE COUNTY FOR THE PURPOSE OF CONSTRUCTION OR MAINTENANCE OF UTILITIES FOR THE USE OF UTILITIES AND EGRESS, INCLUDING THE RIGHT TO TRAVEL AND REMOVE HAZARDOUS MATERIALS;
 WHEREAS, THE STATE OF NEW MEXICO HAS ADOPTED THE UNRECORDED INSTRUMENTS ACT AND KNOWS AS THE SANTA FE COMMUNITY COLLEGE BOARD ABOUT THE EASEMENT IS DEDICATED TO THE PUBLIC AND SANTA FE COUNTY FOR THE PURPOSE OF CONSTRUCTION OR MAINTENANCE OF UTILITIES FOR THE USE OF UTILITIES AND EGRESS, INCLUDING THE RIGHT TO TRAVEL AND REMOVE HAZARDOUS MATERIALS;
 WHEREAS, THE STATE OF NEW MEXICO HAS ADOPTED THE UNRECORDED INSTRUMENTS ACT AND KNOWS AS THE SANTA FE COMMUNITY COLLEGE BOARD ABOUT THE EASEMENT IS DEDICATED TO THE PUBLIC AND SANTA FE COUNTY FOR THE PURPOSE OF CONSTRUCTION OR MAINTENANCE OF UTILITIES FOR THE USE OF UTILITIES AND EGRESS, INCLUDING THE RIGHT TO TRAVEL AND REMOVE HAZARDOUS MATERIALS;

UNIVEST-RANCHO VIEJO LLC
 STATE OF NEW MEXICO
 COUNTY OF SANTA FE
 THE FOREGOING INSTRUMENT WAS SHOWN, APPROVED AND SUBSCRIBED BEFORE ME BY UNIVEST-RANCHO VIEJO LLC THIS 29 DAY OF June, 2011.
 MY COMMISSION EXPIRES 7/1/13 NOTARY PUBLIC

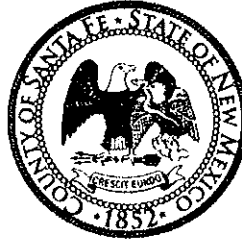
SANTA FE COUNTY APPROVAL
 I, Robert Martinez, County Treasurer, do hereby certify that the above and foregoing instrument was duly recorded in the Public Records of Santa Fe County, New Mexico, on this 6-29-11 day of June, 2011.
 COUNTY TREASURER

GRANT OF EASEMENT AND DEDICATION
 THE NEW MEXICO REAL PROPERTY UNRECORDED INSTRUMENTS ACT PROVIDES THAT ANY EASEMENT OR DEDICATION OF PUBLIC RIGHTS TO BE GRANTED AND/OR INDICATED THEREON MUST BE MADE BY A WRITTEN INSTRUMENT WHICH IS RECORDED IN THE PUBLIC RECORDS OF THE COUNTY AND STATE OF NEW MEXICO.
 WHEREAS, THE STATE OF NEW MEXICO HAS ADOPTED THE UNRECORDED INSTRUMENTS ACT AND KNOWS AS THE SANTA FE COMMUNITY COLLEGE BOARD ABOUT THE EASEMENT IS DEDICATED TO THE PUBLIC AND SANTA FE COUNTY FOR THE PURPOSE OF CONSTRUCTION OR MAINTENANCE OF UTILITIES FOR THE USE OF UTILITIES AND EGRESS, INCLUDING THE RIGHT TO TRAVEL AND REMOVE HAZARDOUS MATERIALS;
 WHEREAS, THE STATE OF NEW MEXICO HAS ADOPTED THE UNRECORDED INSTRUMENTS ACT AND KNOWS AS THE SANTA FE COMMUNITY COLLEGE BOARD ABOUT THE EASEMENT IS DEDICATED TO THE PUBLIC AND SANTA FE COUNTY FOR THE PURPOSE OF CONSTRUCTION OR MAINTENANCE OF UTILITIES FOR THE USE OF UTILITIES AND EGRESS, INCLUDING THE RIGHT TO TRAVEL AND REMOVE HAZARDOUS MATERIALS;
 WHEREAS, THE STATE OF NEW MEXICO HAS ADOPTED THE UNRECORDED INSTRUMENTS ACT AND KNOWS AS THE SANTA FE COMMUNITY COLLEGE BOARD ABOUT THE EASEMENT IS DEDICATED TO THE PUBLIC AND SANTA FE COUNTY FOR THE PURPOSE OF CONSTRUCTION OR MAINTENANCE OF UTILITIES FOR THE USE OF UTILITIES AND EGRESS, INCLUDING THE RIGHT TO TRAVEL AND REMOVE HAZARDOUS MATERIALS;

Daniel "Danny" Mayfield
Commissioner, District 1

Virginia Vigil
Commissioner, District 2

Robert A. Anaya
Commissioner, District 3



Kathy Holian
Commissioner, District 4

Elizabeth Stefanics
Commissioner, District 5

Katherine Miller
County Manager

Memorandum

DATE: *JULY 14, 2011*

TO: *BOARD OF COUNTY COMMISSIONERS*

FROM: *ROBERT MARTINEZ, PUBLIC WORKS TRANSPORTATION MGR. RM*

VIA: *KATHERINE MILLER, COUNTY MANAGER*

SUBJECT: *BCC MEETING JULY 26, 2011
RESOLUTION NO. 2011-_____. REQUEST APPROVAL OF A
RESOLUTION ACCEPTING COLLEGE DRIVE FOR COUNTY
MAINTENANCE.*

BACKGROUND AND SUMMARY:

The Public Works and Growth Management Departments have been working cooperatively with the Santa Fe Community College (SFCC) and area homeowner's associations to mitigate traffic issues on Richards Avenue in the SFCC area. The County has required the SFCC to construct a secondary access into the campus off of College Drive. This secondary access will not only divert traffic from the main entrance, but will also provide additional access into the campus in the event of an emergency. The planned South East Connector will eventually connect College Drive to Rabbit Road, which will remove traffic from Richards Avenue. College Drive was conditionally dedicated to the County on December 12, 1996 in anticipation of an additional entrance into the college campus. College Drive was constructed to County standards and meets current standards.

- *College Drive*, beginning at the intersection with Richards Avenue and extending east to the intersection with Burnt Water Road, a distance of approximately 0.32 miles.

ACTION REQUESTED:

Public Works requests approval of a resolution accepting College Drive for County maintenance.

BOARD OF COUNTY COMMISSIONERS OF SANTA FE COUNTY

RESOLUTION NO. 2011 -

**A RESOLUTION ACCEPTING COLLEGE DRIVE FOR
COUNTY MAINTENANCE**

Whereas, Santa Fe County (the County) encompasses a geographical area of approximately 2,000 square miles;

Whereas, the County is primarily rural with small areas of concentrated development;

Whereas, a comprehensive road system is necessary and creates vital links between and among communities;

Whereas, there are an estimated 1,500 total miles of roads within the County;

Whereas, of the total miles, approximately 574 miles are recognized as County roads and are maintained by the County;

Whereas, the County's goal is to provide the best services possible to County residents within the County's available resources;

Whereas, College Drive is located within Santa Fe County and is not currently maintained by the County;

Whereas, the Santa Fe Community College (SFCC) and the County have been working cooperatively to utilize College Drive in a manner that will mitigate traffic issues on Richards Avenue;

Whereas, College Drive was conditionally dedicated to the County on December 12, 1996 in anticipation of an additional entrance into the SFCC as shown on Exhibit "A" near the time of its development;

Whereas, College Drive was constructed to acceptable County standards and meets current standards; and

Whereas, the County has required the SFCC to construct a secondary access into the SFCC off of College Drive for traffic safety and control issues.

NOW, THEREFORE, BE IT RESOLVED that the Board of County Commissioners accepts College Drive for County maintenance at a point beginning at the intersection with Richards Avenue and extending east to the intersection with Burnt Water Road, a distance of approximately 0.32 miles, and as set forth in attachment "A" that is incorporated herein.

BE IT FURTHER RESOLVED that said roadway shall be added to the certified listing of County maintained roads filed with the New Mexico Department of Transportation.

PASSED, APPROVED, and ADOPTED THIS _____ DAY OF _____, 2011.

BOARD OF COUNTY COMMISSIONERS

Virginia Vigil, Chair

Attest:

Valerie Espinoza, County Clerk

Approved as to form:



Stephen Ross, County Attorney

