

Daniel "Danny" Mayfield
Commissioner, District 1

Virginia Vigil
Commissioner, District 2

Robert A. Anaya
Commissioner, District 3



Kathy Holian
Commissioner, District 4

Liz Stefanics
Commissioner, District 5

Katherine Miller
County Manager

MEMORANDUM

Date: July 26, 2011
To: Board of County Commissioners
From: Erle Wright, Data Integration Administrator, GIS Division *AEW*
Via: Jack Kolkmeier, Director, Growth Management Department *JK*
Subject: Preparation of Draft County Commission Redistricting Plans

Issue

Based upon input received from the Board at its June 12, 2011 meeting, the Santa Fe County GIS Division has collated additional information requested by the Board and is ready to initiate the development of preliminary redistricting scenarios/plans for the Board's review, consideration and discussion.

Background

The release of the 2010 Decennial Census data by the US Census Bureau for the State of New Mexico and Santa Fe County has revealed that Santa Fe County's five (5) County Commission districts must be adjusted in order to balance population as equally as possible among each of the five districts. Any scenarios/plans developed for consideration should adhere to the following basic principles of districting:

- Equal Population
- Avoid Dilution of Minority Voting Strength
- Compactness
- Contiguity
- Maintenance of Communities of Interest

As per the request of various Commissioners, included in today's packet material are two (2) sets of tables that summarize the relative 2010 population breakdowns by each precinct and district including estimates of urban (incorporated) vs. rural (unincorporated) populations. Updated *Deviation Maps* displaying total population by precinct have also been included for reference.

Action

The GIS Division respectfully requests that the Board review the materials presented herein and provide further feedback and direction as to the development of acceptable redistricting scenarios/plans. In the interest of transparency and the effective use of staff resources, the GIS Division suggests that specific redistricting plan requests be made formally during the course of the next two Board of County Commissioners meetings. All such requested plans will be presented to the Public and the Board for consideration and ultimate selection and adoption at subsequent Commission meetings.

**2011 Redistricting
Precinct Population - All Precincts**

Precincts Sorted by Pct Number			Total County 2010 Population 144,170	Precincts Sorted by Population		
Precinct Number	Current Commission District	2010 Population		Precinct Number	Current Commission District	2010 Population
1	1	2,155	4	1	151	
2	1	419	6	1	332	
3	1	641	19	3	353	
4	1	151	35	4	373	
5	1	1,452	17	3	396	
6	1	332	2	1	419	
7	1	1,054	16	3	486	
8	1	1,222	36	1	498	
9	1	1,267	46	4	532	
10	1	1,798	87	1	544	
11	2	2,299	40	1	547	
12	3	2,639	28	1	549	
13	4	2,084	26	1	559	
14	5	2,755	60	1	568	
15	3	1,101	45	2	578	
16	3	486	43	2	597	
17	3	396	3	1	641	
18	3	1,417	42	4	769	
19	3	353	25	2	915	
20	2	1,261	39	5	1,001	
21	2	1,647	51	4	1,031	
22	1	1,065	49	5	1,045	
23	1	1,097	47	4	1,050	
24	2	1,148	7	1	1,054	
25	2	915	57	4	1,057	
26	1	559	81	4	1,063	
27	1	1,483	22	1	1,065	
28	1	549	63	5	1,074	
29	5	1,584	23	1	1,097	
30	1	1,172	44	2	1,097	
31	2	1,123	15	3	1,101	
32	2	1,880	76	4	1,116	
33	2	1,285	31	2	1,123	
34	2	1,698	68	4	1,147	
35	4	373	24	2	1,148	
36	1	498	30	1	1,172	
37	4	1,284	8	1	1,222	
38	5	1,673	20	2	1,261	
39	5	1,001	9	1	1,267	
40	1	547	37	4	1,284	
41	4	1,769	33	2	1,285	
42	4	769	50	4	1,298	
43	2	597	18	3	1,417	
44	2	1,097	74	5	1,430	

2011 Redistricting Precinct Population - Precincts by Commission District

Precincts Sorted by Pct Number			Deviation from Ideal Population	Precincts Sorted by Population					
Precinct Number	Current Commission District	2010 Population		Actual	%	Precinct Number	Current Commission District	2010 Population	
1	1	2,155			4	1	151		
2	1	419			6	1	332		
3	1	641			2	1	419		
4	1	151			36	1	498		
5	1	1,452			87	1	544		
6	1	332			40	1	547		
7	1	1,054			28	1	549		
8	1	1,222			26	1	559		
9	1	1,267			60	1	568		
10	1	1,798			3	1	641		
22	1	1,065			7	1	1,054		
23	1	1,097			22	1	1,065		
26	1	559			23	1	1,097		
27	1	1,483			30	1	1,172		
28	1	549			8	1	1,222		
30	1	1,172			9	1	1,267		
36	1	498			5	1	1,452		
40	1	547			27	1	1,483		
58	1	2,089			79	1	1,640		
59	1	1,680			59	1	1,680		
60	1	568			10	1	1,798		
61	1	2,041			61	1	2,041		
79	1	1,640			58	1	2,089		
87	1	544			1	1	2,155		
		26,023			-2,811	-9.7%	46.6% 12,120 <i>estimated urban population</i>		26,023
11	2	2,299					45	2	578
20	2	1,261	43	2			597		
21	2	1,647	25	2			915		
24	2	1,148	44	2			1,097		
25	2	915	31	2			1,123		
31	2	1,123	24	2			1,148		
32	2	1,880	20	2			1,261		
33	2	1,285	33	2			1,285		
34	2	1,698	83	2			1,546		
43	2	597	21	2			1,647		
44	2	1,097	34	2			1,698		
45	2	578	32	2			1,880		
66	2	4,167	11	2			2,299		
80	2	3,861	82	2			3,062		
82	2	3,062	80	2			3,861		
83	2	1,546	66	2			4,167		
		28,164	-670	-2.3%			68.0% 19,166 <i>estimated urban population</i>		28,164

Ideal Population is 144,170 divided by 5 or 28,834 persons per District

2011 Redistricting Precinct Population - Precincts by Commission District

Precincts Sorted by Pct Number			Deviation from Ideal Population	Precincts Sorted by Population		
Precinct Number	Current Commission District	2010 Population		Precinct Number	Current Commission District	2010 Population
14	5	2,755		39	5	1,001
29	5	1,584		49	5	1,045
38	5	1,673		63	5	1,074
39	5	1,001		74	5	1,430
49	5	1,045		56	5	1,497
56	5	1,497		29	5	1,584
63	5	1,074		71	5	1,670
65	5	2,303		38	5	1,673
69	5	2,178		88	5	1,988
70	5	3,992		69	5	2,178
71	5	1,670		65	5	2,303
74	5	1,430		78	5	2,594
75	5	4,312		14	5	2,755
78	5	2,594		70	5	3,992
88	5	1,988		75	5	4,312
31,096			2,262 7.8%	48.7% 15,136 <i>estimated urban population</i>		31,096

Notes:

- <= yellow color coded fields indicate precincts that are 100% incorporated
- <= orange color coded fields indicate precincts that are split between incorporated & unincorporated
- <= pale yellow color coded fields (right hand table, below each district list) indicate current estimated urban (incorporated) population for each district as a percentage of total district population & subtotal of persons. Figures were estimated by totaling 100% incorporated precincts with one half or 50% of the population of split (orange color coded) precincts.

2010 Population of Incorporated Areas within Santa Fe County

Incorporation	2010 Population	Percentage of Total County Population
City of Santa Fe	67,947	47.1%
Town of Edgewood	3,735	2.6%
City of Espanola	10,224	7.1%
City of Espanola*	3,729	2.6%
Total ^	75,411	52.3%

* estimated SF County portion (precincts 58 & 79)

^ Total includes only Santa Fe County population for Espanola (not entire population of 10,224)

Santa Fe County 2011 Redistricting

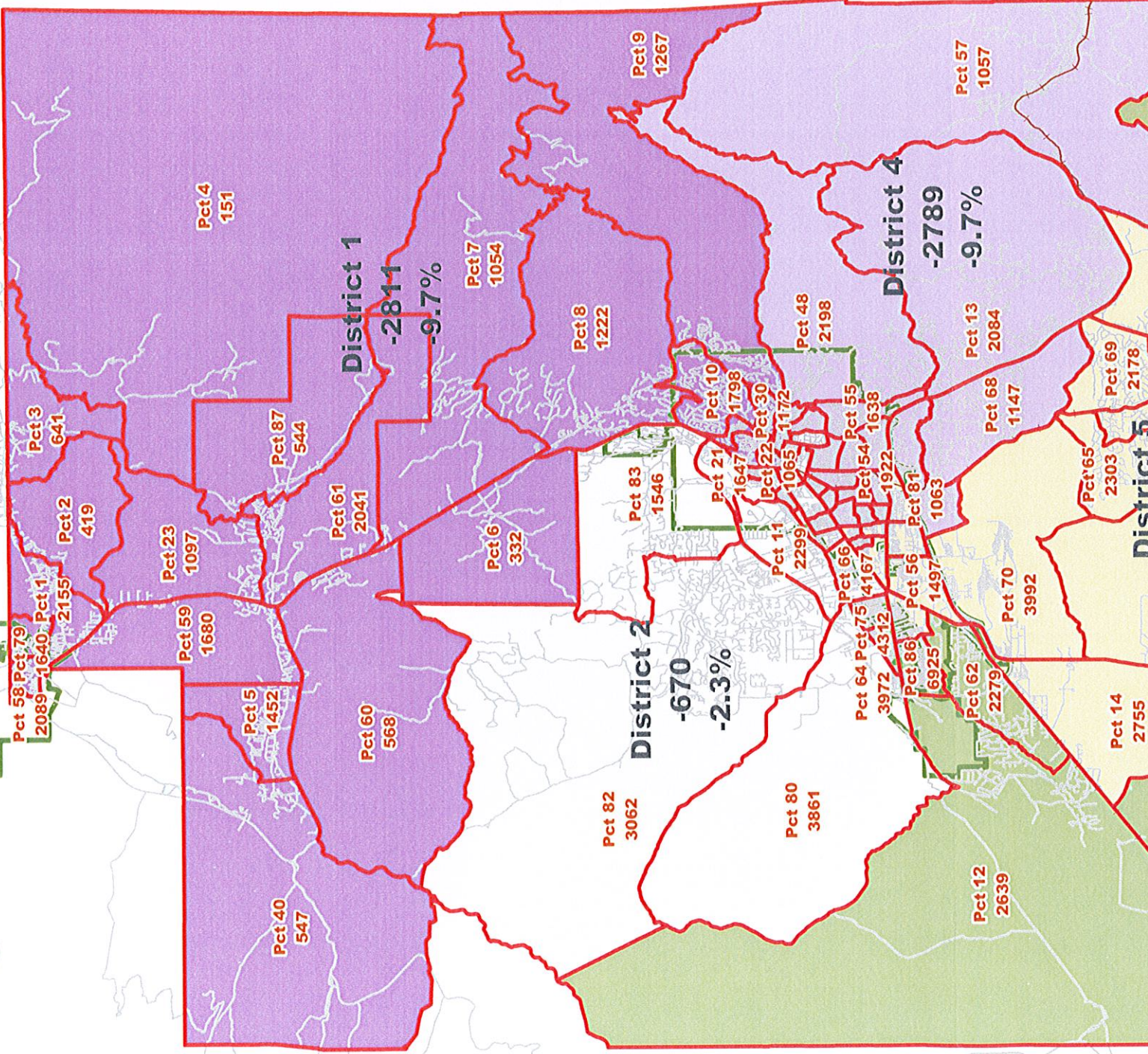
Deviation Map
Full County

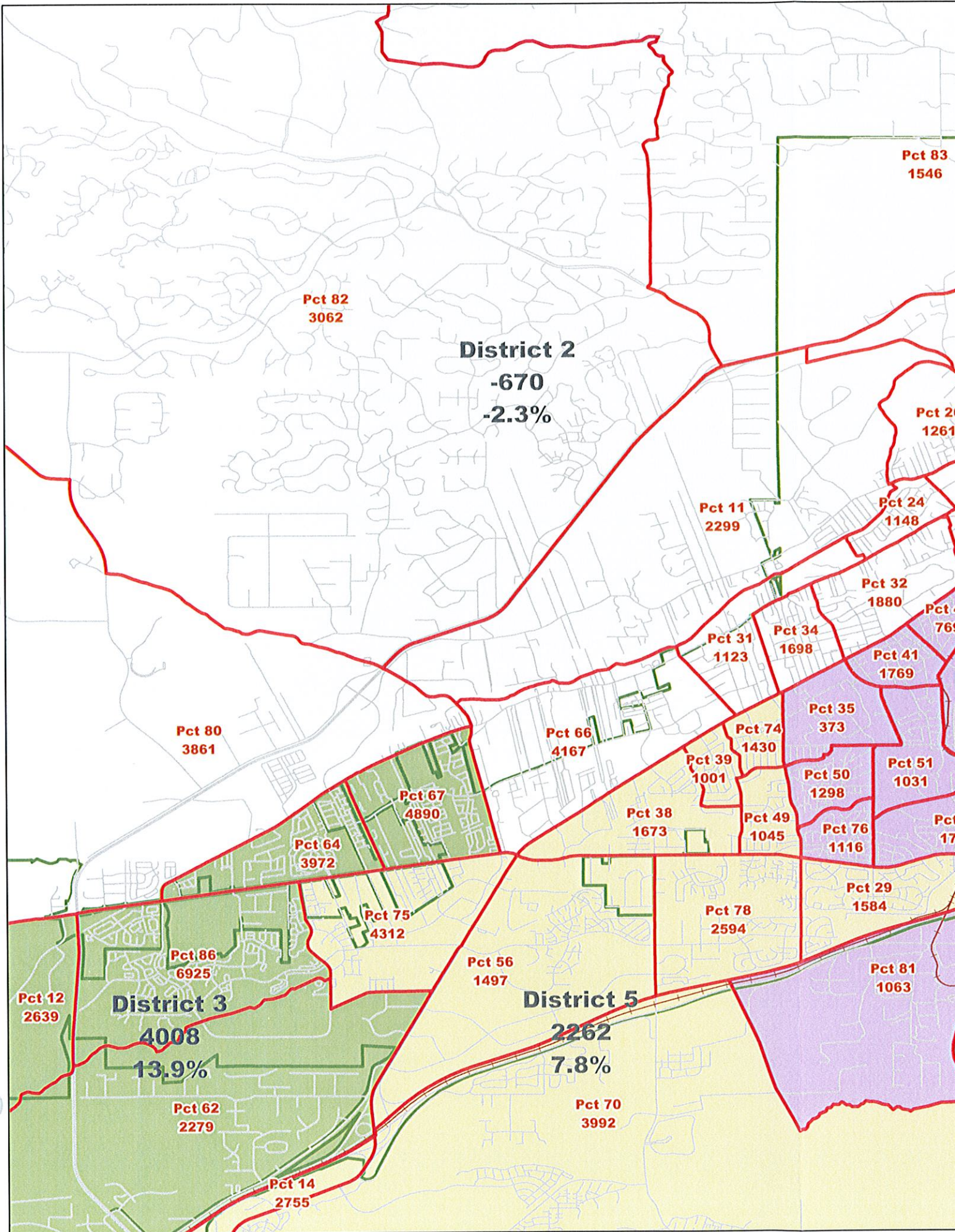
Legend

Current Commission Districts

Deviation from Ideal Population

- 2811 Below Ideal
- 2789 Below Ideal
- 670 Below Ideal
- 2262 Above Ideal
- 4008 Above Ideal
- 2011 Precinct Boundaries
- Incorporated Areas
- Railroads
- Roads





**THE BOARD OF COUNTY COMMISSIONERS
OF SANTA FE COUNTY, NEW MEXICO**

RESOLUTION NO. 2011-_____

**A RESOLUTION ESTABLISHING DROUGHT MITIGATION MEASURES IN THE
SANTA FE RIVER**

WHEREAS, Santa Fe County has been experiencing drought conditions, including above normal temperatures and little or no precipitation;

WHEREAS, numerous streams including the Santa Fe River have decreased water levels;

WHEREAS, the Santa Fe County, City of Santa Fe and BLM own property at upper La Cienega encompassing a segment of the Santa Fe River which conveys water that is released from the City of Santa Fe waste water treatment plant;

WHEREAS, colonies of beavers are now inhabiting the upper portions of the Santa Fe River, including properties owned by the City of Santa Fe, Santa Fe County, and the Bureau of Land Management, and are creating dams that may be obstructing the flow of water to downstream users;

WHEREAS, local media has reported that the beavers have found trees on those properties "delicious";

WHEREAS, the Community of La Bajada has received no water from the Santa Fe River for over a month, resulting in a hardship and impact on agricultural land use and the community water system;

WHEREAS, staff has researched the possibility of a beaver retriever but found a better alternate is to use a beaver deceiver;

WHEREAS, Santa Fe County is coordinating efforts with the City of Santa Fe and BLM to implement drought mitigation measures to enhance water flow in the Santa Fe River and to provide water to the residents of La Bajada; and

WHEREAS, it is otterly obvious that the Santa Fe River is being badgered by beavers and we need to do something, dam it.

NOW THEREFORE, IN LIEU OF A RIVER RESIDENT RELOCATION PROGRAM, THE BOARD OF COUNTY COMMISSIONERS OF SANTA FE COUNTY RESOLVES , AS FOLLOWS:

1. The County shall coordinate efforts with the City of Santa Fe to provide immediate drought relief assistance to the La Bajada community.
2. The County shall coordinate with the New Mexico Game and Fish Department, so that the Department can conduct an immediate assessment of the number of beaver dams in the area and begin a beaver deceiver (flow device) program to improve river flow across county property. This effort will involve collaboration between the Santa Fe County Open Space Program, the City of Santa Fe and BLM.
3. The County will coordinate efforts with the City of Santa Fe, BLM and New Mexico Game and Fish to improve flow across all properties upstream
4. The County shall collaborate with the City of Santa Fe and BLM to evaluate water conveyance system options for piping water back into the river at some point in the area by passing the beaver dams.
5. The County will create a working group to continue resolving the issues created by the Beaver dams. The working group may include representatives from Santa Fe County, the City of Santa Fe, BLM, NM Game and Fish, La Bajada community members, La Cienega community members, La Cieneguilla community members, Cochiti Pueblo, Office of the State Engineer, Army Corps of Engineers.

PASSED, APPROVED AND ADOPTED this ____ day of July, 2011.

**THE BOARD OF COUNTY COMMISSIONERS
OF SANTA FE COUNTY**

Virginia Vigil, Chair

ATTEST:

Valerie Espinoza, Santa Fe County Clerk

APPROVED AS TO FORM:

Stephen C. Ross, Santa Fe County Attorney