

BB2 345kV Transmission Line
Santa Fe County Submittal
 Attachment 2, Site Development Plan
 Sheet 4 of 21

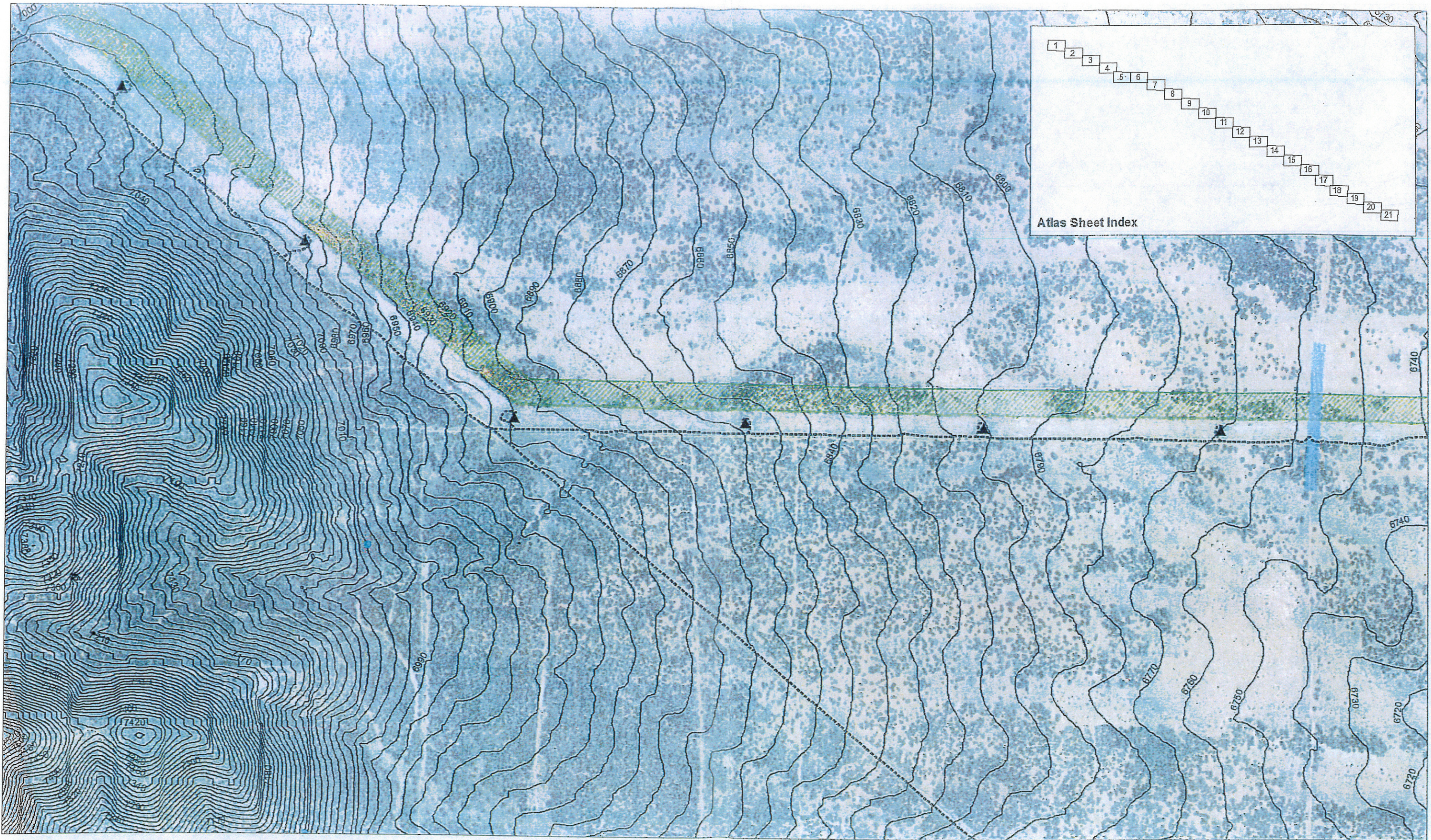
- BB2 Easement (150 feet)
- Water Well
- BB2 Access Roads
- Slope 0 - 15%
- Slope 15 - 30%
- Slope 30 - 50%
- Slope 50% +
- BB Structure (Existing)
- 2-Track
- Bladed dirt



Map Date: 4/10/2018
 Contour Interval: 10 feet
 Data Sources: Santa Fe County, NM Oil Conservation Division,
 NM State Engineer, PNM ESD, PNM DGIS, USGS, Esri

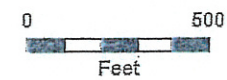


NBB-31



BB2 345kV Transmission Line
Santa Fe County Submittal
 Attachment 2, Site Development Plan
 Sheet 5 of 21

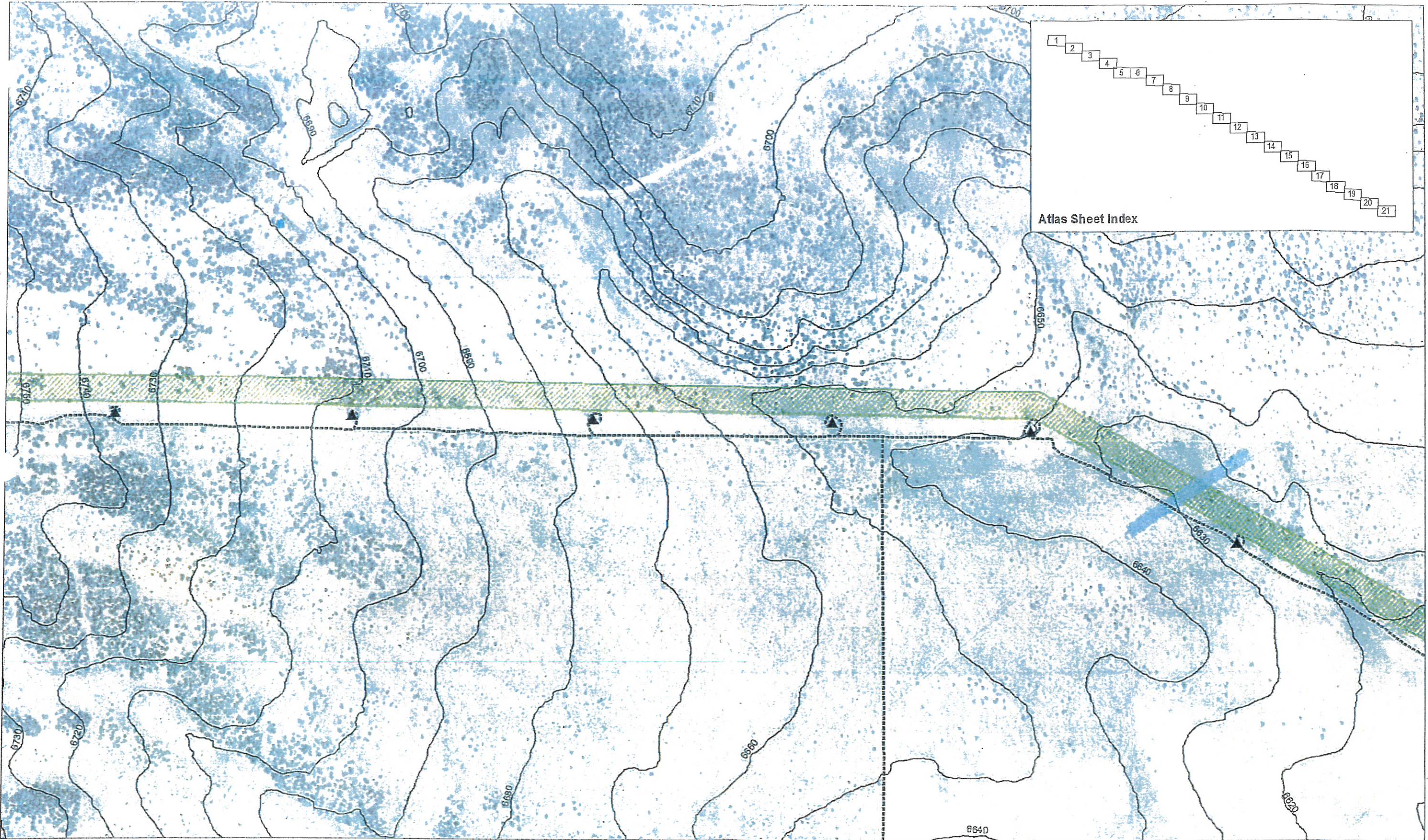
- BB2 Easement (150 feet)
- Water Well
- BB2 Access Roads
- Slope
- BB Structure (Existing)
- 2-Track
- Utility Crossing
- 0 - 15%
- 15 - 30%
- 30 - 50%
- 50% +



Map Date: 4/10/2018
 Contour Interval: 10 feet
 Data Sources: Santa Fe County, NM Oil Conservation-Division,
 NM State Engineer, PNM ESD, PNM DGIS, USGS, Esri



NBB-32



3B2 345kV Transmission Line
Santa Fe County Submittal
 Attachment 2, Site Development Plan
 Sheet 6 of 21

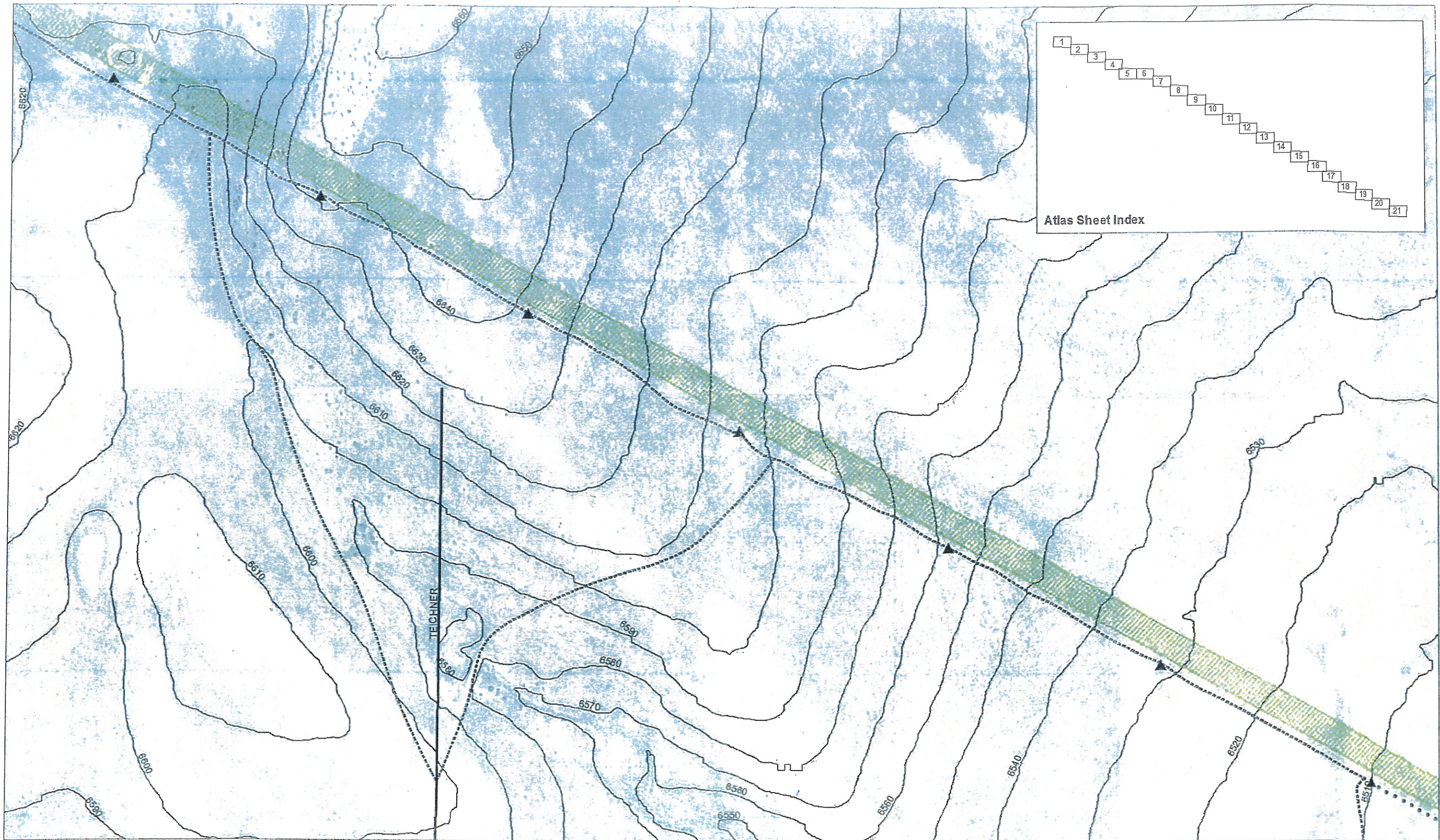
- BB2 Easement (150 feet)
- Water Well
- BB2 Access Roads
- Slope
- BB Structure (Existing)
- 2-Track
- Utility Crossing
- 0 - 15%
- 15 - 30%



Map Date: 4/10/2018
 Contour Interval: 10 feet
 Data Sources: Santa Fe County, NM Oil Conservation-Division,
 NM State Engineer, PNM ESD, PNM DGIS, USGS, Esri

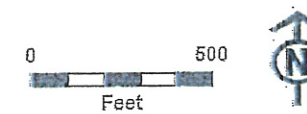


NBB-33



BB2 345kV Transmission Line
Santa Fe County Submittal
 Attachment 2, Site Development Plan
 Sheet 7 of 21

- | | | | |
|-------------------------|----------------------|------------------|--------------|
| BB2 Easement (150 feet) | SF County E911 Roads | BB2 Access Roads | Slope |
| BB Structure (Existing) | Other Road | 2-Track | 0 - 15% |
| | | Overlap | 15 - 30% |
| | | | 30 - 50% |



Map Date: 4/10/2018
 Contour Interval: 10 feet
 Data Sources: Santa Fe County, NM Oil Conservation-Division,
 NM State Engineer, PNM ESD, PNM DGIS, USGS, Esri



UBB-34