

SANTA FE COUNTY, NEW MEXICO
RESOLUTION 2000 - 135

1815553

**RESOLUTION GRANTING A SIX (6) MONTH EXTENSION OF THE FRANCHISE
WITH MICKLESON MEDIA INC. / ADELPHIA COMMUNICATIONS
CORPORATION TO OPERATE A CABLE SYSTEM IN THE AGUA FRIA, LA
CIENEGA, DINOSAUR TRAIL AND TURQUOISE TRAIL AREAS OF SANTA FE
COUNTY**

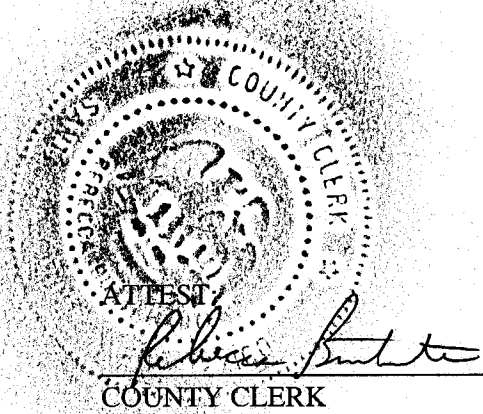
WHEREAS,

1. The Santa Fe County Board of County Commissioners ("BCC") has jurisdiction over Cable Systems pursuant to NMSA 1978, Sections 62-1-3 and 4-37-1, Santa Fe County Ordinance No. 2000 - 6 and Title 47, Chapter 5, Subchapter V-A, Part III of the U.S. Code; and
2. In order to provide cable television service within the County of Santa Fe, a Cable Service Company must be issued a Certificate and Acceptance of Franchise by the BCC after a public hearing, and the Cable Service Company must agree to reasonable terms imposed by the BCC; and
3. Mickleson Media Inc. ("MMI"), a wholly owned subsidiary of Adelphia Communications Corporation ("Adelphia"), currently owns and operates a cable system serving the Agua Fria, La Cienega, Dinosaur Trail and Turquoise trail areas of Santa Fe County, as designated on the map, attached hereto as Exhibit "A"; and
4. Pursuant to Ordinance 1982-5 and the County Land Development Code, the BCC granted a permit to MMI/Adelphia to operate and maintain a cable television system within the Agua Fria, La Cienega, Dinosaur Trail and Turquoise Trail areas of Santa Fe County (agreement dated July 12, 1984 between MMI and Santa Fe County) ; and
5. Pursuant to Resolution 1999-130, the BCC granted a 1-year extension, until October 12, 2000, of the franchise for MMI to operate a cable system in the Agua Fria, La Cienega, Dinosaur Trail and Turquoise Trail areas; and
6. MMI/Adelphia are in the process of negotiating a new franchise agreement with the County; and
7. The County and MMI/Adelphia desire to extend the term of the current franchise for an additional six (6) months to allow ample time to finalize the new franchise agreement.

NOW, THEREFORE, BE IT RESOLVED, that after a public hearing, the subject application is hereby granted and a Certificate and Acceptance of Franchise is hereby issued, subject to the following terms and conditions:

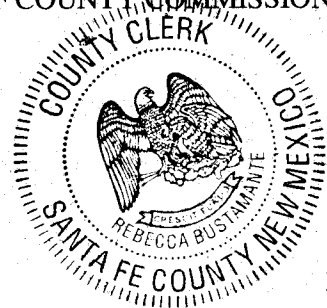
1. The Franchise area is defined by the attached maps, designated as Exhibit "A" and incorporated herein by reference.
2. The expiration of this Franchise shall be six (6) months years from the effective date, which shall be the date this Resolution is filed with the County Clerk.
3. Adelpia shall comply with the terms and conditions of Ordinance No. 2000-6, as amended or replaced, subject to applicable law, incorporated by reference.
4. Notice under this Franchise shall be given as follows:
 To County: as per Ordinance 2000-6
 To Company: Adelpia
 Tony Hotter
 1225 Diamond Drive
 Los Alamos, NM 87544

ADOPTED BY THE BOARD OF COUNTY COMMISSIONERS OF SANTA FE COUNTY, THIS 10th DAY OF October, 2010.



ATTEST
Rebecca Bustamante
 COUNTY CLERK

Richard D. Araya
 CHAIRPERSON,
 BOARD OF COUNTY COMMISSIONERS



COUNTY CLERK
 SANTA FE COUNTY NEW MEXICO
 REBECCA BUSTAMANTE

APPROVED AS TO LEGAL FORM AND SUFFICIENCY:
A. Kopf
 COUNTY ATTORNEY

COUNTY OF SANTA FE 1132 SS 341
 STATE OF NEW MEXICO
 I hereby certify that this instrument was filed
 for record on the 11 day of OCT A.D.
 20 00 at 2:41 o'clock pm
 and was duly recorded in book 1815
 page 55.3-556 of the records of
 Santa Fe County.

Witness my Hand and Seal of Office
 Rebecca Bustamante
 County Clerk, Santa Fe County, N.M.
Mirella Calzon
 Deputy

ACCEPTED BY:
ADELPHIA

1815555

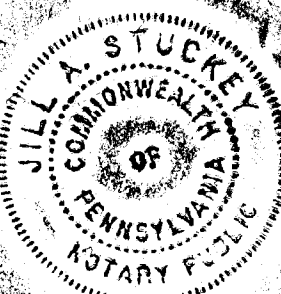
BY: Randall A. Fisher

ACKNOWLEDGMENT

The foregoing instrument was acknowledged before me on the 9th day of
October, 2000, by RANDY FISHER.

Jill A. Stuckey
Notary Public

My commission expires: May 10, 2004

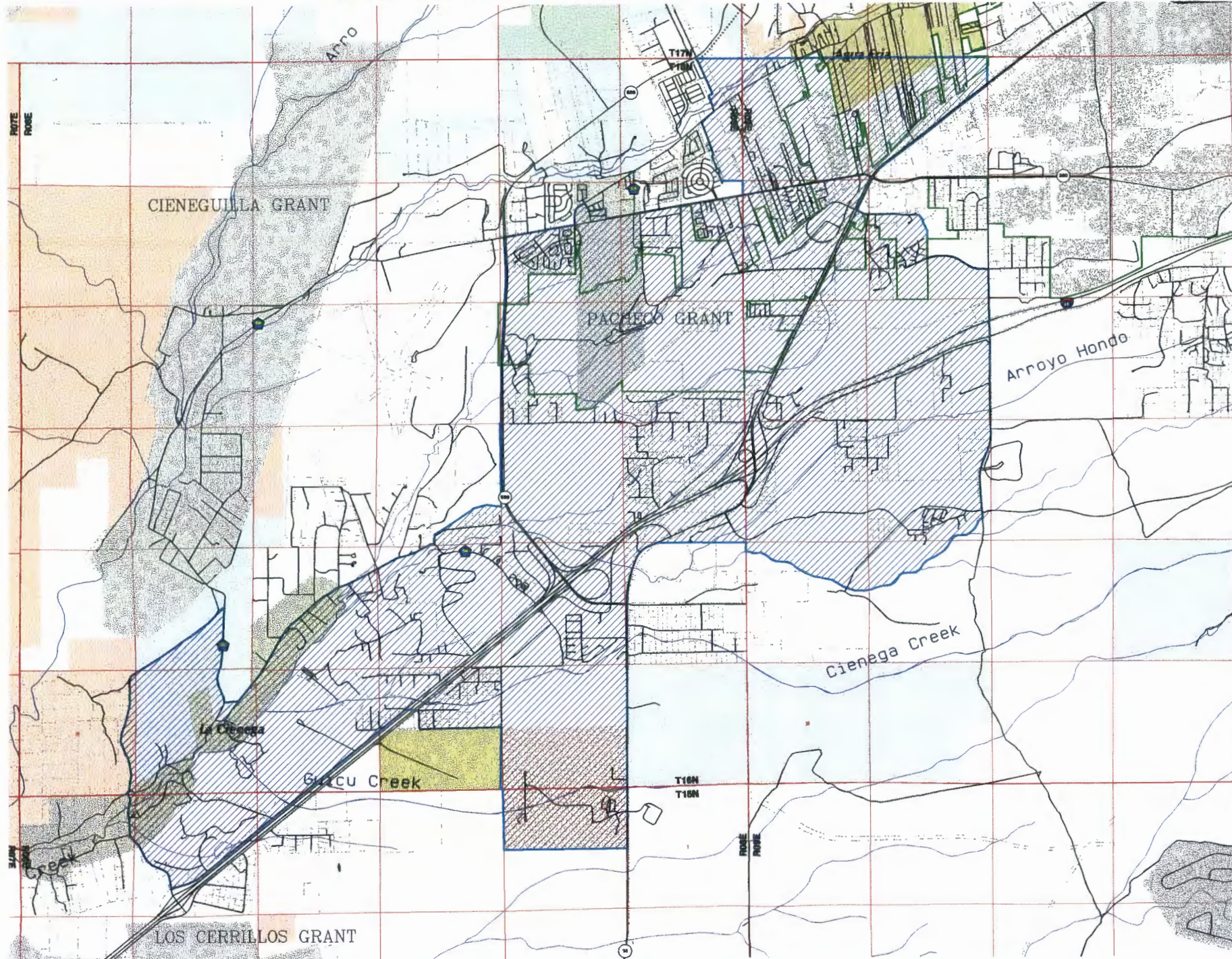


Notarial Seal
Jill A. Stuckey, Notary Public
Coudersport Boro, Potter County
My Commission Expires May 10, 2004
Member, Pennsylvania Association of Notaries

Mickelson Media/Adelphia Inc.

Franchise area within Santa Fe County

1815556

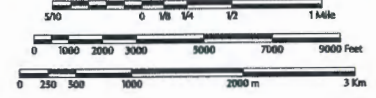


LEGEND

-  Franchise Boundary
-  Incorporated City Boundaries
-  GPS Road -DRAFT STATUS-
-  Major Streams and Arroyos
-  Minor Streams and Arroyos
-  BLM Land
-  State Land
-  City/County Recreation Area
-  State Penitentiary
-  NM National Guard
-  Traditional Communities (County Zoning Designation)
-  Traditional Historic Communities (State Statute Designation)



Scale 1:24,000
REDUCED COPY - NOT TO SCALE
 1 inch represents 2000 feet



This information is for reference only.
 Santa Fe County assumes no liability for errors associated with the use of these data.
 Users are solely responsible for confirming data accuracy when necessary.



September 03, 1998