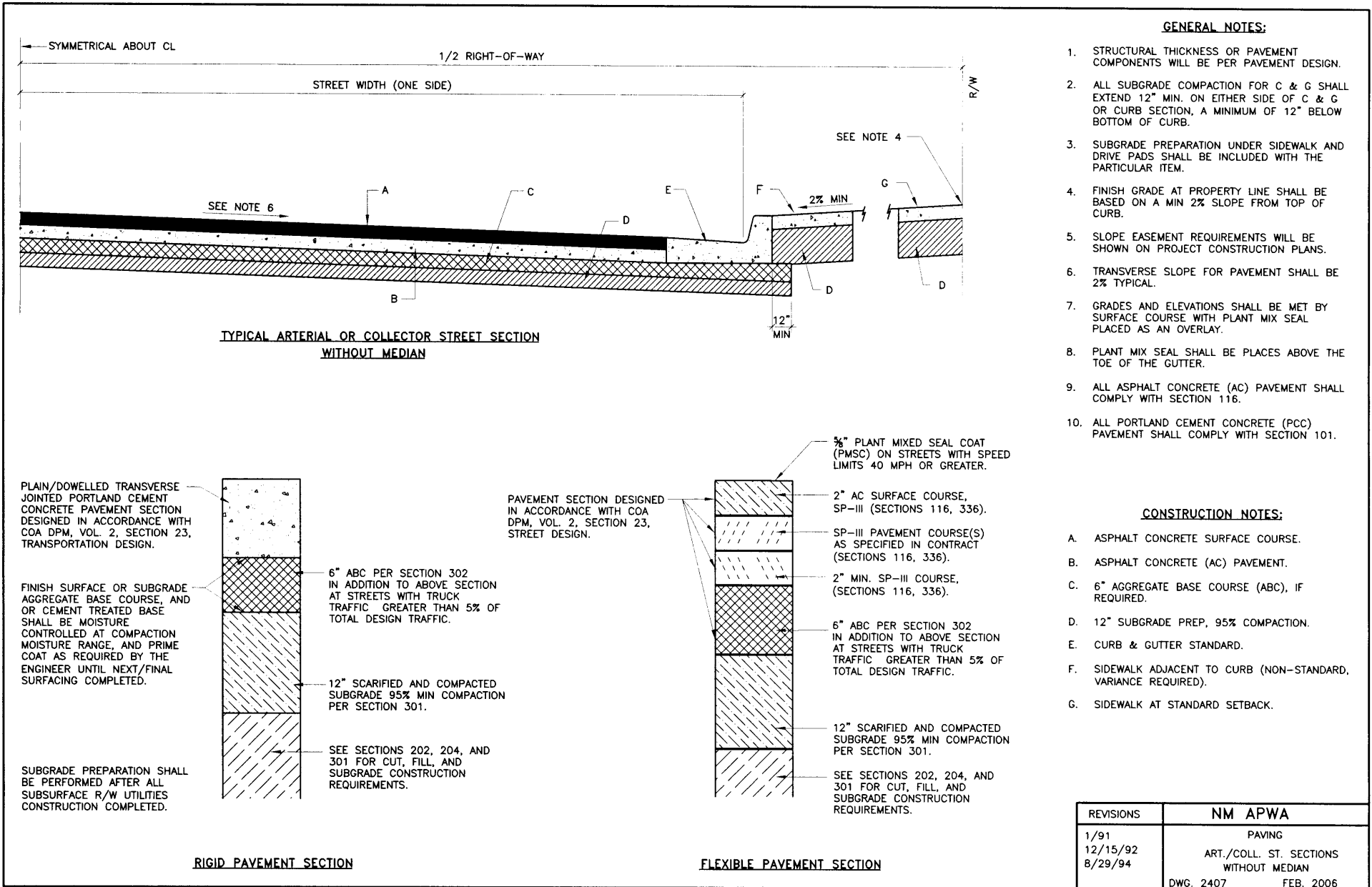


# Attachment C



**GENERAL NOTES:**

1. STRUCTURAL THICKNESS OR PAVEMENT COMPONENTS WILL BE PER PAVEMENT DESIGN.
2. ALL SUBGRADE COMPACTION FOR C & G SHALL EXTEND 12" MIN. ON EITHER SIDE OF C & G OR CURB SECTION. A MINIMUM OF 12" BELOW BOTTOM OF CURB.
3. SUBGRADE PREPARATION UNDER SIDEWALK AND DRIVE PADS SHALL BE INCLUDED WITH THE PARTICULAR ITEM.
4. FINISH GRADE AT PROPERTY LINE SHALL BE BASED ON A MIN 2% SLOPE FROM TOP OF CURB.
5. SLOPE EASEMENT REQUIREMENTS WILL BE SHOWN ON PROJECT CONSTRUCTION PLANS.
6. TRANSVERSE SLOPE FOR PAVEMENT SHALL BE 2% TYPICAL.
7. GRADES AND ELEVATIONS SHALL BE MET BY SURFACE COURSE WITH PLANT MIX SEAL PLACED AS AN OVERLAY.
8. PLANT MIX SEAL SHALL BE PLACED ABOVE THE TOE OF THE GUTTER.
9. ALL ASPHALT CONCRETE (AC) PAVEMENT SHALL COMPLY WITH SECTION 116.
10. ALL PORTLAND CEMENT CONCRETE (PCC) PAVEMENT SHALL COMPLY WITH SECTION 101.

**CONSTRUCTION NOTES:**

- A. ASPHALT CONCRETE SURFACE COURSE.
- B. ASPHALT CONCRETE (AC) PAVEMENT.
- C. 6" AGGREGATE BASE COURSE (ABC), IF REQUIRED.
- D. 12" SUBGRADE PREP, 95% COMPACTION.
- E. CURB & GUTTER STANDARD.
- F. SIDEWALK ADJACENT TO CURB (NON-STANDARD, VARIANCE REQUIRED).
- G. SIDEWALK AT STANDARD SETBACK.

REVISIONS	NM APWA
1/91	PAVING
12/15/92	ART./COLL. ST. SECTIONS
8/29/94	WITHOUT MEDIAN
	DWG. 2407 FEB. 2006