

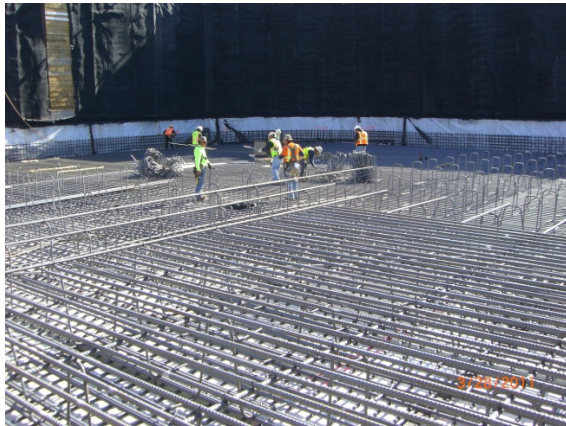
**JUDGE STEVE HERRERA JUDICIAL COMPLEX  
SANTA FE, NEW MEXICO**

Status for the Week of March 28, 2011

During the week of March 28, the following events took place. Rebar was installed for the top mat at the east half of the lower level basement. Rebar dowels for the perimeter walls were started. A total of 1.2 million pounds of steel has been placed for the mat slab. The west half of the lower basement is scheduled to start the end of April. Electrical conduit under the slab was placed and extends above the top mat. The plumbers installed the drains. The two sand/oil interceptors at the north end of the lower level were completed.

Schedule for the Week of April 4, 2011

The schedule for the week of April 4 will include the following events: The rebar dowels for the walls will continue. All inspections and corrections will be completed. The continuous concrete pour will occur Friday, April 8 starting at 10:00 p.m. and ending around 10:00 a.m. Saturday, April 9. During this time, 2,500 yards of concrete will be poured utilizing 350 concrete trucks and three pump trucks.



Upper mat rebar placement at east half of lower basement



Sand/Oil interceptor north of lower basement



Upper mat rebar placement at east half of lower basement



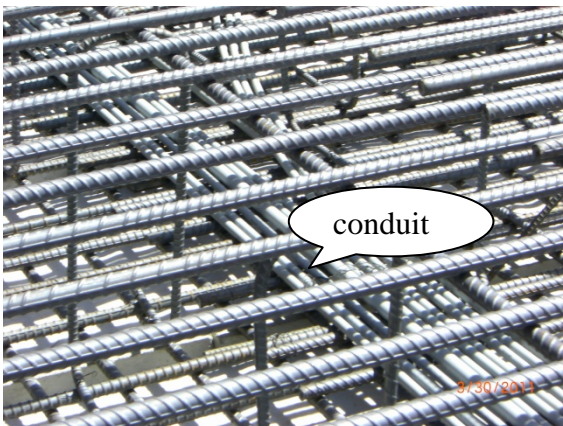
Sand/Oil interceptor north of lower basement



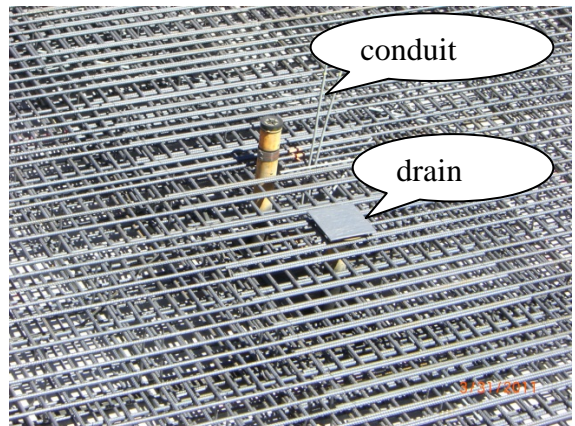
Rebar dowels for walls started at east half of lower basement



Close-up of rebar dowels for walls at east half of lower basement



Electrical conduit between rebar mats at east half of lower basement



Area drain and electrical conduit at east half of lower basement



This report was prepared by Sherry Keefe.

OWNER'S REPRESENTATIVE:

Gerald A. Martin, Ltd.

A handwritten signature in black ink that reads "Sherry Keefe". The signature is written in a cursive style with a large, prominent initial 'S'.

Sherry Keefe